

NPW (Y-12): sc-136767

BACKGROUND

NPW (neuropeptide W), also known as preproprotein L8 (PPL8) or PPNPW, is a 165 amino acid secreted protein that is cleaved into 2 chains: neuropeptide W-23 (also designated NPW23 or L8) and neuropeptide W-30 (also known as NPW30 or L8C). Both NPW neuropeptides activate G protein-coupled receptors in the central nervous system to enhance cortisol secretion. Highly expressed in lymphoblastic leukemia, colorectal adenocarcinoma, fetal kidney, trachea and substantia nigra, NPW is also found at low levels in placenta, ovary, testis and uterus. NPW functions in organization of neuroendocrine signals and is also thought to enhance food and water intake as well as stress responses. The gene encoding NPW maps to human chromosome 16p13.3.

REFERENCES

1. Shimomura, Y., et al. 2002. Identification of neuropeptide W as the endogenous ligand for orphan G protein-coupled receptors GPR7 and GPR8. *J. Biol. Chem.* 277: 35826-35832.
2. Mondal, M.S., et al. 2003. A role for neuropeptide W in the regulation of feeding behavior. *Endocrinology* 144: 4729-4733.
3. Brezillon, S., et al. 2003. Identification of natural ligands for the orphan G protein-coupled receptors GPR7 and GPR8. *J. Biol. Chem.* 278: 776-783.
4. Tanaka, H., et al. 2003. Characterization of a family of endogenous neuropeptide ligands for the G protein-coupled receptors GPR7 and GPR8. *Proc. Natl. Acad. Sci. USA* 100: 6251-6256.
5. Online Mendelian Inheritance in Man, OMIM[™]. 2005. Johns Hopkins University, Baltimore, MD. MIM Number: 607997. World Wide Web URL: <http://www.ncbi.nlm.nih.gov/omim/>
6. Mondal, M.S., et al. 2006. Neuropeptide W is present in antral G cells of rat, mouse, and human stomach. *J. Endocrinol.* 188: 49-57.
7. Luttrell, L.M. 2008. Reviews in molecular biology and biotechnology: transmembrane signaling by G protein-coupled receptors. *Mol. Biotechnol.* 39: 239-264.
8. Lambert, N.A. 2008. Dissociation of heterotrimeric G proteins in cells. *Sci. Signal.* 1: re5.

CHROMOSOMAL LOCATION

Genetic locus: NPW (human) mapping to 16p13.3; Npw (mouse) mapping to 17 A3.3.

SOURCE

NPW (Y-12) is an affinity purified goat polyclonal antibody raised against a peptide mapping within an internal region of NPW of human origin.

PRODUCT

Each vial contains 200 µg IgG in 1.0 ml of PBS with < 0.1% sodium azide and 0.1% gelatin.

Blocking peptide available for competition studies, sc-136767 P, (100 µg peptide in 0.5 ml PBS containing < 0.1% sodium azide and 0.2% BSA).

APPLICATIONS

NPW (Y-12) is recommended for detection of NPW of mouse, rat and human origin by Western Blotting (starting dilution 1:200, dilution range 1:100-1:1000), immunoprecipitation [1-2 µg per 100-500 µg of total protein (1 ml of cell lysate)], immunofluorescence (starting dilution 1:50, dilution range 1:50-1:500) and solid phase ELISA (starting dilution 1:30, dilution range 1:30-1:3000).

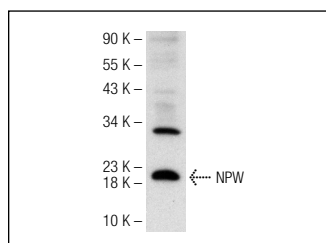
NPW (Y-12) is also recommended for detection of NPW in additional species, including porcine.

Suitable for use as control antibody for NPW siRNA (h): sc-93473, NPW siRNA (m): sc-150058, NPW shRNA Plasmid (h): sc-93473-SH, NPW shRNA Plasmid (m): sc-150058-SH, NPW shRNA (h) Lentiviral Particles: sc-93473-V and NPW shRNA (m) Lentiviral Particles: sc-150058-V.

Molecular Weight of NPW: 18 kDa.

Positive Controls: HeLa whole cell lysate: sc-2200.

DATA



NPW (Y-12): sc-136767. Western blot analysis of NPW expression in HeLa whole cell lysate.

STORAGE

Store at 4° C, ****DO NOT FREEZE****. Stable for one year from the date of shipment. Non-hazardous. No MSDS required.

RESEARCH USE

For research use only, not for use in diagnostic procedures.

PROTOCOLS

See our web site at www.scbt.com or our catalog for detailed protocols and support products.