

NT5C3L (N-12): sc-136771

BACKGROUND

Nucleotidases are hydrolytic enzymes that catalyze the hydrolysis of nucleotides into phosphates and nucleosides. NT5C3 (5'-nucleotidase, cytosolic III), also known as P5N1 or UMPH1, is a 336 amino acid protein that exists as multiple alternatively spliced isoforms which localize to either the cytoplasm or the endoplasmic reticulum. Expressed in an isoform-specific manner in lymphocytes and reticulocytes, NT5C3 belongs to the pyrimidine 5'-nucleotidase family and exists as a monomer which acts as both a nucleotidase and a phosphotransferase, effectively catalyzing the conversion of a 5'-ribonucleotide to a ribonucleoside and a free phosphate. NT5C3L (5'-nucleotidase, cytosolic III-like), also known as cN-III-like protein, is a 292 amino acid cytoplasmic protein belonging to the pyrimidine 5'-nucleotidase family that also functions as a nucleotidase and a phosphotransferase.

CHROMOSOMAL LOCATION

Genetic locus: NT5C3L (human) mapping to 17q21.2; Nt5c3l (mouse) mapping to 11 D.

SOURCE

NT5C3L (N-12) is an affinity purified goat polyclonal antibody raised against a peptide mapping near the N-terminus of NT5C3L of human origin.

PRODUCT

Each vial contains 200 µg IgG in 1.0 ml of PBS with < 0.1% sodium azide and 0.1% gelatin.

Blocking peptide available for competition studies, sc-136771 P, (100 µg peptide in 0.5 ml PBS containing < 0.1% sodium azide and 0.2% BSA).

STORAGE

Store at 4° C, ****DO NOT FREEZE****. Stable for one year from the date of shipment. Non-hazardous. No MSDS required.

APPLICATIONS

NT5C3L (N-12) is recommended for detection of NT5C3L of mouse, rat and human origin by Western Blotting (starting dilution 1:200, dilution range 1:100-1:1000), immunoprecipitation [1-2 µg per 100-500 µg of total protein (1 ml of cell lysate)], immunofluorescence (starting dilution 1:50, dilution range 1:50-1:500) and solid phase ELISA (starting dilution 1:30, dilution range 1:30-1:3000); non cross-reactive with NT5C3 family members.

NT5C3L (N-12) is also recommended for detection of NT5C3L in additional species, including canine and bovine.

Suitable for use as control antibody for NT5C3L siRNA (h): sc-93563, NT5C3L siRNA (m): sc-150082, NT5C3L shRNA Plasmid (h): sc-93563-SH, NT5C3L shRNA Plasmid (m): sc-150082-SH, NT5C3L shRNA (h) Lentiviral Particles: sc-93563-V and NT5C3L shRNA (m) Lentiviral Particles: sc-150082-V.

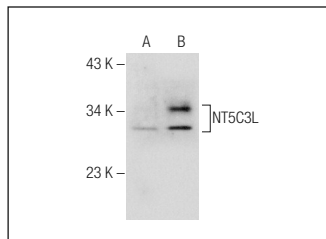
Molecular Weight of NT5C3L: 34 kDa.

Positive Controls: NT5C3L (h2): 293T Lysate: sc-113477 or human liver extract: sc-363766.

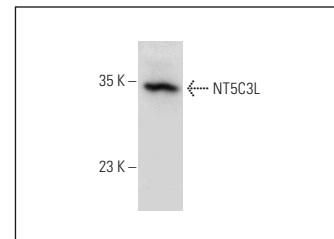
RECOMMENDED SECONDARY REAGENTS

To ensure optimal results, the following support (secondary) reagents are recommended: 1) Western Blotting: use donkey anti-goat IgG-HRP: sc-2020 (dilution range: 1:2000-1:100,000) or Cruz Marker™ compatible donkey anti-goat IgG-HRP: sc-2033 (dilution range: 1:2000-1:5000), Cruz Marker™ Molecular Weight Standards: sc-2035, TBS Blotto A Blocking Reagent: sc-2333 and Western Blotting Luminol Reagent: sc-2048. 2) Immunoprecipitation: use Protein A/G PLUS-Agarose: sc-2003 (0.5 ml agarose/2.0 ml). 3) Immunofluorescence: use donkey anti-goat IgG-FITC: sc-2024 (dilution range: 1:100-1:400) or donkey anti-goat IgG-TR: sc-2783 (dilution range: 1:100-1:400) with UltraCruz™ Mounting Medium: sc-24941.

DATA



NT5C3L (N-12): sc-136771. Western blot analysis of NT5C3L expression in non-transfected: sc-117752 (A) and human NT5C3L transfected: sc-113477 (B) 293T whole cell lysates.



NT5C3L (N-12): sc-136771. Western blot analysis of NT5C3L expression in human liver tissue extract.

RESEARCH USE

For research use only, not for use in diagnostic procedures.

PROTOCOLS

See our web site at www.scbt.com or our catalog for detailed protocols and support products.



Try **NT5C3L (A-9): sc-398604** or **NT5C3L (D-8): sc-514456**, our highly recommended monoclonal alternatives to NT5C3L (N-12).