

OTOP3 (Y-13): sc-136788

BACKGROUND

Otopettrins are multi-transmembrane domain proteins that share conserved gene and protein structure and are possibly involved in the formation of otoconia and otoliths. Located in the utricle and saccule of the inner ear, otoconia are complex calcium carbonate biominerals that are required for the normal sensation of gravity and linear acceleration. Vertigo and loss of balance may be attributed to degeneration or displacement of otoconia. The otopettrin family consists of three proteins, OTOP1, OTOP2 and OTOP3. These proteins have 12 putative transmembrane domains that are clustered into three otopettrin domains (OD-I, II and III). OTOP1 was the first described member of the otopettrin family. Mutations of OTOP1 leads to absence of otoconia or otoliths, though inner ear development is normal. OTOP2 and OTOP3 share significant structural similarity with OTOP1 and may also play a role in the formation of mineralized structures.

REFERENCES

1. Fermin, C.D., et al. 1998. Otoconia biogenesis, phylogeny, composition and functional attributes. *Histol. Histopathol.* 13: 1103-1154.
2. Thalmann, R., et al. 2001. Development and maintenance of otoconia: biochemical considerations. *Ann. N.Y. Acad. Sci.* 942: 162-178.
3. Hurler, B., et al. 2003. Non-syndromic vestibular disorder with otoconial agenesis in tilted/mergulhador mice caused by mutations in otopettrin 1. *Hum. Mol. Genet.* 12: 777-789.
4. Hughes, I., et al. 2004. Otopettrin 1 is required for otolith formation in the zebrafish *Danio rerio*. *Dev. Biol.* 276: 391-402.
5. Söllner, C., et al. 2004. Mutated otopettrin 1 affects the genesis of otoliths and the localization of Starmaker in zebrafish. *Dev. Genes Evol.* 214: 582-590.
6. Online Mendelian Inheritance in Man, OMIM™. 2005. Johns Hopkins University, Baltimore, MD. MIM Number: 607806. World Wide Web URL: <http://www.ncbi.nlm.nih.gov/omim/>

CHROMOSOMAL LOCATION

Genetic locus: OTOP3 (human) mapping to 17q25.1; Otop3 (mouse) mapping to 11 E2.

SOURCE

OTOP3 (Y-13) is an affinity purified goat polyclonal antibody raised against a peptide mapping near the C-terminus of OTOP3 of human origin.

PRODUCT

Each vial contains 200 µg IgG in 1.0 ml of PBS with < 0.1% sodium azide and 0.1% gelatin.

Blocking peptide available for competition studies, sc-136788 P, (100 µg peptide in 0.5 ml PBS containing < 0.1% sodium azide and 0.2% BSA).

STORAGE

Store at 4° C, ****DO NOT FREEZE****. Stable for one year from the date of shipment. Non-hazardous. No MSDS required.

APPLICATIONS

OTOP3 (Y-13) is recommended for detection of OTOP3 of mouse, rat and human origin by Western Blotting (starting dilution 1:200, dilution range 1:100-1:1000), immunoprecipitation [1-2 µg per 100-500 µg of total protein (1 ml of cell lysate)], immunofluorescence (starting dilution 1:50, dilution range 1:50-1:500) and solid phase ELISA (starting dilution 1:30, dilution range 1:30-1:3000); non cross-reactive with OTOP1 or OTOP2.

OTOP3 (Y-13) is also recommended for detection of OTOP3 in additional species, including canine, bovine and porcine.

Suitable for use as control antibody for OTOP3 siRNA (h): sc-94215, OTOP3 siRNA (m): sc-151346, OTOP3 shRNA Plasmid (h): sc-94215-SH, OTOP3 shRNA Plasmid (m): sc-151346-SH, OTOP3 shRNA (h) Lentiviral Particles: sc-94215-V and OTOP3 shRNA (m) Lentiviral Particles: sc-151346-V.

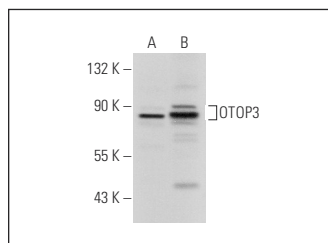
Molecular Weight of OTOP3: 66 kDa.

Positive Controls: NIH/3T3 whole cell lysate: sc-2210, K-562 whole cell lysate: sc-2203 or Jurkat whole cell lysate: sc-2204.

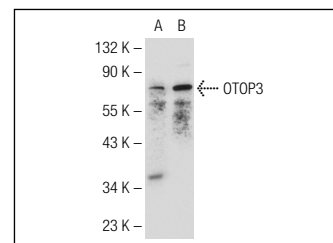
RECOMMENDED SECONDARY REAGENTS

To ensure optimal results, the following support (secondary) reagents are recommended: 1) Western Blotting: use donkey anti-goat IgG-HRP: sc-2020 (dilution range: 1:2000-1:100,000) or Cruz Marker™ compatible donkey anti-goat IgG-HRP: sc-2033 (dilution range: 1:2000-1:5000), Cruz Marker™ Molecular Weight Standards: sc-2035, TBS Blotto A Blocking Reagent: sc-2333 and Western Blotting Luminol Reagent: sc-2048. 2) Immunoprecipitation: use Protein A/G PLUS-Agarose: sc-2003 (0.5 ml agarose/2.0 ml). 3) Immunofluorescence: use donkey anti-goat IgG-FITC: sc-2024 (dilution range: 1:100-1:400) or donkey anti-goat IgG-TR: sc-2783 (dilution range: 1:100-1:400) with UltraCruz™ Mounting Medium: sc-24941.

DATA



OTOP3 (Y-13): sc-136788. Western blot analysis of OTOP3 expression in NIH/3T3 (A) and K-562 (B) whole cell lysates.



OTOP3 (Y-13): sc-136788. Western blot analysis of OTOP3 expression in HeLa (A) and Jurkat (B) whole cell lysates.

RESEARCH USE

For research use only, not for use in diagnostic procedures.

PROTOCOLS

See our web site at www.scbt.com or our catalog for detailed protocols and support products.