

SLC10A6 (M-14): sc-136877

BACKGROUND

The SLC10 family of sodium/bile salt cotransporters contains over 50 members in animal, plant and bacterial species. SLC10A6 (solute carrier family 10, member 6), also known as SOAT (sodium-dependent organic anion transporter), is a 373 amino acid multi-pass membrane protein belonging to the sodium:bile acid symporter family. Highly expressed in testis, placenta and pancreas, SLC10A6 transports sulfoconjugated steroid hormones, as well as taurothiocholic acid-3-sulfate and sulfoconjugated pyrenes in a sodium-dependent manner. SLC10A6 plays an important role in the cellular delivery of specific prohormones in testis, placenta, adrenal gland and other peripheral tissues. SLC10A6 has nine transmembrane domains, with an N-terminus outside the cell and an intracellular C-terminus.

REFERENCES

- Geyer, J., Godoy, J.R. and Petzinger, E. 2004. Identification of a sodium-dependent organic anion transporter from rat adrenal gland. *Biochem. Biophys. Res. Commun.* 316: 300-306.
- Hagenbuch, B. and Dawson, P. 2004. The sodium bile salt cotransport family SLC10. *Pflugers Arch.* 447: 566-570.
- Geyer, J., Wilke, T. and Petzinger, E. 2006. The solute carrier family SLC10: more than a family of bile acid transporters regarding function and phylogenetic relationships. *Naunyn Schmiedeberg's Arch. Pharmacol.* 372: 413-431.
- Fernandes, C.F., Godoy, J.R., Döring, B., Cavalcanti, M.C., Bergmann, M., Petzinger, E. and Geyer, J. 2007. The novel putative bile acid transporter SLC10A5 is highly expressed in liver and kidney. *Biochem. Biophys. Res. Commun.* 361: 26-32.
- Godoy, J.R., Fernandes, C., Döring, B., Beuerlein, K., Petzinger, E. and Geyer, J. 2007. Molecular and phylogenetic characterization of a novel putative membrane transporter (SLC10A7), conserved in vertebrates and bacteria. *Eur. J. Cell Biol.* 86: 445-460.
- Geyer, J., Döring, B., Meerkamp, K., Ugele, B., Bakhiya, N., Fernandes, C.F., Godoy, J.R., Glatt, H. and Petzinger, E. 2007. Cloning and functional characterization of human sodium-dependent organic anion transporter (SLC10A6). *J. Biol. Chem.* 282: 19728-19741.
- Geyer, J., Fernandes, C.F., Döring, B., Burger, S., Godoy, J.R., Rafalzik, S., Hübschle, T., Gerstberger, R. and Petzinger, E. 2008. Cloning and molecular characterization of the orphan carrier protein SLC10A4: expression in cholinergic neurons of the rat central nervous system. *Neuroscience* 152: 990-1005.
- Zheng, Y., Cai, X., Luo, X., Hu, Z. and Jing, Z. 2008. Characterization of a new gene (SLC10) with a spliced leader from *Taenia solium*. *Vet. J.* 175: 96-101.

CHROMOSOMAL LOCATION

Genetic locus: Slc10a6 (mouse) mapping to 5 E5.

STORAGE

Store at 4° C, ****DO NOT FREEZE****. Stable for one year from the date of shipment. Non-hazardous. No MSDS required.

SOURCE

SLC10A6 (M-14) is an affinity purified rabbit polyclonal antibody raised against a peptide mapping within a C-terminal cytoplasmic domain of SLC10A6 of mouse origin.

PRODUCT

Each vial contains 100 µg IgG in 1.0 ml of PBS with < 0.1% sodium azide and 0.1% gelatin.

Blocking peptide available for competition studies, sc-136877 P, (100 µg peptide in 0.5 ml PBS containing < 0.1% sodium azide and 0.2% BSA).

APPLICATIONS

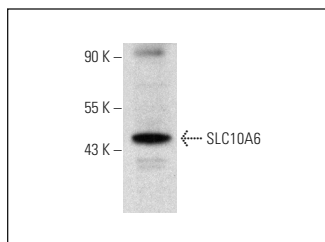
SLC10A6 (M-14) is recommended for detection of SLC10A6 of mouse and rat origin by Western Blotting (starting dilution 1:100, dilution range 1:50-1:500), immunoprecipitation [1-2 µg per 100-500 µg of total protein (1 ml of cell lysate)], immunofluorescence (starting dilution 1:25, dilution range 1:25-1:250) and solid phase ELISA (starting dilution 1:30, dilution range 1:30-1:3000); non cross-reactive with other SLC10A family members.

Suitable for use as control antibody for SLC10A6 siRNA (m): sc-153487, SLC10A6 shRNA Plasmid (m): sc-153487-SH and SLC10A6 shRNA (m) Lentiviral Particles: sc-153487-V.

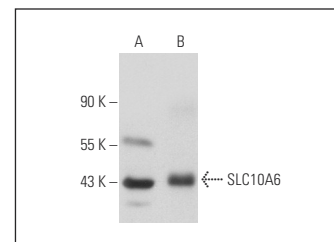
Molecular Weight of SLC10A6: 42 kDa.

Positive Controls: Rat pancreas extract: sc-364806, mouse testis extract: sc-2405 or mouse pancreas extract: sc-364247.

DATA



SLC10A6 (M-14): sc-136877. Western blot analysis of SLC10A6 expression in rat pancreas tissue extract.



SLC10A6 (M-14): sc-136877. Western blot analysis of SLC10A6 expression in mouse placenta (A) and mouse testis (B) tissue extracts.

RESEARCH USE

For research use only, not for use in diagnostic procedures.

PROTOCOLS

See our web site at www.scbt.com or our catalog for detailed protocols and support products.