

# GRB2 (H-9): sc-137056

## BACKGROUND

The superfamily of GTP binding proteins, of which Ras proteins are prototypes, has been implicated in a broad range of biological activities. A family of guanine nucleotide releasing factors (GRFs) activate Ras in mammalian cells and growth factor receptor-bound protein 2 (GRB2), an adaptor protein (also referred to as Sem 5) that appears to mediate the interaction of GRFs with activated receptor molecules. GRB2 forms a complex with activated EGFR (epidermal growth factor receptor) and the Ras-specific guanine nucleotide exchange factor SOS1, and, together, they regulate the growth factor-induced activation of Ras. GRB2 exhibits both structural and functional homology to the *C. elegans* protein sem-5. GRB2 is necessary during embryogenesis for the differentiation of endodermal cells and formation of the epiblast.

## REFERENCES

1. Lowenstein, E.J., et al. 1992. The SH2 and SH3 domain-containing protein GRB2 links receptor tyrosine kinases to Ras signaling. *Cell* 40: 431-442.
2. Chardin, P., et al. 1993. Human Sos 1: a guanine nucleotide exchange factor for Ras that binds to GRB2. *Science* 260: 1338-1343.
3. Skolnik, E.Y., et al. 1993. The function of GRB2 in linking the Insulin receptor to Ras signaling pathways. *Science* 260: 1953-1955.

## CHROMOSOMAL LOCATION

Genetic locus: GRB2 (human) mapping to 17q25.1; Grb2 (mouse) mapping to 11 E2.

## SOURCE

GRB2 (H-9) is a mouse monoclonal antibody raised against amino acids 1-68 mapping at the N-terminus of GRB2 of human origin.

## PRODUCT

Each vial contains 200 µg IgG<sub>1</sub> kappa light chain in 1.0 ml of PBS with < 0.1% sodium azide and 0.1% gelatin.

## APPLICATIONS

GRB2 (H-9) is recommended for detection of GRB2 of mouse, rat and human origin by Western Blotting (starting dilution 1:100, dilution range 1:100-1:1000), immunoprecipitation [1-2 µg per 100-500 µg of total protein (1 ml of cell lysate)], immunofluorescence (starting dilution 1:50, dilution range 1:50-1:500), immunohistochemistry (including paraffin-embedded sections) (starting dilution 1:50, dilution range 1:50-1:500) and solid phase ELISA (starting dilution 1:30, dilution range 1:30-1:3000).

Suitable for use as control antibody for GRB2 siRNA (h): sc-29334, GRB2 siRNA (m): sc-29335, GRB2 shRNA Plasmid (h): sc-29334-SH, GRB2 shRNA Plasmid (m): sc-29335-SH, GRB2 shRNA (h) Lentiviral Particles: sc-29334-V and GRB2 shRNA (m) Lentiviral Particles: sc-29335-V.

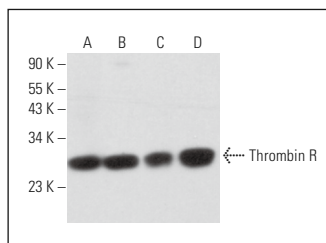
Molecular Weight of GRB2: 25-31 kDa.

Positive Controls: Ramos cell lysate: sc-2216, KNRK whole cell lysate: sc-2214 or RAW 264.7 whole cell lysate: sc-2211.

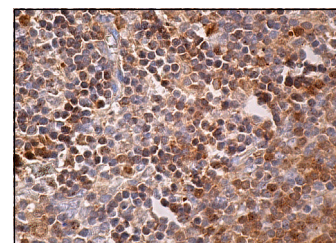
## RECOMMENDED SUPPORT REAGENTS

To ensure optimal results, the following support reagents are recommended: 1) Western Blotting: use m-IgGκ BP-HRP: sc-516102 or m-IgGκ BP-HRP (Cruz Marker): sc-516102-CM (dilution range: 1:1000-1:10000), Cruz Marker™ Molecular Weight Standards: sc-2035, UltraCruz® Blocking Reagent: sc-516214 and Western Blotting Luminol Reagent: sc-2048. 2) Immunoprecipitation: use Protein A/G PLUS-Agarose: sc-2003 (0.5 ml agarose/2.0 ml). 3) Immunofluorescence: use m-IgGκ BP-FITC: sc-516140 or m-IgGκ BP-PE: sc-516141 (dilution range: 1:50-1:200) with UltraCruz® Mounting Medium: sc-24941 or UltraCruz® Hard-set Mounting Medium: sc-359850. 4) Immunohistochemistry: use m-IgGκ BP-HRP: sc-516102 with DAB, 50X: sc-24982 and Immunohistomount: sc-45086, or Organo/Limonene Mount: sc-45087.

## DATA



GRB2 (H-9): sc-137056. Western blot analysis of GRB2 expression in KNRK (A), Ramos (B), J774.A1 (C) and RAW 264.7 (D) whole cell lysates.



GRB2 (H-9): sc-137056. Immunoperoxidase staining of formalin fixed, paraffin-embedded human lymph node tissue showing cytoplasmic and nuclear staining of cells in germinal and non-germinal centers.

## SELECT PRODUCT CITATIONS

1. Liu, R., et al. 2011. Generating DNA synbodies from previously discovered peptides. *Chembiochem* 12: 1813-1817.

## STORAGE

Store at 4° C, \*\*DO NOT FREEZE\*\*. Stable for one year from the date of shipment. Non-hazardous. No MSDS required.

## RESEARCH USE

For research use only, not for use in diagnostic procedures.

## PROTOCOLS

See our web site at [www.scbt.com](http://www.scbt.com) for detailed protocols and support products.



See **GRB2 (C-7): sc-8034** for GRB2 antibody conjugates, including AC, HRP, FITC, PE, and Alexa Fluor® 488, 546, 594, 647, 680 and 790.