

Phocein (C-4): sc-137228

BACKGROUND

Phocein (preimplantation protein 3, Mps1 binder kinase activator-like 3, 2C4D) is a 225 amino acid protein encoded by the human gene MOBKL3. Phocein belongs to the MOB1/Phocein family and is phosphorylated on serine residues. Phocein is a widely expressed, highly conserved intracellular protein. The sequence of Phocein has limited homology to the σ subunits from clathrin adaptor complexes and contains an additional stretch bearing a putative SH3-binding domain. Phocein is usually associated with membranes but can be present in the cytosol, where it behaves as a protein complex. Phocein is the major partner of the striatin family members, which are scaffolding proteins involved in signaling and trafficking. Due to its association with Dynamin via direct interactions with nucleotide diphosphate kinase (NDPK) and Eps15, Phocein has been implicated in vesicular trafficking, acting in particular in the endocytic process.

REFERENCES

1. Baillat, G., et al. 2001. Molecular cloning and characterization of Phocein, a protein found from the Golgi complex to dendritic spines. *Mol. Biol. Cell* 12: 663-673.
2. Moreno, C.S., et al. 2001. A mammalian homolog of yeast MOB1 is both a member and a putative substrate of striatin family-protein phosphatase 2A complexes. *J. Biol. Chem.* 276: 24253-24260.

CHROMOSOMAL LOCATION

Genetic locus: MOBKL3 (human) mapping to 2q33.1; Mobkl3 (mouse) mapping to 1 C1.2.

SOURCE

Phocein (C-4) is a mouse monoclonal antibody raised against amino acids 1-225 representing full length Phocein of human origin.

PRODUCT

Each vial contains 200 μ g IgG_{2a} kappa light chain in 1.0 ml of PBS with < 0.1% sodium azide and 0.1% gelatin.

APPLICATIONS

Phocein (C-4) is recommended for detection of Phocein of mouse, rat and human origin by Western Blotting (starting dilution 1:100, dilution range 1:100-1:1000), immunoprecipitation [1-2 μ g per 100-500 μ g of total protein (1 ml of cell lysate)], immunofluorescence (starting dilution 1:50, dilution range 1:50-1:500) and solid phase ELISA (starting dilution 1:30, dilution range 1:30-1:3000).

Suitable for use as control antibody for Phocein siRNA (h): sc-76123, Phocein siRNA (m): sc-76124, Phocein shRNA Plasmid (h): sc-76123-SH, Phocein shRNA Plasmid (m): sc-76124-SH, Phocein shRNA (h) Lentiviral Particles: sc-76123-V and Phocein shRNA (m) Lentiviral Particles: sc-76124-V.

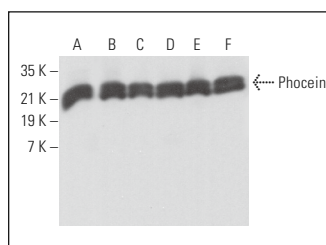
Molecular Weight of Phocein: 26 kDa.

Positive Controls: JAR cell lysate: sc-2276, PC-12 cell lysate: sc-2250 or NIH/3T3 whole cell lysate: sc-2210.

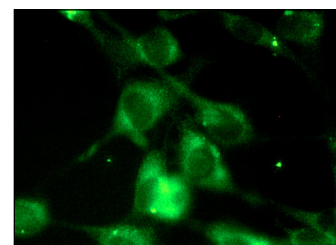
RECOMMENDED SUPPORT REAGENTS

To ensure optimal results, the following support reagents are recommended: 1) Western Blotting: use m-IgG κ BP-HRP: sc-516102 or m-IgG κ BP-HRP (Cruz Marker): sc-516102-CM (dilution range: 1:1000-1:10000), Cruz Marker™ Molecular Weight Standards: sc-2035, UltraCruz® Blocking Reagent: sc-516214 and Western Blotting Luminol Reagent: sc-2048. 2) Immunoprecipitation: use Protein A/G PLUS-Agarose: sc-2003 (0.5 ml agarose/2.0 ml). 3) Immunofluorescence: use m-IgG κ BP-FITC: sc-516140 or m-IgG κ BP-PE: sc-516141 (dilution range: 1:50-1:200) with UltraCruz® Mounting Medium: sc-24941 or UltraCruz® Hard-set Mounting Medium: sc-359850.

DATA



Phocein (C-4): sc-137228. Western blot analysis of Phocein expression in JAR (A), PC-12 (B), NIH/3T3 (C), T24 (D), F9 (E) and AT3B-1 (F) whole cell lysates.



Phocein (C-4): sc-137228. Immunofluorescence staining of methanol-fixed NIH/3T3 cells showing cytoplasmic localization.

SELECT PRODUCT CITATIONS

1. Chen, Y.K., et al. 2012. CTTNBP2, but not CTTNBP2NL, regulates dendritic spinogenesis and synaptic distribution of the striatin-PP2A complex. *Mol. Biol. Cell* 23: 4383-4392.
2. Shih, P.Y., et al. 2020. CTTNBP2 controls synaptic expression of zinc-related autism-associated proteins and regulates synapse formation and autism-like behaviors. *Cell Rep.* 31: 107700.
3. Seo, G., et al. 2023. The Hippo pathway noncanonically drives autophagy and cell survival in response to energy stress. *Mol. Cell* 83: 3155-3170.e8.

STORAGE

Store at 4° C, **DO NOT FREEZE**. Stable for one year from the date of shipment. Non-hazardous. No MSDS required.

RESEARCH USE

For research use only, not for use in diagnostic procedures.

PROTOCOLS

See our web site at www.scbt.com for detailed protocols and support products.