

ACTL8 (C-18): sc-137276

BACKGROUND

ACTL8 (actin-like protein 8), also known as CT57 (cancer/testis antigen 57), is a member of the ARP family of actin-related proteins that contain an actin fold and are involved in spindle orientation, nuclear migration and chromatin remodeling events. Localized to the cytoplasm and expressed in the testis and pancreas, ACTL8 is 366 amino acids in length and is encoded by a gene that maps to human chromosome 1, which spans 260 million base pairs, contains over 3,000 genes and comprises nearly 8% of the human genome. Chromosome 1 houses a large number of disease-associated genes, including those that are involved in familial adenomatous polyposis, Stickler syndrome, Parkinson's disease, Gaucher disease, schizophrenia and Usher syndrome. Aberrations in chromosome 1 are found in a variety of cancers, including head and neck cancer, malignant melanoma and multiple myeloma.

REFERENCES

- Blackwood, D.H., Fordyce, A., Walker, M.T., St. Clair, D.M., Porteous, D.J. and Muir, W.J. 2001. Schizophrenia and affective disorders—cosegregation with a translocation at chromosome 1q42 that directly disrupts brain-expressed genes: clinical and P300 findings in a family. *Am. J. Hum. Genet.* 69: 428-433.
- Weise, A., Starke, H., Mrasek, K., Claussen, U. and Liehr, T. 2005. New insights into the evolution of chromosome 1. *Cytogenet. Genome Res.* 108: 217-222.
- Chen, Y.T., Scanlan, M.J., Venditti, C.A., Chua, R., Theiler, G., Stevenson, B.J., Iseli, C., Gure, A.O., Vasicek, T., Strausberg, R.L., Jongeneel, C.V., Old, L.J. and Simpson, A.J. 2005. Identification of cancer/testis-antigen genes by massively parallel signature sequencing. *Proc. Natl. Acad. Sci. USA* 102: 7940-7945.
- Marzin, Y., Jamet, D., Douet-Guilbert, N., Morel, F., Le Bris, M.J., Morice, P., Abgrall, J.F., Berthou, C. and De Braekeleer, M. 2006. Chromosome 1 abnormalities in multiple myeloma. *Anticancer Res.* 26: 953-959.
- Gregory, S.G., Barlow, K.F., McLay, K.E., Kaul, R., Swarbreck, D., Dunham, A., Scott, C.E., Howe, K.L., Woodfine, K., Spencer, C.C., Jones, M.C., Gillson, C., Searle, S., Zhou, Y., et al. 2006. The DNA sequence and biological annotation of human chromosome 1. *Nature* 441: 315-321.

CHROMOSOMAL LOCATION

Genetic locus: ACTL8 (human) mapping to 1p36.13.

SOURCE

ACTL8 (C-18) is an affinity purified goat polyclonal antibody raised against a peptide mapping at the C-terminus of ACTL8 of human origin.

STORAGE

Store at 4° C, ****DO NOT FREEZE****. Stable for one year from the date of shipment. Non-hazardous. No MSDS required.

PROTOCOLS

See our web site at www.scbt.com or our catalog for detailed protocols and support products.

PRODUCT

Each vial contains 200 µg IgG in 1.0 ml of PBS with < 0.1% sodium azide and 0.1% gelatin.

Blocking peptide available for competition studies, sc-137276 P, (100 µg peptide in 0.5 ml PBS containing < 0.1% sodium azide and 0.2% BSA).

APPLICATIONS

ACTL8 (C-18) is recommended for detection of ACTL8 of human origin by Western Blotting (starting dilution 1:200, dilution range 1:100-1:1000), immunoprecipitation [1-2 µg per 100-500 µg of total protein (1 ml of cell lysate)], immunofluorescence (starting dilution 1:50, dilution range 1:50-1:500) and solid phase ELISA (starting dilution 1:30, dilution range 1:30-1:3000); non cross-reactive with ACTL7A or ACTL7B.

Suitable for use as control antibody for ACTL8 siRNA (h): sc-88512, ACTL8 shRNA Plasmid (h): sc-88512-SH and ACTL8 shRNA (h) Lentiviral Particles: sc-88512-V.

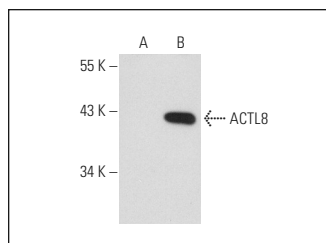
Molecular Weight of ACTL8: 41 kDa.

Positive Controls: ACTL8 (h): 293T Lysate: sc-113876.

RECOMMENDED SECONDARY REAGENTS

To ensure optimal results, the following support (secondary) reagents are recommended: 1) Western Blotting: use donkey anti-goat IgG-HRP: sc-2020 (dilution range: 1:2000-1:100,000) or Cruz Marker™ compatible donkey anti-goat IgG-HRP: sc-2033 (dilution range: 1:2000-1:5000), Cruz Marker™ Molecular Weight Standards: sc-2035, TBS Blotto A Blocking Reagent: sc-2333 and Western Blotting Luminol Reagent: sc-2048. 2) Immunoprecipitation: use Protein A/G PLUS-Agarose: sc-2003 (0.5 ml agarose/2.0 ml). 3) Immunofluorescence: use donkey anti-goat IgG-FITC: sc-2024 (dilution range: 1:100-1:400) or donkey anti-goat IgG-TR: sc-2783 (dilution range: 1:100-1:400) with UltraCruz™ Mounting Medium: sc-24941.

DATA



ACTL8 (C-18): sc-137276. Western blot analysis of ACTL8 expression in non-transfected: sc-117752 (A) and human ACTL8 transfected: sc-113876 (B) 293T whole cell lysates.

RESEARCH USE

For research use only, not for use in diagnostic procedures.