

C17orf66 (P-14): sc-137331

BACKGROUND

C17orf66 (chromosome 17 open reading frame 66) is a 570 amino acid protein that is encoded by a gene mapping to human chromosome 17. Chromosome 17 makes up over 2.5% of the human genome with about 81 million bases encoding over 1,200 genes. Two key tumor suppressor genes are associated with chromosome 17, namely, p53 and BRCA1. Tumor suppressor p53 is necessary for maintenance of cellular genetic integrity by moderating cell fate through DNA repair versus cell death. Malfunction or loss of p53 expression is associated with malignant cell growth and Li-Fraumeni syndrome. Like p53, BRCA1 is directly involved in DNA repair, though specifically it is recognized as a genetic determinant of early onset breast cancer and predisposition to cancers of the ovary, colon, prostate gland and fallopian tubes. Chromosome 17 is also linked to neurofibromatosis, a condition characterized by neural and epidermal lesions, and dysregulated Schwann cell growth. Alexander disease, Birt-Hogg-Dube syndrome and Canavan disease are also associated with chromosome 17.

REFERENCES

1. Welsch, M.J., et al. 2005. Birt-Hogg-Dube syndrome. *Int. J. Dermatol.* 44: 668-673.
2. Nusbaum, R., et al. 2006-2007. Susceptibility to breast cancer: hereditary syndromes and low penetrance genes. *Breast Dis.* 27: 21-50.
3. Al-Dirbashi, O.Y., et al. 2007. Quantification of N-acetylaspartic acid in urine by LC-MS/MS for the diagnosis of Canavan disease. *J. Inher. Metab. Dis.* 30: 612.
4. Dann, R.B., et al. 2007. Strategies for ovarian cancer prevention. *Obstet. Gynecol. Clin. North Am.* 34: 667-686.
5. Farrell, C.J. and Plotkin, S.R. 2007. Genetic causes of brain tumors: neurofibromatosis, tuberous sclerosis, von Hippel-Lindau, and other syndromes. *Neurol. Clin.* 25: 925-946.
6. Suela, J., et al. 2007. Neurofibromatosis 1, and not TP53, seems to be the main target of chromosome 17 deletions in *de novo* acute myeloid leukemia. *J. Clin. Oncol.* 25: 1151-1152.
7. Tai, Y.C., et al. 2007. Breast cancer risk among male BRCA1 and BRCA2 mutation carriers. *J. Natl. Cancer Inst.* 99: 1811-1814.
8. Yan, J., et al. 2007. Blimp-1 regulates cell growth through repression of p53 transcription. *Proc. Natl. Acad. Sci. USA* 104: 1841-1846.

CHROMOSOMAL LOCATION

Genetic locus: C17orf66 (human) mapping to 17q12.

SOURCE

C17orf66 (P-14) is an affinity purified rabbit polyclonal antibody raised against a peptide mapping within an internal region of C17orf66 of human origin.

STORAGE

Store at 4° C, ****DO NOT FREEZE****. Stable for one year from the date of shipment. Non-hazardous. No MSDS required.

PRODUCT

Each vial contains 100 µg IgG in 1.0 ml of PBS with < 0.1% sodium azide and 0.1% gelatin.

Blocking peptide available for competition studies, sc-137331 P, (100 µg peptide in 0.5 ml PBS containing < 0.1% sodium azide and 0.2% BSA).

APPLICATIONS

C17orf66 (P-14) is recommended for detection of C17orf66 of human origin by Western Blotting (starting dilution 1:100, dilution range 1:50-1:500), immunoprecipitation [1-2 µg per 100-500 µg of total protein (1 ml of cell lysate)], immunofluorescence (starting dilution 1:25, dilution range 1:25-1:250) and solid phase ELISA (starting dilution 1:30, dilution range 1:30-1:3000); non cross-reactive with other C17orf family members.

C17orf66 (P-14) is also recommended for detection of C17orf66 in additional species, including equine and canine.

Suitable for use as control antibody for C17orf66 siRNA (h): sc-93960, C17orf66 shRNA Plasmid (h): sc-93960-SH and C17orf66 shRNA (h) Lentiviral Particles: sc-93960-V.

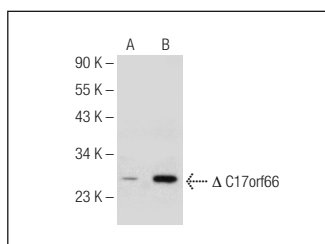
Molecular Weight of C17orf66: 66 kDa.

Positive Controls: C17orf66 (h): 293T Lysate: sc-115059.

RECOMMENDED SECONDARY REAGENTS

To ensure optimal results, the following support (secondary) reagents are recommended: 1) Western Blotting: use goat anti-rabbit IgG-HRP: sc-2004 (dilution range: 1:2000-1:100,000) or Cruz Marker™ compatible goat anti-rabbit IgG-HRP: sc-2030 (dilution range: 1:2000-1:5000), Cruz Marker™ Molecular Weight Standards: sc-2035, TBS Blotto A Blocking Reagent: sc-2333 and Western Blotting Luminol Reagent: sc-2048. 2) Immunoprecipitation: use Protein A/G PLUS-Agarose: sc-2003 (0.5 ml agarose/2.0 ml). 3) Immunofluorescence: use goat anti-rabbit IgG-FITC: sc-2012 (dilution range: 1:100-1:400) or goat anti-rabbit IgG-TR: sc-2780 (dilution range: 1:100-1:400) with UltraCruz™ Mounting Medium: sc-24941.

DATA



C17orf66 (P-14): sc-137331. Western blot analysis of C17orf66 expression in non-transfected: sc-117752 (A) and truncated human C17orf66 transfected: sc-115059 (B) 293T whole cell lysates.

RESEARCH USE

For research use only, not for use in diagnostic procedures.