

DCBLD1 (N-15): sc-137420

BACKGROUND

DCBLD1 (discoidin, CUB and LCCL domain containing 1) is a 715 amino acid single-pass membrane protein that contains one CUB domain, one F5/8 type C domain and one LCCL domain. The gene encoding DCBLD1 maps to chromosome 6, which contains 170 million base pairs and comprises nearly 6% of the human genome. Deletion of a portion of the q arm of chromosome 6 is associated with early onset intestinal cancer, suggesting the presence of a cancer susceptibility locus. Additionally, Porphyria cutanea tarda, Parkinson's disease, Stickler syndrome and a susceptibility to bipolar disorder are all associated with genes that map to chromosome 6.

REFERENCES

- Mungall, A.J., et al. 2003. The DNA sequence and analysis of human chromosome 6. *Nature* 425: 805-811.
- Vuoristo, M.M., et al. 2004. A stop codon mutation in COL11A2 induces exon skipping and leads to non-ocular Stickler syndrome. *Am. J. Med. Genet. A* 130: 160-164.
- McQueen, M.B., et al. 2005. Combined analysis from eleven linkage studies of bipolar disorder provides strong evidence of susceptibility loci on chromosomes 6q and 8q. *Am. J. Hum. Genet.* 77: 582-595.
- Batts, K.P. 2007. Iron overload syndromes and the liver. *Mod. Pathol.* 20: S31-S39.
- Olsson, K.S., et al. 2007. The HLA-A1-B8 haplotype hitchhiking with the hemochromatosis mutation: does it affect the phenotype? *Eur. J. Haematol.* 79: 429-434.
- Park, E., et al. 2007. Modulation of parkin gene expression in noradrenergic neuronal cells. *Int. J. Dev. Neurosci.* 25: 491-497.
- Safadi, S.S., et al. 2007. A disease state mutation unfolds the parkin ubiquitin-like domain. *Biochemistry* 46: 14162-14169.
- Bläker, H., et al. 2008. Recurrent deletions at 6q in early age of onset non-HNPCC- and non-FAP-associated intestinal carcinomas. Evidence for a novel cancer susceptibility locus at 6q14-q22. *Genes Chromosomes Cancer* 47: 159-164.

CHROMOSOMAL LOCATION

Genetic locus: DCBLD1 (human) mapping to 6q22.1; Dcbld1 (mouse) mapping to 10 B3.

SOURCE

DCBLD1 (N-15) is an affinity purified rabbit polyclonal antibody raised against a peptide mapping within an N-terminal extracellular domain of DCBLD1 of human origin.

PRODUCT

Each vial contains 100 µg IgG in 1.0 ml of PBS with < 0.1% sodium azide and 0.1% gelatin.

Blocking peptide available for competition studies, sc-137420 P, (100 µg peptide in 0.5 ml PBS containing < 0.1% sodium azide and 0.2% BSA).

APPLICATIONS

DCBLD1 (N-15) is recommended for detection of DCBLD1 of mouse, rat and human origin by Western Blotting (starting dilution 1:100, dilution range 1:50-1:500), immunoprecipitation [1-2 µg per 100-500 µg of total protein (1 ml of cell lysate)], immunofluorescence (starting dilution 1:25, dilution range 1:25-1:250) and solid phase ELISA (starting dilution 1:30, dilution range 1:30-1:3000).

DCBLD1 (N-15) is also recommended for detection of DCBLD1 in additional species, including equine, canine and porcine.

Suitable for use as control antibody for DCBLD1 siRNA (h): sc-95284, DCBLD1 siRNA (m): sc-142893, DCBLD1 shRNA Plasmid (h): sc-95284-SH, DCBLD1 shRNA Plasmid (m): sc-142893-SH, DCBLD1 shRNA (h) Lentiviral Particles: sc-95284-V and DCBLD1 shRNA (m) Lentiviral Particles: sc-142893-V.

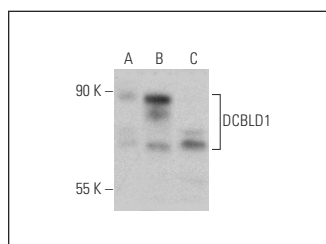
Molecular Weight of DCBLD1: 78 kDa.

Positive Controls: DCBLD1 (h): 293T Lysate: sc-115389 or U-251-MG whole cell lysate: sc-364176.

RECOMMENDED SECONDARY REAGENTS

To ensure optimal results, the following support (secondary) reagents are recommended: 1) Western Blotting: use goat anti-rabbit IgG-HRP: sc-2004 (dilution range: 1:2000-1:100,000) or Cruz Marker™ compatible goat anti-rabbit IgG-HRP: sc-2030 (dilution range: 1:2000-1:5000), Cruz Marker™ Molecular Weight Standards: sc-2035, TBS Blotto A Blocking Reagent: sc-2333 and Western Blotting Luminol Reagent: sc-2048. 2) Immunoprecipitation: use Protein A/G PLUS-Agarose: sc-2003 (0.5 ml agarose/2.0 ml). 3) Immunofluorescence: use goat anti-rabbit IgG-FITC: sc-2012 (dilution range: 1:100-1:400) or goat anti-rabbit IgG-TR: sc-2780 (dilution range: 1:100-1:400) with UltraCruz™ Mounting Medium: sc-24941.

DATA



DCBLD1 (N-15): sc-137420. Western blot analysis of DCBLD1 expression in non-transfected 293T: sc-117752 (A), human DCBLD1 transfected 293T: sc-115389 (B) and U-251-MG (C) whole cell lysates.

STORAGE

Store at 4° C, **DO NOT FREEZE**. Stable for one year from the date of shipment. Non-hazardous. No MSDS required.

RESEARCH USE

For research use only, not for use in diagnostic procedures.