

EGFLAM (N-17): sc-137453

BACKGROUND

EGFLAM (EGF-like, fibronectin type III and laminin G domains), also known as Pikachurin or Agrin-like protein (AGRINL), is a 1,017 amino acid secreted protein containing 3 EGF-like domains, 2 fibronectin type-III domains and 3 laminin G-like domains. Co-localizing with bassoon, CtBP and dystroglycan in photoreceptor synaptic terminals, EGFLAM is involved in retinal photoreceptor ribbon synapse formation. EGFLAM may also promote matrix assembly and cell adhesion. Existing as five alternatively spliced isoforms, the gene encoding EGFLAM maps to human chromosome 5p13.2. Chromosome 5 makes up approximately 6% of the human genome and contains 181 million base pairs, which encode 1,000 genes. Cockayne syndrome, Treacher Collins syndrome, acute myelogenous leukemias and myelodysplastic syndrome are associated with genes present on chromosome 5.

REFERENCES

- Dixon, M.J., et al. 1991. The gene for Treacher Collins syndrome maps to the long arm of chromosome 5. *Am. J. Hum. Genet.* 49: 17-22.
- Saltman, D.L., et al. 1993. A physical map of 15 loci on human chromosome 5q23-q33 by two-color fluorescence *in situ* hybridization. *Genomics* 16: 726-732.
- Kadmon, M., et al. 2001. Duodenal adenomatosis in familial adenomatous polyposis coli. A review of the literature and results from the Heidelberg Polyposis Register. *Int. J. Colorectal. Dis.* 16: 63-75.
- Marklund, L., et al. 2006. Adult-onset autosomal dominant leukodystrophy with autonomic symptoms restricted to 1.5 Mbp on chromosome 5q23. *Am. J. Med. Genet. B Neuropsychiatr. Genet.* 141B: 608-614.
- Makrantonaki, E., et al. 2007. Molecular mechanisms of skin aging: state of the art. *Ann. N.Y. Acad. Sci.* 1119: 40-50.
- Herry, A., et al. 2007. Redefining monosomy 5 by molecular cytogenetics in 23 patients with MDS/AML. *Eur. J. Haematol.* 78: 457-467.
- Aretz, S., et al. 2007. Somatic APC mosaicism: a frequent cause of familial adenomatous polyposis (FAP). *Hum. Mutat.* 28: 985-992.
- Cleaver, J.E., et al. 2007. Cockayne syndrome exhibits dysregulation of p21 and other gene products that may be independent of transcription-coupled repair. *Neuroscience* 145: 1300-1308.
- Mullighan, C.G., et al. 2008. Genomic analysis of the clonal origins of relapsed acute lymphoblastic leukemia. *Science* 322: 1377-1380.

CHROMOSOMAL LOCATION

Genetic locus: EGFLAM (human) mapping to 5p13.2.

SOURCE

EGFLAM (N-17) is an affinity purified goat polyclonal antibody raised against a peptide mapping near the N-terminus of EGFLAM of human origin.

STORAGE

Store at 4° C, ****DO NOT FREEZE****. Stable for one year from the date of shipment. Non-hazardous. No MSDS required.

PRODUCT

Each vial contains 200 µg IgG in 1.0 ml of PBS with < 0.1% sodium azide and 0.1% gelatin.

Blocking peptide available for competition studies, sc-137453 P, (100 µg peptide in 0.5 ml PBS containing < 0.1% sodium azide and 0.2% BSA).

APPLICATIONS

EGFLAM (N-17) is recommended for detection of EGFLAM of human origin by Western Blotting (starting dilution 1:200, dilution range 1:100-1:1000), immunoprecipitation [1-2 µg per 100-500 µg of total protein (1 ml of cell lysate)], immunofluorescence (starting dilution 1:50, dilution range 1:50-1:500) and solid phase ELISA (starting dilution 1:30, dilution range 1:30-1:3000).

Suitable for use as control antibody for EGFLAM siRNA (h): sc-91774, EGFLAM shRNA Plasmid (h): sc-91774-SH and EGFLAM shRNA (h) Lentiviral Particles: sc-91774-V.

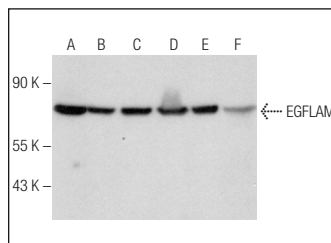
Molecular Weight of EGFLAM isoforms 1/2/3/4/5: 111/110/41/85/17 kDa.

Positive Controls: PC-3 cell lysate: sc-2220, Caki-1 cell lysate: sc-2224 or LNCaP cell lysate: sc-2231.

RECOMMENDED SECONDARY REAGENTS

To ensure optimal results, the following support (secondary) reagents are recommended: 1) Western Blotting: use donkey anti-goat IgG-HRP: sc-2020 (dilution range: 1:2000-1:100,000) or Cruz Marker™ compatible donkey anti-goat IgG-HRP: sc-2033 (dilution range: 1:2000-1:5000), Cruz Marker™ Molecular Weight Standards: sc-2035, TBS Blotto A Blocking Reagent: sc-2333 and Western Blotting Luminol Reagent: sc-2048. 2) Immunoprecipitation: use Protein A/G PLUS-Agarose: sc-2003 (0.5 ml agarose/2.0 ml). 3) Immunofluorescence: use donkey anti-goat IgG-FITC: sc-2024 (dilution range: 1:100-1:400) or donkey anti-goat IgG-TR: sc-2783 (dilution range: 1:100-1:400) with UltraCruz™ Mounting Medium: sc-24941.

DATA



EGFLAM (N-17): sc-137453. Western blot analysis of EGFLAM expression in JEG-3 (A), PC-3 (B), Caki-1 (C), LNCaP (D) and DU 145 (E) whole cell lysates and human prostate tissue extract (F).

RESEARCH USE

For research use only, not for use in diagnostic procedures.