

KRCC1 (G-13): sc-137554

BACKGROUND

KRCC1 (lysine-rich coiled-coil 1), also known as CHBP2 (cryptogenic hepatitis-binding protein 2), is a 259 amino acid protein that is encoded by a gene located on human chromosome 2p11.2. Consisting of 237 million bases, chromosome 2 is the second largest human chromosome and encodes over 1,400 genes. A number of genetic diseases are linked to genes on chromosome 2. Harlequin ichthyosis, a rare and morbid skin deformity, is associated with mutations in the ABCA12 gene. The lipid metabolic disorder sitosterolemia is associated with ABCG5 and ABCG8. An extremely rare recessive genetic disorder, Alström syndrome, is due to mutations in the ALMS1 gene. Interestingly, chromosome 2 contains what appears to be a vestigial second centromere and vestigial telomeres which gives credence to the hypothesis that human chromosome 2 is the result of an ancient fusion of two ancestral chromosomes seen in modern form today in apes.

REFERENCES

- Baldini, A., et al. 1993. An alphoid DNA sequence conserved in all human and great ape chromosomes: evidence for ancient centromeric sequences at human chromosomal regions 2q21 and 9q13. *Hum. Genet.* 90: 577-583.
- Patel, S.B., et al. 1998. Mapping a gene involved in regulating dietary cholesterol absorption. The sitosterolemia locus is found at chromosome 2p21. *J. Clin. Invest.* 102: 1041-1044.
- Zumsteg, U., et al. 2000. Alstrom syndrome: confirmation of linkage to chromosome 2p12-13 and phenotypic heterogeneity in three affected sibs. *J. Med. Genet.* 37: E8.
- Shulenin, S., et al. 2001. An ATP-binding cassette gene (ABCG5) from the ABCG (White) gene subfamily maps to human chromosome 2p21 in the region of the Sitosterolemia locus. *Cytogenet. Cell Genet.* 92: 204-208.
- Hearn, T., et al. 2002. Mutation of ALMS1, a large gene with a tandem repeat encoding 47 amino acids, causes Alström syndrome. *Nat. Genet.* 31: 79-83.
- Kelsell, D.P., et al. 2005. Mutations in ABCA12 underlie the severe congenital skin disease harlequin ichthyosis. *Am. J. Hum. Genet.* 76: 794-803.
- Horvath, J.E., et al. 2005. Punctuated duplication seeding events during the evolution of human chromosome 2p11. *Genome Res.* 15: 914-927.
- Johnson, A.D., et al. 2009. Genome-wide association meta-analysis for total serum bilirubin levels. *Hum. Mol. Genet.* 18: 2700-2710.

CHROMOSOMAL LOCATION

Genetic locus: KRCC1 (human) mapping to 2p11.2.

SOURCE

KRCC1 (G-13) is an affinity purified rabbit polyclonal antibody raised against a peptide mapping near the N-terminus of KRCC1 of human origin.

STORAGE

Store at 4° C, ****DO NOT FREEZE****. Stable for one year from the date of shipment. Non-hazardous. No MSDS required.

PRODUCT

Each vial contains 100 µg IgG in 1.0 ml of PBS with < 0.1% sodium azide and 0.1% gelatin.

Blocking peptide available for competition studies, sc-137554 P, (100 µg peptide in 0.5 ml PBS containing < 0.1% sodium azide and 0.2% BSA).

APPLICATIONS

KRCC1 (G-13) is recommended for detection of KRCC1 of human origin by Western Blotting (starting dilution 1:100, dilution range 1:50-1:500), immunoprecipitation [1-2 µg per 100-500 µg of total protein (1 ml of cell lysate)], immunofluorescence (starting dilution 1:25, dilution range 1:25-1:250) and solid phase ELISA (starting dilution 1:30, dilution range 1:30-1:3000).

Suitable for use as control antibody for KRCC1 siRNA (h): sc-94882, KRCC1 shRNA Plasmid (h): sc-94882-SH and KRCC1 shRNA (h) Lentiviral Particles: sc-94882-V.

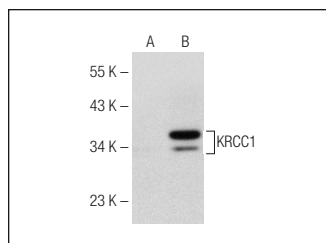
Molecular Weight of KRCC1: 31 kDa.

Positive Controls: KRCC1 (h): 293T Lysate: sc-111870.

RECOMMENDED SECONDARY REAGENTS

To ensure optimal results, the following support (secondary) reagents are recommended: 1) Western Blotting: use goat anti-rabbit IgG-HRP: sc-2004 (dilution range: 1:2000-1:100,000) or Cruz Marker™ compatible goat anti-rabbit IgG-HRP: sc-2030 (dilution range: 1:2000-1:5000), Cruz Marker™ Molecular Weight Standards: sc-2035, TBS Blotto A Blocking Reagent: sc-2333 and Western Blotting Luminol Reagent: sc-2048. 2) Immunoprecipitation: use Protein A/G PLUS-Agarose: sc-2003 (0.5 ml agarose/2.0 ml). 3) Immunofluorescence: use goat anti-rabbit IgG-FITC: sc-2012 (dilution range: 1:100-1:400) or goat anti-rabbit IgG-TR: sc-2780 (dilution range: 1:100-1:400) with UltraCruz™ Mounting Medium: sc-24941.

DATA



KRCC1 (G-13): sc-137554. Western blot analysis of KRCC1 expression in non-transfected: sc-117752 (A) and human KRCC1 transfected: sc-111870 (B) 293T whole cell lysates.

RESEARCH USE

For research use only, not for use in diagnostic procedures.