

GRO γ (C-15): sc-1376

BACKGROUND

Chemokines are members of a superfamily of small, inducible, secreted, pro-inflammatory cytokines. Members of the chemokine family exhibit 20% to 50% homology in their predicted amino acid sequences and are divided into four subfamilies. In the C-X-C or α subfamily, the first two of four cysteine motifs are separated by another amino acid residue. The C-X-C chemokine subfamily includes IL-8, GRO α / β / γ (and the murine homologs KC, MIP-2 α and MIP-2 β), platelet basic protein, ENA-78, GCP-2, PF4, IP-10 (and its murine homolog, CRG) and MIG. GRO α , β and γ (growth-related oncogene α / β / γ) are C-X-C chemokines important for the regulation of cell motility and growth. They function as neutrophil chemoattractants and mediators of angiogenesis. The GRO proteins may play a role in melanocyte progression to malignant melanoma.

REFERENCES

1. Oppenheim, J.J., et al. 1991. Properties of the novel proinflammatory supergene "intercrine" cytokine family. *Annu. Rev. Immunol.* 9: 617-648.
2. Schall, T.J. 1991. Biology of the RANTES/SIS cytokine family. *Cytokine* 3: 165-183.

CHROMOSOMAL LOCATION

Genetic locus: CXCL3 (human) mapping to 4q13.3.

SOURCE

GRO γ (C-15) is an affinity purified goat polyclonal antibody raised against a peptide mapping at the C-terminus of GRO γ of human origin.

PRODUCT

Each vial contains 200 μ g IgG in 1.0 ml of PBS with < 0.1% sodium azide and 0.1% gelatin.

Blocking peptide available for competition studies, sc-1376 P, (100 μ g peptide in 0.5 ml PBS containing < 0.1% sodium azide and 0.2% BSA).

STORAGE

Store at 4° C, **DO NOT FREEZE**. Stable for one year from the date of shipment. Non-hazardous. No MSDS required.

APPLICATIONS

GRO γ (C-15) is recommended for detection of GRO γ of human origin by Western Blotting (starting dilution 1:200, dilution range 1:100-1:1000), immunoprecipitation [1-2 μ g per 100-500 μ g of total protein (1 ml of cell lysate)], immunofluorescence (starting dilution 1:50, dilution range 1:50-1:500) and solid phase ELISA (starting dilution 1:30, dilution range 1:30-1:3000).

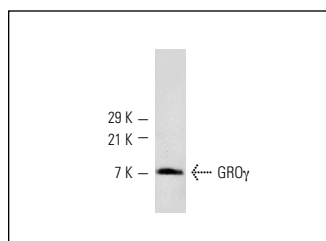
Suitable for use as control antibody for GRO γ siRNA (h): sc-43815, GRO γ shRNA Plasmid (h): sc-43815-SH and GRO γ shRNA (h) Lentiviral Particles: sc-43815-V.

Molecular Weight of GRO γ : 8 kDa.

RECOMMENDED SECONDARY REAGENTS

To ensure optimal results, the following support (secondary) reagents are recommended: 1) Western Blotting: use donkey anti-goat IgG-HRP: sc-2020 (dilution range: 1:2000-1:100,000) or Cruz Marker™ compatible donkey anti-goat IgG-HRP: sc-2033 (dilution range: 1:2000-1:5000), Cruz Marker™ Molecular Weight Standards: sc-2035, TBS Blotto A Blocking Reagent: sc-2333 and Western Blotting Luminol Reagent: sc-2048. 2) Immunoprecipitation: use Protein A/G PLUS-Agarose: sc-2003 (0.5 ml agarose/2.0 ml). 3) Immunofluorescence: use donkey anti-goat IgG-FITC: sc-2024 (dilution range: 1:100-1:400) or donkey anti-goat IgG-TR: sc-2783 (dilution range: 1:100-1:400) with UltraCruz™ Mounting Medium: sc-24941.

DATA



GRO γ (C-15): sc-1376. Western blot analysis of human recombinant GRO γ .

SELECT PRODUCT CITATIONS

1. De Paepe, B., et al. 2005. α -chemokine receptors CXCR1-3 and their ligands in idiopathic inflammatory myopathies. *Acta Neuropathol.* 109: 576-582.
2. Verhaeghe, C., et al. 2007. Early inflammation in the airways of a cystic fibrosis foetus. *J. Cyst. Fibros.* 6: 304-308.
3. De Paepe, B., et al. 2012. Upregulation of chemokines and their receptors in duchenne muscular dystrophy: potential for attenuation of myofiber necrosis. *Muscle Nerve* 45: 914-916.

RESEARCH USE

For research use only, not for use in diagnostic procedures.

PROTOCOLS

See our web site at www.scbt.com or our catalog for detailed protocols and support products.

MONOS
Satisfaction
Guaranteed

Try GRO α / β / γ (A-6): sc-365870, our highly recommended monoclonal alternative to GRO γ (C-15).