

PLEKHN1 (S-13): sc-137678

BACKGROUND

PLEKHN1 (pleckstrin homology domain containing, family N member 1) is a 663 amino acid phosphoprotein that contains 2 pleckstrin homology (PH) domains. Conserved in canine, bovine, mouse and rat, PLEKHN1 exists as three alternatively spliced isoforms and is encoded by a gene that maps to human chromosome 1p36.33. As the largest human chromosome, chromosome 1 makes up approximately 8% of the human genome and contains 260 million base pairs encoding 3,000 genes. Numerous diseases are linked to chromosome 1, such as the rare aging disease Hutchinson-Gilford progeria, familial adenomatous polyposis, Stickler syndrome, Parkinson's disease, Gaucher disease and Usher syndrome. Aberrations in chromosome 1 also exist in a variety of cancers, including head and neck cancer, malignant melanoma and multiple myeloma.

REFERENCES

- Weise, A., Starke, H., Mrasek, K., Claussen, U. and Liehr, T. 2005. New insights into the evolution of chromosome 1. *Cytogenet. Genome Res.* 108: 217-222.
- Marzin, Y., Jamet, D., Douet-Guilbert, N., Morel, F., Le Bris, M.J., Morice, P., Abgrall, J.F., Berthou, C. and De Braekeleer, M. 2006. Chromosome 1 abnormalities in multiple myeloma. *Anticancer Res.* 26: 953-959.
- Gregory, S.G., Barlow, K.F., McLay, K.E., Kaul, R., Swarbreck, D., Dunham, A., Scott, C.E., Howe, K.L., Woodfine, K., Spencer, C.C., Jones, M.C., Gillson, C., Searle, S., Zhou, Y., Kokocinski, F., et al. 2006. The DNA sequence and biological annotation of human chromosome 1. *Nature* 441: 315-321.
- McClintock, D., Gordon, L.B. and Djabali, K. 2006. Hutchinson-Gilford progeria mutant lamin A primarily targets human vascular cells as detected by an anti-Lamin A G608G antibody. *Proc. Natl. Acad. Sci. USA* 103: 2154-2159.
- Bowden, N.A., Croft, A. and Scott, R.J. 2007. Gene expression profiling in familial adenomatous polyposis adenomas and desmoid disease. *Hered. Cancer Clin. Pract.* 5: 79-96.
- Meza-Zepeda, L.A., Noer, A., Dahl, J.A., Micci, F., Myklebost, O. and Collas, P. 2008. High-resolution analysis of genetic stability of human adipose tissue stem cells cultured to senescence. *J. Cell. Mol. Med.* 12: 553-563.

CHROMOSOMAL LOCATION

Genetic locus: PLEKHN1 (human) mapping to 1p36.33.

SOURCE

PLEKHN1 (S-13) is an affinity purified rabbit polyclonal antibody raised against a peptide mapping near the C-terminus of PLEKHN1 of human origin.

PRODUCT

Each vial contains 100 µg IgG in 1.0 ml of PBS with < 0.1% sodium azide and 0.1% gelatin.

Blocking peptide available for competition studies, sc-137678 P, (100 µg peptide in 0.5 ml PBS containing < 0.1% sodium azide and 0.2% BSA).

APPLICATIONS

PLEKHN1 (S-13) is recommended for detection of PLEKHN1 isoforms 1-3 of human origin by Western Blotting (starting dilution 1:100, dilution range 1:50-1:500), immunoprecipitation [1-2 µg per 100-500 µg of total protein (1 ml of cell lysate)], immunofluorescence (starting dilution 1:25, dilution range 1:25-1:250) and solid phase ELISA (starting dilution 1:30, dilution range 1:30-1:3000).

Suitable for use as control antibody for PLEKHN1 siRNA (h): sc-88711, PLEKHN1 shRNA Plasmid (h): sc-88711-SH and PLEKHN1 shRNA (h) Lentiviral Particles: sc-88711-V.

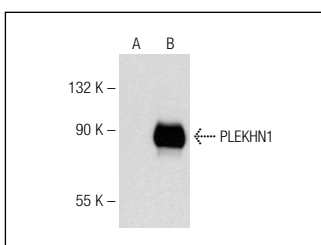
Molecular Weight of PLEKHN1 isoforms 1/2/3: 72/66/63 kDa.

Positive Controls: PLEKHN1 (h): 293T Lysate: sc-129490.

RECOMMENDED SECONDARY REAGENTS

To ensure optimal results, the following support (secondary) reagents are recommended: 1) Western Blotting: use goat anti-rabbit IgG-HRP: sc-2004 (dilution range: 1:2000-1:100,000) or Cruz Marker™ compatible goat anti-rabbit IgG-HRP: sc-2030 (dilution range: 1:2000-1:5000), Cruz Marker™ Molecular Weight Standards: sc-2035, TBS Blotto A Blocking Reagent: sc-2333 and Western Blotting Luminol Reagent: sc-2048. 2) Immunoprecipitation: use Protein A/G PLUS-Agarose: sc-2003 (0.5 ml agarose/2.0 ml). 3) Immunofluorescence: use goat anti-rabbit IgG-FITC: sc-2012 (dilution range: 1:100-1:400) or goat anti-rabbit IgG-TR: sc-2780 (dilution range: 1:100-1:400) with UltraCruz™ Mounting Medium: sc-24941.

DATA



PLEKHN1 (S-13): sc-137678. Western blot analysis of PLEKHN1 expression in non-transfected: sc-117752 (A) and human PLEKHN1 transfected: sc-129490 (B) 293T whole cell lysates.

STORAGE

Store at 4° C, **DO NOT FREEZE**. Stable for one year from the date of shipment. Non-hazardous. No MSDS required.

RESEARCH USE

For research use only, not for use in diagnostic procedures.

PROTOCOLS

See our web site at www.scbt.com or our catalog for detailed protocols and support products.