

PRR18 (P-12): sc-137693

BACKGROUND

Proline-rich proteins are often involved in protein-protein interactions and typically act as ligands for SH3, WW and EVH1 domains. PRR18 (proline rich 18) is a 295 amino acid protein that is encoded by a gene that maps to human chromosome 6q27 and mouse chromosome 17 A1. Making up nearly 6% of the human genome, chromosome 6 contains around 1,200 genes within 170 million base pairs of sequence. Deletion of a portion of the q arm of chromosome 6 is associated with early onset intestinal cancer suggesting the presence of a cancer susceptibility locus. Porphyria cutanea tarda is associated with chromosome 6 through the HFE gene which, when mutated, predisposes an individual to developing this porphyria. Notably, the PARK2 gene, which is associated with Parkinson's disease, and the genes encoding the major histocompatibility complex proteins are also located on chromosome 6. Stickler syndrome, 21-hydroxylase deficiency and maple syrup urine disease are also associated with genes on chromosome 6. A bipolar disorder susceptibility locus has been identified on the q arm of chromosome 6.

REFERENCES

1. Zneimer, S.M., et al. 1991. Regional assignment of two genes of the human branched-chain α -keto acid dehydrogenase complex: the E1 β gene (BCK-DHB) to chromosome 6p21-22 and the E2 gene (DBT) to chromosome 1p31. *Genomics* 10: 740-747.
2. Brunner, H.G., et al. 1994. A Stickler syndrome gene is linked to chromosome 6 near the COL11A2 gene. *Hum. Mol. Genet.* 3: 1561-1564.
3. Bedford, M.T., et al. 1997. FBP WW domains and the Abl SH3 domain bind to a specific class of proline-rich ligands. *EMBO J.* 16: 2376-2383.
4. Kay, B.K., et al. 2000. The importance of being proline: the interaction of proline-rich motifs in signaling proteins with their cognate domains. *FASEB J.* 14: 231-241.
5. Cesari, R., et al. 2003. Parkin, a gene implicated in autosomal recessive juvenile parkinsonism, is a candidate tumor suppressor gene on chromosome 6q25-q27. *Proc. Natl. Acad. Sci. USA* 100: 5956-5961.
6. Bläker, H., et al. 2008. Recurrent deletions at 6q in early age of onset non-HNPCC- and non-FAP-associated intestinal carcinomas. Evidence for a novel cancer susceptibility locus at 6q14-q22. *Genes Chromosomes Cancer* 47: 159-164.

CHROMOSOMAL LOCATION

Genetic locus: PRR18 (human) mapping to 6q27; Prr18 (mouse) mapping to 17 A1.

SOURCE

PRR18 (P-12) is an affinity purified rabbit polyclonal antibody raised against a peptide mapping near the N-terminus of PRR18 of human origin.

STORAGE

Store at 4° C, ****DO NOT FREEZE****. Stable for one year from the date of shipment. Non-hazardous. No MSDS required.

PRODUCT

Each vial contains 100 μ g IgG in 1.0 ml of PBS with < 0.1% sodium azide and 0.1% gelatin.

Blocking peptide available for competition studies, sc-137693 P, (100 μ g peptide in 0.5 ml PBS containing < 0.1% sodium azide and 0.2% BSA).

APPLICATIONS

PRR18 (P-12) is recommended for detection of PRR18 of mouse, rat and human origin by Western Blotting (starting dilution 1:100, dilution range 1:50-1:500), immunoprecipitation [1-2 μ g per 100-500 μ g of total protein (1 ml of cell lysate)], immunofluorescence (starting dilution 1:25, dilution range 1:25-1:250) and solid phase ELISA (starting dilution 1:30, dilution range 1:30-1:3000); non cross-reactive with other PRR family members.

Suitable for use as control antibody for PRR18 siRNA (h): sc-95383, PRR18 siRNA (m): sc-152510, PRR18 shRNA Plasmid (h): sc-95383-SH, PRR18 shRNA Plasmid (m): sc-152510-SH, PRR18 shRNA (h) Lentiviral Particles: sc-95383-V and PRR18 shRNA (m) Lentiviral Particles: sc-152510-V.

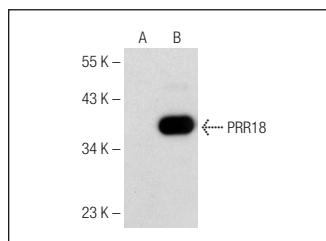
Molecular Weight of PRR18: 31 kDa.

Positive Controls: PRR18 (h): 293T Lysate: sc-114510.

RECOMMENDED SECONDARY REAGENTS

To ensure optimal results, the following support (secondary) reagents are recommended: 1) Western Blotting: use goat anti-rabbit IgG-HRP: sc-2004 (dilution range: 1:2000-1:100,000) or Cruz Marker™ compatible goat anti-rabbit IgG-HRP: sc-2030 (dilution range: 1:2000-1:5000), Cruz Marker™ Molecular Weight Standards: sc-2035, TBS Blotto A Blocking Reagent: sc-2333 and Western Blotting Luminol Reagent: sc-2048. 2) Immunoprecipitation: use Protein A/G PLUS-Agarose: sc-2003 (0.5 ml agarose/2.0 ml). 3) Immunofluorescence: use goat anti-rabbit IgG-FITC: sc-2012 (dilution range: 1:100-1:400) or goat anti-rabbit IgG-TR: sc-2780 (dilution range: 1:100-1:400) with UltraCruz™ Mounting Medium: sc-24941.

DATA



PRR18 (P-12): sc-137693. Western blot analysis of PRR18 expression in non-transfected: sc-117752 (A) and human PRR18 transfected: sc-114510 (B) 293T whole cell lysates.

RESEARCH USE

For research use only, not for use in diagnostic procedures.