

RNF186 (S-14): sc-137735

BACKGROUND

The RING finger motif is a specialized DNA-binding zinc finger domain found in many transcriptional regulatory proteins. The ring finger protein (RNF) family includes any protein containing the signature RING finger motif. RNF186 (RING finger protein 186) is a 227 amino acid multi-pass membrane protein containing one RING-type zinc finger. The gene encoding RNF186 maps to human chromosome 1p36.13. Chromosome 1 is the largest human chromosome spanning about 260 million base pairs and making up 8% of the human genome. There are about 3,000 genes on chromosome 1, and considering the great number of genes there are also a large number of diseases associated with chromosome 1. Notably, the rare aging disease Hutchinson-Gilford progeria is associated with the LMNA gene which encodes lamin A. The MUTYH gene is located on chromosome 1 and is partially responsible for familial adenomatous polyposis. Stickler syndrome, Parkinsons, Gaucher disease and Usher syndrome are also associated with chromosome 1.

REFERENCES

1. Watson, M.L., Kingsmore, S.F., Johnston, G.I., Siegelman, M.H., Le Beau, M.M., Lemons, R.S., Bora, N.S., Howard, T.A., Weissman, I.L. and McEver, R.P. 1990. Genomic organization of the selectin family of leukocyte adhesion molecules on human and mouse chromosome 1. *J. Exp. Med.* 172: 263-272.
2. Oliveira, S.A., Li, Y.J., Noureddine, M.A., Zuchner, S., Qin, X., Pericak-Vance, M.A. and Vance, J.M. 2005. Identification of risk and age-at-onset genes on chromosome 1p in Parkinson disease. *Am. J. Hum. Genet.* 77: 252-264.
3. Kitamura, K., Tanaka, H. and Nishimune, Y. 2005. The RING-finger protein haprin: domains and function in the acrosome reaction. *Curr. Protein Pept. Sci.* 6: 567-574.
4. Gregory, S.G., Barlow, K.F., McLay, K.E., Kaul, R., Swarbreck, D., Dunham, A., Scott, C.E., Howe, K.L., Woodfine, K., Spencer, C.C., Jones, M.C., Gillson, C., Searle, S., Zhou, Y., et al. 2006. The DNA sequence and biological annotation of human chromosome 1. *Nature* 441: 315-321.

CHROMOSOMAL LOCATION

Genetic locus: RNF186 (human) mapping to 1p36.13; Rnf186 (mouse) mapping to 4 D3.

SOURCE

RNF186 (S-14) is an affinity purified rabbit polyclonal antibody raised against a peptide mapping near the N-terminus of RNF186 of human origin.

PRODUCT

Each vial contains 100 µg IgG in 1.0 ml of PBS with < 0.1% sodium azide and 0.1% gelatin.

Blocking peptide available for competition studies, sc-137735 P, (100 µg peptide in 0.5 ml PBS containing < 0.1% sodium azide and 0.2% BSA).

RESEARCH USE

For research use only, not for use in diagnostic procedures.

APPLICATIONS

RNF186 (S-14) is recommended for detection of RNF186 of mouse, rat and human origin by Western Blotting (starting dilution 1:100, dilution range 1:50-1:500), immunoprecipitation [1-2 µg per 100-500 µg of total protein (1 ml of cell lysate)], immunofluorescence (starting dilution 1:25, dilution range 1:25-1:250) and solid phase ELISA (starting dilution 1:30, dilution range 1:30-1:3000); non cross-reactive with other RNF family members.

Suitable for use as control antibody for RNF186 siRNA (h): sc-88425, RNF186 siRNA (m): sc-153033, RNF186 shRNA Plasmid (h): sc-88425-SH, RNF186 shRNA Plasmid (m): sc-153033-SH, RNF186 shRNA (h) Lentiviral Particles: sc-88425-V and RNF186 shRNA (m) Lentiviral Particles: sc-153033-V.

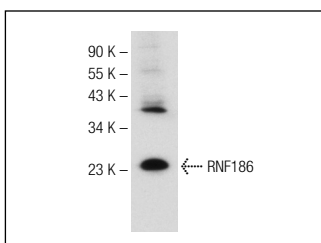
Molecular Weight of RNF186: 24 kDa.

Positive Controls: LNCaP cell lysate: sc-2231.

RECOMMENDED SECONDARY REAGENTS

To ensure optimal results, the following support (secondary) reagents are recommended: 1) Western Blotting: use goat anti-rabbit IgG-HRP: sc-2004 (dilution range: 1:2000-1:100,000) or Cruz Marker™ compatible goat anti-rabbit IgG-HRP: sc-2030 (dilution range: 1:2000-1:5000), Cruz Marker™ Molecular Weight Standards: sc-2035, TBS Blotto A Blocking Reagent: sc-2333 and Western Blotting Luminol Reagent: sc-2048. 2) Immunoprecipitation: use Protein A/G PLUS-Agarose: sc-2003 (0.5 ml agarose/2.0 ml). 3) Immunofluorescence: use goat anti-rabbit IgG-FITC: sc-2012 (dilution range: 1:100-1:400) or goat anti-rabbit IgG-TR: sc-2780 (dilution range: 1:100-1:400) with UltraCruz™ Mounting Medium: sc-24941.

DATA



RNF186 (S-14): sc-137735. Western blot analysis of RNF186 expression in LNCaP whole cell lysate.

STORAGE

Store at 4° C, **DO NOT FREEZE**. Stable for one year from the date of shipment. Non-hazardous. No MSDS required.

PROTOCOLS

See our web site at www.scbt.com or our catalog for detailed protocols and support products.