

SDCCAG8 (N-16): sc-137753

BACKGROUND

SDCCAG8 (serologically defined colon cancer antigen 8), also known as CCCAP (centrosomal colon cancer autoantigen protein), HSPC085 or NY-CO-8, is a 713 amino acid cytoplasmic protein that is expressed in thymus, prostate, testis, ovary, small intestine, colon, mucosa and renal cancer tumors. Existing as a homodimer, SDCCAG8 localizes to centrioles and interacts with oral-facial-digital syndrome 1 (ODF1), which is associated with nephronophthisis-related ciliopathies (NPHP-RC), a recessive disorder that is characterized by dysplasia or degeneration of the kidney, retina and cerebellum. SDCCAG8 exists as 4 alternatively spliced isoforms and is encoded by a gene located on human chromosome 1, which spans 260 million base pairs, contains over 3,000 genes and comprises nearly 8% of the human genome.

REFERENCES

1. Kenedy, A.A., et al. 2003. Identification and characterization of the novel centrosome-associated protein CCCAP. *Gene* 303: 35-46.
2. Marzin, Y., et al. 2006. Chromosome 1 abnormalities in multiple myeloma. *Anticancer Res.* 26: 953-959.
3. Gregory, S.G., et al. 2006. The DNA sequence and biological annotation of human chromosome 1. *Nature* 441: 315-321.
4. Stacey, S.N., et al. 2008. Common variants on 1p36 and 1q42 are associated with cutaneous basal cell carcinoma but not with melanoma or pigmentation traits. *Nat. Genet.* 40: 1313-1318.
5. Otto, E.A., et al. 2010. Candidate exome capture identifies mutation of SDCCAG8 as the cause of a retinal-renal ciliopathy. *Nat. Genet.* 42: 840-850.
6. Scherag, A., et al. 2010. Two new Loci for body-weight regulation identified in a joint analysis of genome-wide association studies for early-onset extreme obesity in French and German study groups. *PLoS Genet.* 6: e1000916.
7. SWISS-PROT/TrEMBL (Q86SQ7). World Wide Web URL: <http://www.uniprot.org/uniprot/Q86SQ7>

CHROMOSOMAL LOCATION

Genetic locus: SDCCAG8 (human) mapping to 1q43; *Sdccag8* (mouse) mapping to 1 H4.

SOURCE

SDCCAG8 (N-16) is an affinity purified goat polyclonal antibody raised against a peptide mapping near the N-terminus of SDCCAG8 of human origin.

PRODUCT

Each vial contains 200 µg IgG in 1.0 ml of PBS with < 0.1% sodium azide and 0.1% gelatin.

Blocking peptide available for competition studies, sc-137753 P, (100 µg peptide in 0.5 ml PBS containing < 0.1% sodium azide and 0.2% BSA).

RESEARCH USE

For research use only, not for use in diagnostic procedures.

APPLICATIONS

SDCCAG8 (N-16) is recommended for detection of SDCCAG8 of mouse, rat and human origin by Western Blotting (starting dilution 1:200, dilution range 1:100-1:1000), immunoprecipitation [1-2 µg per 100-500 µg of total protein (1 ml of cell lysate)], immunofluorescence (starting dilution 1:50, dilution range 1:50-1:500) and solid phase ELISA (starting dilution 1:30, dilution range 1:30-1:3000); non cross-reactive with SDCCAG1, SDCCAG3 or SDCCAG10.

SDCCAG8 (N-16) is also recommended for detection of SDCCAG8 in additional species, including bovine.

Suitable for use as control antibody for SDCCAG8 siRNA (h): sc-78905, SDCCAG8 siRNA (m): sc-153285, SDCCAG8 shRNA Plasmid (h): sc-78905-SH, SDCCAG8 shRNA Plasmid (m): sc-153285-SH, SDCCAG8 shRNA (h) Lentiviral Particles: sc-78905-V and SDCCAG8 shRNA (m) Lentiviral Particles: sc-153285-V.

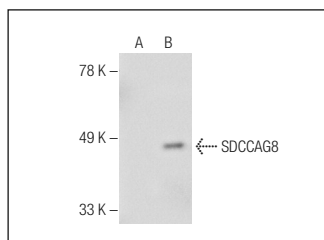
Molecular Weight of SDCCAG8: 83 kDa.

Positive Controls: SDCCAG8 (m): 293T Lysate: sc-123401.

RECOMMENDED SECONDARY REAGENTS

To ensure optimal results, the following support (secondary) reagents are recommended: 1) Western Blotting: use donkey anti-goat IgG-HRP: sc-2020 (dilution range: 1:2000-1:100,000) or Cruz Marker™ compatible donkey anti-goat IgG-HRP: sc-2033 (dilution range: 1:2000-1:5000), Cruz Marker™ Molecular Weight Standards: sc-2035, TBS Blotto A Blocking Reagent: sc-2333 and Western Blotting Luminol Reagent: sc-2048. 2) Immunoprecipitation: use Protein A/G PLUS-Agarose: sc-2003 (0.5 ml agarose/2.0 ml). 3) Immunofluorescence: use donkey anti-goat IgG-FITC: sc-2024 (dilution range: 1:100-1:400) or donkey anti-goat IgG-TR: sc-2783 (dilution range: 1:100-1:400) with UltraCruz™ Mounting Medium: sc-24941.

DATA



SDCCAG8 (N-16): sc-137753. Western blot analysis of SDCCAG8 expression in non-transfected: sc-117752 (A) and mouse SDCCAG8 transfected: sc-123401 (B) 293T whole cell lysates.

STORAGE

Store at 4° C, **DO NOT FREEZE**. Stable for one year from the date of shipment. Non-hazardous. No MSDS required.

PROTOCOLS

See our web site at www.scbt.com or our catalog for detailed protocols and support products.