

## SSB-1 (P-13): sc-137800

### BACKGROUND

Members of the suppressor of cytokine signaling (SOCS) family of proteins contain C-terminal regions of homology called the SOCS box, which serves to couple SOCS proteins and their binding partners with the Elongin BC complex, thereby mediating protein degradation. Several other families of proteins also contain SOCS boxes, but differ from the SOCS proteins in the type of domain they contain upstream of the SOCS box. SSB-1 (SPRY domain-containing SOCS box protein 1), also known as SPSB1, is a 273 amino acid protein belonging to the SPSB family. SSB-1 localizes to cytoplasm, and contains one B30.2/SPRY domain and one SOCS box domain. Functioning as a substrate recognition component of the Elongin BC complex, SSB-1 plays a role in the ubiquitination and subsequent proteasomal degradation of target proteins.

### REFERENCES

- Hilton, D.J., et al. 1998. Twenty proteins containing a C-terminal SOCS box form five structural classes. *Proc. Natl. Acad. Sci. USA* 95: 114-119.
- Wang, D., et al. 2005. The SPRY domain-containing SOCS box protein 1 (SSB-1) interacts with MET and enhances the hepatocyte growth factor-induced Erk-Elk-1-serum response element pathway. *J. Biol. Chem.* 280: 16393-16401.
- Masters, S.L., et al. 2005. Genetic deletion of murine SPRY domain-containing SOCS box protein 2 (SSB-2) results in very mild thrombocytopenia. *Mol. Cell. Biol.* 25: 5639-5647.
- Woo, J.S., et al. 2006. Structural basis for protein recognition by B30.2/SPRY domains. *Mol. Cell.* 24: 967-976.
- Masters, S.L., et al. 2006. The SPRY domain of SSB-2 adopts a novel fold that presents conserved Par-4-binding residues. *Nat. Struct. Mol. Biol.* 13: 77-84.
- Li, J.Z., et al. 2009. Cloning and characterization of the SSB-1 and SSB-4 genes expressed in zebrafish gonads. *Biochem. Genet.* 47: 179-190.
- Kleiber, M.L. and Singh, S.M. 2009. Divergence of the vertebrate sp1A/ryanodine receptor domain and SOCS box-containing (Spsb) gene family and its expression and regulation within the mouse brain. *Genomics* 93: 358-366.
- Kuang, Z., et al. 2009. SPRY domain-containing SOCS box protein 2: crystal structure and residues critical for protein binding. *J. Mol. Biol.* 386: 662-674.

### CHROMOSOMAL LOCATION

Genetic locus: SPSB1 (human) mapping to 1p36.22; Spsb1 (mouse) mapping to 4 E2.

### SOURCE

SSB-1 (P-13) is an affinity purified goat polyclonal antibody raised against a peptide mapping near the N-terminus of SSB-1 of human origin.

### RESEARCH USE

For research use only, not for use in diagnostic procedures.

### PRODUCT

Each vial contains 200 µg IgG in 1.0 ml of PBS with < 0.1% sodium azide and 0.1% gelatin.

Blocking peptide available for competition studies, sc-137800 P, (100 µg peptide in 0.5 ml PBS containing < 0.1% sodium azide and 0.2% BSA).

### APPLICATIONS

SSB-1 (P-13) is recommended for detection of SSB-1 of mouse, rat and human origin by Western Blotting (starting dilution 1:200, dilution range 1:100-1:1000), immunoprecipitation [1-2 µg per 100-500 µg of total protein (1 ml of cell lysate)], immunofluorescence (starting dilution 1:50, dilution range 1:50-1:500) and solid phase ELISA (starting dilution 1:30, dilution range 1:30-1:3000); non cross-reactive with SSB-2, SSB-3 or SSB-4.

SSB-1 (P-13) is also recommended for detection of SSB-1 in additional species, including equine and canine.

Suitable for use as control antibody for SSB-1 siRNA (h): sc-88214, SSB-1 siRNA (m): sc-153836, SSB-1 shRNA Plasmid (h): sc-88214-SH, SSB-1 shRNA Plasmid (m): sc-153836-SH, SSB-1 shRNA (h) Lentiviral Particles: sc-88214-V and SSB-1 shRNA (m) Lentiviral Particles: sc-153836-V.

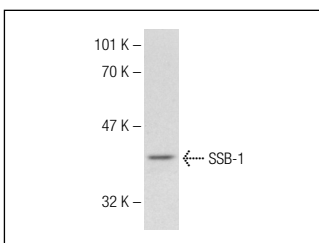
Molecular Weight of SSB-1: 31 kDa.

Positive Controls: NIH/3T3 whole cell lysate: sc-2210.

### RECOMMENDED SECONDARY REAGENTS

To ensure optimal results, the following support (secondary) reagents are recommended: 1) Western Blotting: use donkey anti-goat IgG-HRP: sc-2020 (dilution range: 1:2000-1:100,000) or Cruz Marker™ compatible donkey anti-goat IgG-HRP: sc-2033 (dilution range: 1:2000-1:5000), Cruz Marker™ Molecular Weight Standards: sc-2035, TBS Blotto A Blocking Reagent: sc-2333 and Western Blotting Luminol Reagent: sc-2048. 2) Immunoprecipitation: use Protein A/G PLUS-Agarose: sc-2003 (0.5 ml agarose/2.0 ml). 3) Immunofluorescence: use donkey anti-goat IgG-FITC: sc-2024 (dilution range: 1:100-1:400) or donkey anti-goat IgG-TR: sc-2783 (dilution range: 1:100-1:400) with UltraCruz™ Mounting Medium: sc-24941.

### DATA



SSB-1 (P-13): sc-137800. Western blot analysis of SSB-1 expression in NIH/3T3 whole cell lysate.

### STORAGE

Store at 4° C, \*\*DO NOT FREEZE\*\*. Stable for one year from the date of shipment. Non-hazardous. No MSDS required.