

TCP-10 (G-15): sc-137829

BACKGROUND

TCP-10 (t-complex 10 homolog), also known as TCP10A, is a 353 amino acid protein belonging to the TCP10 family. TCP-10 exists as two alternatively spliced isoforms and is encoded by a gene located human chromosome 6q27. Making up nearly 6% of the human genome, chromosome 6 contains around 1,200 genes within 170 million base pairs of sequence. Deletion of a portion of the q arm of chromosome 6 is associated with early onset intestinal cancer suggesting the presence of a cancer susceptibility locus. Porphyrria cutanea tarda is associated with chromosome 6 through the HFE gene which, when mutated, predisposes an individual to developing this porphyria. Notably, the PARK2 gene, which is associated with Parkinson's disease, and the genes encoding the major histocompatibility complex proteins, which are key molecular components of the immune system and determine predisposition to rheumatic diseases, are also located on chromosome 6. Stickler syndrome, 21-hydroxylase deficiency and maple syrup urine disease are also associated with genes on chromosome 6. A bipolar disorder susceptibility locus has been identified on the q arm of chromosome 6.

REFERENCES

- Mungall, A.J., et al. 2003. The DNA sequence and analysis of human chromosome 6. *Nature* 425: 805-811.
- Vuoristo, M.M., et al. 2004. A stop codon mutation in COL11A2 induces exon skipping and leads to non-ocular Stickler syndrome. *Am. J. Med. Genet. A* 130: 160-164.
- McQueen, M.B., et al. 2005. Combined analysis from eleven linkage studies of bipolar disorder provides strong evidence of susceptibility loci on chromosomes 6q and 8q. *Am. J. Hum. Genet.* 77: 582-595.
- Batts, K.P. 2007. Iron overload syndromes and the liver. *Mod. Pathol.* 20 Suppl. 1: S31-S39.
- Olsson, K.S., et al. 2007. The HLA-A1-B8 haplotype hitchhiking with the hemochromatosis mutation: does it affect the phenotype? *Eur. J. Haematol.* 79: 429-434.
- Park, E., et al. 2007. Modulation of parkin gene expression in noradrenergic neuronal cells. *Int. J. Dev. Neurosci.* 25: 491-497.
- Safadi, S.S. and Shaw, G.S. 2007. A disease state mutation unfolds the Parkin ubiquitin-like domain. *Biochemistry* 46: 14162-14169.

CHROMOSOMAL LOCATION

Genetic locus: TCP10 (human) mapping to 6q27.

SOURCE

TCP-10 (G-15) is an affinity purified goat polyclonal antibody raised against a peptide mapping within an internal region of TCP-10 of human origin.

PRODUCT

Each vial contains 200 µg IgG in 1.0 ml of PBS with < 0.1% sodium azide and 0.1% gelatin.

Blocking peptide available for competition studies, sc-137829 P, (100 µg peptide in 0.5 ml PBS containing < 0.1% sodium azide and 0.2% BSA).

APPLICATIONS

TCP-10 (G-15) is recommended for detection of TCP-10 of human origin by Western Blotting (starting dilution 1:200, dilution range 1:100-1:1000), immunoprecipitation [1-2 µg per 100-500 µg of total protein (1 ml of cell lysate)], immunofluorescence (starting dilution 1:50, dilution range 1:50-1:500) and solid phase ELISA (starting dilution 1:30, dilution range 1:30-1:3000); non cross-reactive with other TCP family members.

Suitable for use as control antibody for TCP-10 siRNA (h): sc-95400, TCP-10 shRNA Plasmid (h): sc-95400-SH and TCP-10 shRNA (h) Lentiviral Particles: sc-95400-V.

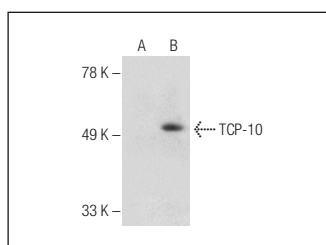
Molecular Weight of TCP-10 isoforms: 38/35 kDa.

Positive Controls: TCP-10 (h): 293T Lysate: sc-371257.

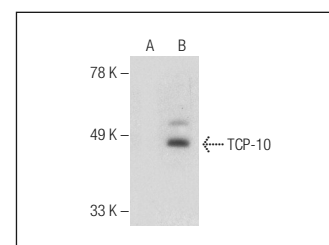
RECOMMENDED SECONDARY REAGENTS

To ensure optimal results, the following support (secondary) reagents are recommended: 1) Western Blotting: use donkey anti-goat IgG-HRP: sc-2020 (dilution range: 1:2000-1:100,000) or Cruz Marker™ compatible donkey anti-goat IgG-HRP: sc-2033 (dilution range: 1:2000-1:5000), Cruz Marker™ Molecular Weight Standards: sc-2035, TBS Blotting A Blocking Reagent: sc-2333 and Western Blotting Luminol Reagent: sc-2048. 2) Immunoprecipitation: use Protein A/G PLUS-Agarose: sc-2003 (0.5 ml agarose/2.0 ml). 3) Immunofluorescence: use donkey anti-goat IgG-FITC: sc-2024 (dilution range: 1:100-1:400) or donkey anti-goat IgG-TR: sc-2783 (dilution range: 1:100-1:400) with UltraCruz™ Mounting Medium: sc-24941.

DATA



TCP-10 (G-15): sc-137829. Western blot analysis of TCP-10 expression in non-transfected: sc-117752 (A) and human TCP-10 transfected: sc-371257 (B) 293T whole cell lysates.



TCP-10 (G-15): sc-137829. Western blot analysis of TCP-10 expression in non-transfected: sc-117752 (A) and human TCP-10 transfected: sc-116766 (B) 293T whole cell lysates.

STORAGE

Store at 4° C, **DO NOT FREEZE**. Stable for one year from the date of shipment. Non-hazardous. No MSDS required.

RESEARCH USE

For research use only, not for use in diagnostic procedures.

PROTOCOLS

See our web site at www.scbt.com or our catalog for detailed protocols and support products.