

WDR23 (G-12): sc-137913

BACKGROUND

WD-repeats are motifs that are found in a variety of proteins and are characterized by a conserved core of 40-60 amino acids that commonly form a tertiary propeller structure. While proteins that contain WD-repeats participate in a wide range of cellular functions, they are generally involved in regulatory mechanisms concerning chromatin assembly, cell cycle control, signal transduction, RNA processing, apoptosis and vesicular trafficking. WDR23 (WD-repeat-containing protein 23), also known as GL014 or PRO2389, is a 546 amino acid protein that contains 7 WD-repeats. WDR23 is expressed as three isoforms due to alternative splicing events.

REFERENCES

1. van der Voorn, L. and Ploegh, H.L. 1992. The WD-40 repeat. *FEBS Lett.* 307: 131-134.
2. Neer, E.J., Schmidt, C.J., Nambudripad, R. and Smith, T.F. 1994. The ancient regulatory-protein family of WD-repeat proteins. *Nature* 371: 297-300.
3. Garcia-Higuera, I., Fenoglio, J., Li, Y., Lewis, C., Panchenko, M.P., Reiner, O., Smith, T.F. and Neer, E.J. 1996. Folding of proteins with WD-repeats: comparison of six members of the WD-repeat superfamily to the G protein β subunit. *Biochemistry* 35: 13985-13994.
4. Garcia-Higuera, I., Gaitatzes, C., Smith, T.F. and Neer, E.J. 1998. Folding a WD repeat propeller. Role of highly conserved aspartic acid residues in the G protein β subunit and Sec13. *J. Biol. Chem.* 273: 9041-9049.
5. Smith, T.F., Gaitatzes, C., Saxena, K. and Neer, E.J. 1999. The WD repeat: a common architecture for diverse functions. *Trends Biochem. Sci.* 24: 181-185.
6. Li, D. and Roberts, R. 2001. WD-repeat proteins: structure characteristics, biological function, and their involvement in human diseases. *Cell. Mol. Life Sci.* 58: 2085-2097.
7. Olsen, J.V., Blagoev, B., Gnäd, F., Macek, B., Kumar, C., Mortensen, P. and Mann, M. 2006. Global, *in vivo*, and site-specific phosphorylation dynamics in signaling networks. *Cell* 127: 635-648.

CHROMOSOMAL LOCATION

Genetic locus: DCAF11 (human) mapping to 14q11.2; Dcaf11 (mouse) mapping to 14 C3.

SOURCE

WDR23 (G-12) is an affinity purified goat polyclonal antibody raised against a peptide mapping within an internal region of WDR23 of human origin.

PRODUCT

Each vial contains 200 μ g IgG in 1.0 ml of PBS with < 0.1% sodium azide and 0.1% gelatin.

Blocking peptide available for competition studies, sc-137913 P, (100 μ g peptide in 0.5 ml PBS containing < 0.1% sodium azide and 0.2% BSA).

APPLICATIONS

WDR23 (G-12) is recommended for detection of WDR23 isoforms 1-3 of mouse, rat and human origin by Western Blotting (starting dilution 1:200, dilution range 1:100-1:1000), immunoprecipitation [1-2 μ g per 100-500 μ g of total protein (1 ml of cell lysate)], immunofluorescence (starting dilution 1:50, dilution range 1:50-1:500) and solid phase ELISA (starting dilution 1:30, dilution range 1:30-1:3000); non cross-reactive with other WDR family members.

WDR23 (G-12) is also recommended for detection of WDR23 isoforms 1-3 in additional species, including equine, canine and bovine.

Suitable for use as control antibody for WDR23 siRNA (h): sc-92412, WDR23 siRNA (m): sc-155267, WDR23 shRNA Plasmid (h): sc-92412-SH, WDR23 shRNA Plasmid (m): sc-155267-SH, WDR23 shRNA (h) Lentiviral Particles: sc-92412-V and WDR23 shRNA (m) Lentiviral Particles: sc-155267-V.

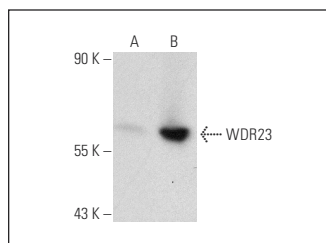
Molecular Weight of WDR23: 62 kDa.

Positive Controls: WDR23 (m): 293T Lysate: sc-124613.

RECOMMENDED SECONDARY REAGENTS

To ensure optimal results, the following support (secondary) reagents are recommended: 1) Western Blotting: use donkey anti-goat IgG-HRP: sc-2020 (dilution range: 1:2000-1:100,000) or Cruz Marker™ compatible donkey anti-goat IgG-HRP: sc-2033 (dilution range: 1:2000-1:5000), Cruz Marker™ Molecular Weight Standards: sc-2035, TBS Blotto A Blocking Reagent: sc-2333 and Western Blotting Luminol Reagent: sc-2048. 2) Immunoprecipitation: use Protein A/G PLUS-Agarose: sc-2003 (0.5 ml agarose/2.0 ml). 3) Immunofluorescence: use donkey anti-goat IgG-FITC: sc-2024 (dilution range: 1:100-1:400) or donkey anti-goat IgG-TR: sc-2783 (dilution range: 1:100-1:400) with UltraCruz™ Mounting Medium: sc-24941.

DATA



WDR23 (G-12): sc-137913. Western blot analysis of WDR23 expression in non-transfected: sc-117752 (A) and mouse WDR23 transfected: sc-124613 (B) 293T whole cell lysates.

STORAGE

Store at 4° C, **DO NOT FREEZE**. Stable for one year from the date of shipment. Non-hazardous. No MSDS required.

RESEARCH USE

For research use only, not for use in diagnostic procedures.