

# WDR54 (T-12): sc-137925

## BACKGROUND

WD-repeats are motifs that are found in a variety of proteins and are characterized by a conserved core of 40-60 amino acids that commonly form a tertiary propeller structure. While proteins that contain WD-repeats participate in a wide range of cellular functions, they are generally involved in regulatory mechanisms concerning chromatin assembly, cell cycle control, signal transduction, RNA processing, apoptosis and vesicular trafficking. WDR54 (WD repeat-containing protein 54) is a 334 amino acid protein that contains four WD repeats and is encoded by a gene that maps to human chromosome 2p13.1. Chromosome 2 consists of 237 million bases, encodes over 1,400 genes and makes up approximately 8% of the human genome. A number of genetic diseases are linked to genes on chromosome 2 including Harlequin ichthyosis, sitosterolemia and Alström syndrome.

## REFERENCES

1. van der Voorn, L. and Ploegh, H.L. 1992. The WD-40 repeat. *FEBS Lett.* 307: 131-134.
2. Neer, E.J., Schmidt, C.J., Nambudripad, R. and Smith, T.F. 1994. The ancient regulatory-protein family of WD-repeat proteins. *Nature* 371: 297-300.
3. Garcia-Higuera, I., Fenoglio, J., Li, Y., Lewis, C., Panchenko, M.P., Reiner, O., Smith, T.F. and Neer, E.J. 1996. Folding of proteins with WD-repeats: comparison of six members of the WD-repeat superfamily to the G protein beta subunit. *Biochemistry* 35: 13985-13994.
4. Patel, S.B., Salen, G., Hidaka, H., Kwiterovich, P.O., Stalenhoef, A.F., Miettinen, T.A., Grundy, S.M., Lee, M.H., Rubenstein, J.S., Polymeropoulos, M.H. and Brownstein, M.J. 1998. Mapping a gene involved in regulating dietary cholesterol absorption. The sitosterolemia locus is found at chromosome 2p21. *J. Clin. Invest.* 102: 1041-1044.
5. Smith, T.F., Gaitatzes, C., Saxena, K. and Neer, E.J. 1999. The WD repeat: a common architecture for diverse functions. *Trends Biochem. Sci.* 24: 181-185.
6. Zumsteg, U., Muller, P.Y. and Miserez, A.R. 2000. Alstrom syndrome: confirmation of linkage to chromosome 2p12-13 and phenotypic heterogeneity in three affected sibs. *J. Med. Genet.* 37: E8.
7. Kelsell, D.P., Norgett, E.E., Unsworth, H., Teh, M.T., Cullup, T., Mein, C.A., Dopping-Hepenstal, P.J., Dale, B.A., Tadini, G., Fleckman, P., Stephens, K.G., Sybert, V.P., Mallory, S.B., North, B.V., Witt, D.R., Sprecher, E., et al. 2005. Mutations in ABCA12 underlie the severe congenital skin disease harlequin ichthyosis. *Am. J. Hum. Genet.* 76: 794-803.

## CHROMOSOMAL LOCATION

Genetic locus: WDR54 (human) mapping to 2p13.1; Wdr54 (mouse) mapping to 6 C3.

## SOURCE

WDR54 (T-12) is an affinity purified rabbit polyclonal antibody raised against a peptide mapping within an internal region of WDR54 of human origin.

## PRODUCT

Each vial contains 100 µg IgG in 1.0 ml of PBS with < 0.1% sodium azide and 0.1% gelatin.

Blocking peptide available for competition studies, sc-137925 P, (100 µg peptide in 0.5 ml PBS containing < 0.1% sodium azide and 0.2% BSA).

## APPLICATIONS

WDR54 (T-12) is recommended for detection of WDR54 of mouse, rat and human origin by Western Blotting (starting dilution 1:100, dilution range 1:50-1:500), immunoprecipitation [1-2 µg per 100-500 µg of total protein (1 ml of cell lysate)], immunofluorescence (starting dilution 1:25, dilution range 1:25-1:250) and solid phase ELISA (starting dilution 1:30, dilution range 1:30-1:3000); non cross-reactive with other WDR family members.

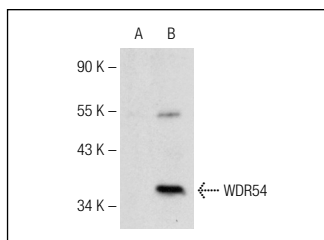
WDR54 (T-12) is also recommended for detection of WDR54 in additional species, including canine, bovine and porcine.

Suitable for use as control antibody for WDR54 siRNA (h): sc-94957, WDR54 siRNA (m): sc-155296, WDR54 shRNA Plasmid (h): sc-94957-SH, WDR54 shRNA Plasmid (m): sc-155296-SH, WDR54 shRNA (h) Lentiviral Particles: sc-94957-V and WDR54 shRNA (m) Lentiviral Particles: sc-155296-V.

Molecular Weight of WDR54: 36 kDa.

Positive Controls: WDR54 (h): 293T Lysate: sc-116388.

## DATA



WDR54 (T-12): sc-137925. Western blot analysis of WDR54 expression in non-transfected: sc-117752 (A) and human WDR54 transfected: sc-116388 (B) 293T whole cell lysates.

## STORAGE

Store at 4° C, **\*\*DO NOT FREEZE\*\***. Stable for one year from the date of shipment. Non-hazardous. No MSDS required.

## RESEARCH USE

For research use only, not for use in diagnostic procedures.

## PROTOCOLS

See our web site at [www.scbt.com](http://www.scbt.com) or our catalog for detailed protocols and support products.