

# WDR93 (N-18): sc-137937

## BACKGROUND

WD-repeats are motifs that are found in a variety of proteins and are characterized by a conserved core of 40-60 amino acids that commonly form a tertiary propeller structure. While proteins that contain WD-repeats participate in a wide range of cellular functions, they are generally involved in regulatory mechanisms concerning chromatin assembly, cell cycle control, signal transduction, RNA processing, apoptosis and vesicular trafficking. WDR93 (WD repeat-containing protein 93) is a 686 amino acid protein that contains one WD repeat and exists as two alternatively spliced isoforms. WDR93 is encoded by a gene that maps to human chromosome 15, which houses over 700 genes and comprises nearly 3% of the human genome. Angelman syndrome, Prader-Willi syndrome, Tay-Sachs disease and Marfan syndrome are all associated with defects in chromosome 15-localized genes.

## REFERENCES

- van der Voorn, L. and Ploegh, H.L. 1992. The WD-40 repeat. *FEBS Lett.* 307: 131-134.
- Hurowitz, G.I., Silver, J.M., Brin, M.F., Williams, D.T. and Johnson, W.G. 1993. Neuropsychiatric aspects of adult-onset Tay-Sachs disease: two case reports with several new findings. *J. Neuropsychiatry Clin. Neurosci.* 5: 30-36.
- Neer, E.J., Schmidt, C.J., Nambudripad, R. and Smith, T.F. 1994. The ancient regulatory-protein family of WD-repeat proteins. *Nature* 371: 297-300.
- Garcia-Higuera, I., Fenoglio, J., Li, Y., Lewis, C., Panchenko, M.P., Reiner, O., Smith, T.F. and Neer, E.J. 1996. Folding of proteins with WD-repeats: comparison of six members of the WD-repeat superfamily to the G protein beta subunit. *Biochemistry* 35: 13985-13994.
- Smith, T.F., Gaitatzes, C., Saxena, K. and Neer, E.J. 1999. The WD repeat: a common architecture for diverse functions. *Trends Biochem. Sci.* 24: 181-185.
- Midla, G.S. 2008. Diagnosis and management of patients with Marfan syndrome. *JAAPA* 21: 21-25.
- Hudson, A.M. and Cooley, L. 2008. Phylogenetic, structural and functional relationships between WD- and Kelch-repeat proteins. *Subcell. Biochem.* 48: 6-19.
- Wawrzik, M., Unmehopa, U.A., Swaab, D.F., van de Nes, J., Buiting, K. and Horsthemke, B. 2010. The C15orf2 gene in the Prader-Willi syndrome region is subject to genomic imprinting and positive selection. *Neurogenetics* 11: 153-161.

## CHROMOSOMAL LOCATION

Genetic locus: WDR93 (human) mapping to 15q26.1; Wdr93 (mouse) mapping to 7 D3.

## SOURCE

WDR93 (N-18) is an affinity purified rabbit polyclonal antibody raised against a peptide mapping near the N-terminus of WDR93 of human origin.

## PRODUCT

Each vial contains 100 µg IgG in 1.0 ml of PBS with < 0.1% sodium azide and 0.1% gelatin.

Blocking peptide available for competition studies, sc-137937 P, (100 µg peptide in 0.5 ml PBS containing < 0.1% sodium azide and 0.2% BSA).

## APPLICATIONS

WDR93 (N-18) is recommended for detection of WDR93 of mouse, rat and human origin by Western Blotting (starting dilution 1:100, dilution range 1:50-1:500), immunoprecipitation [1-2 µg per 100-500 µg of total protein (1 ml of cell lysate)], immunofluorescence (starting dilution 1:25, dilution range 1:25-1:250) and solid phase ELISA (starting dilution 1:30, dilution range 1:30-1:3000); non cross-reactive with other WDR family members.

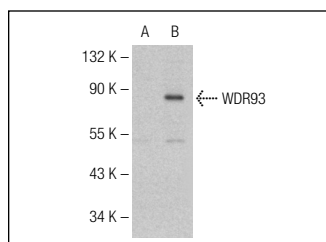
WDR93 (N-18) is also recommended for detection of WDR93 in additional species, including equine, bovine and porcine.

Suitable for use as control antibody for WDR93 siRNA (h): sc-90231, WDR93 siRNA (m): sc-155330, WDR93 shRNA Plasmid (h): sc-90231-SH, WDR93 shRNA Plasmid (m): sc-155330-SH, WDR93 shRNA (h) Lentiviral Particles: sc-90231-V and WDR93 shRNA (m) Lentiviral Particles: sc-155330-V.

Molecular Weight of WDR93 isoforms: 77/74 kDa.

Positive Controls: WDR93 (h): 293T Lysate: sc-116890.

## DATA



WDR93 (N-18): sc-137937. Western blot analysis of WDR93 expression in non-transfected: sc-117752 (A) and human WDR93 transfected: sc-116890 (B) 293T whole cell lysates.

## STORAGE

Store at 4° C, **\*\*DO NOT FREEZE\*\***. Stable for one year from the date of shipment. Non-hazardous. No MSDS required.

## RESEARCH USE

For research use only, not for use in diagnostic procedures.

## PROTOCOLS

See our web site at [www.scbt.com](http://www.scbt.com) or our catalog for detailed protocols and support products.