

CNPPD1 (E-13): sc-137982

BACKGROUND

CNPPD1 (cyclin Pas1/PHO80 domain containing 1), also known as CGI-57 or C2orf24, is a 410 amino acid single-pass membrane protein that is encoded by a gene located on human chromosome 2q35. The second largest human chromosome, 2 consists of 237 million bases encoding over 1,400 genes and making up approximately 8% of the human genome. A number of genetic diseases are linked to genes on chromosome 2. Harlequin ichthyosis, a rare and morbid skin deformity, is associated with mutations in the ABCA12 gene. The lipid metabolic disorder sitosterolemia is associated with ABCG5 and ABCG8. An extremely rare recessive genetic disorder, Alström syndrome is due to mutations in the ALMS1 gene. Interestingly, chromosome 2 contains what appears to be a vestigial second centromere and vestigial telomeres which gives credence to the hypothesis that human chromosome 2 is the result of an ancient fusion of two ancestral chromosomes seen in modern form today in apes.

REFERENCES

1. Jdo, J.W., et al. 1991. Origin of human chromosome 2: an ancestral telomere-telomere fusion. *Proc. Natl. Acad. Sci. USA* 88: 9051-9055.
2. Avarello, R., et al. 1992. Evidence for an ancestral alphoid domain on the long arm of human chromosome 2. *Hum. Genet.* 89: 247-249.
3. Hillier, L.W., et al. 2005. Generation and annotation of the DNA sequences of human chromosomes 2 and 4. *Nature* 434: 724-731.
4. Thomas, A.C., et al. 2006. ABCA12 is the major harlequin ichthyosis gene. *J. Invest. Dermatol.* 126: 2408-2413.
5. Akiyama, M., et al. 2007. Compound heterozygous ABCA12 mutations including a novel nonsense mutation underlie harlequin ichthyosis. *Dermatology* 215: 155-159.
6. Marshall, J.D., et al. 2007. Spectrum of ALMS1 variants and evaluation of genotype-phenotype correlations in Alström syndrome. *Hum. Mutat.* 28: 1114-1123.
7. Tabas, I. 2007. A two-carbon switch to sterol-induced autophagic death. *Autophagy* 3: 38-41.

CHROMOSOMAL LOCATION

Genetic locus: CNPPD1 (human) mapping to 2q35; Cnppd1 (mouse) mapping to 1 C3.

SOURCE

CNPPD1 (E-13) is an affinity purified rabbit polyclonal antibody raised against a peptide mapping within an internal region of CNPPD1 of human origin.

PRODUCT

Each vial contains 100 µg IgG in 1.0 ml of PBS with < 0.1% sodium azide and 0.1% gelatin.

Blocking peptide available for competition studies, sc-137982 P, (100 µg peptide in 0.5 ml PBS containing < 0.1% sodium azide and 0.2% BSA).

APPLICATIONS

CNPPD1 (E-13) is recommended for detection of CNPPD1 of mouse, rat and human origin by Western Blotting (starting dilution 1:100, dilution range 1:50-1:500), immunoprecipitation [1-2 µg per 100-500 µg of total protein (1 ml of cell lysate)], immunofluorescence (starting dilution 1:25, dilution range 1:25-1:250) and solid phase ELISA (starting dilution 1:30, dilution range 1:30-1:3000); non cross-reactive with other C2orf family members.

CNPPD1 (E-13) is also recommended for detection of CNPPD1 in additional species, including equine, canine, bovine and porcine.

Suitable for use as control antibody for CNPPD1 siRNA (h): sc-94406, CNPPD1 siRNA (m): sc-108567, CNPPD1 shRNA Plasmid (h): sc-94406-SH, CNPPD1 shRNA Plasmid (m): sc-108567-SH, CNPPD1 shRNA (h) Lentiviral Particles: sc-94406-V and CNPPD1 shRNA (m) Lentiviral Particles: sc-108567-V.

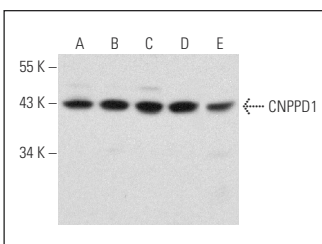
Molecular Weight of CNPPD1: 45 kDa.

Positive Controls: HeLa whole cell lysate: sc-2200, Jurkat whole cell lysate: sc-2204 or NIH/3T3 whole cell lysate: sc-2210.

RECOMMENDED SECONDARY REAGENTS

To ensure optimal results, the following support (secondary) reagents are recommended: 1) Western Blotting: use goat anti-rabbit IgG-HRP: sc-2004 (dilution range: 1:2000-1:100,000) or Cruz Marker™ compatible goat anti-rabbit IgG-HRP: sc-2030 (dilution range: 1:2000-1:5000), Cruz Marker™ Molecular Weight Standards: sc-2035, TBS Blotto A Blocking Reagent: sc-2333 and Western Blotting Luminol Reagent: sc-2048. 2) Immunoprecipitation: use Protein A/G PLUS-Agarose: sc-2003 (0.5 ml agarose/2.0 ml). 3) Immunofluorescence: use goat anti-rabbit IgG-FITC: sc-2012 (dilution range: 1:100-1:400) or goat anti-rabbit IgG-TR: sc-2780 (dilution range: 1:100-1:400) with UltraCruz™ Mounting Medium: sc-24941.

DATA



CNPPD1 (E-13): sc-137982. Western blot analysis of CNPPD1 expression in HeLa (A), Jurkat (B), HEK293 (C) and NIH/3T3 (D) whole cell lysates and mouse brain tissue extract (E).

STORAGE

Store at 4° C, **DO NOT FREEZE**. Stable for one year from the date of shipment. Non-hazardous. No MSDS required.

RESEARCH USE

For research use only, not for use in diagnostic procedures. support products.