

FAM21A/C (N-13): sc-137993

BACKGROUND

Playing an essential role in the fission of tubules that serve as transport intermediates during endosome sorting, the WASH complex is present at the surface of endosomes and functions to recruit and activate the Arp2/3 complex for induction of actin polymerization. FAM21, putative WASH complex subunit FAM21, is a component of the WASH complex. Having undergone evolutionary duplication, two highly homologous family members exist including FAM21A and FAM21C. FAM21 links the WASH complex to endosomes and is required for WASM-dependent retromer-mediated sorting. Also, by directly interacting with CapZ, FAM21 inhibits its anti-capping activity, thereby regulating actin dynamics.

REFERENCES

1. Miki, H. and Takenawa, T. 2003. Regulation of actin dynamics by WASP family proteins. *J. Biochem.* 134: 309-313.
2. Gomez, T.S. and Billadeau, D.D. 2009. A FAM21-containing WASH complex regulates retromer-dependent sorting. *Dev. Cell* 17: 699-711.
3. Derivery, E., Sousa, C., Gautier, J.J., Lombard, B., Loew, D. and Gautreau, A. 2009. The Arp2/3 activator WASH controls the fission of endosomes through a large multiprotein complex. *Dev. Cell* 17: 712-723.
4. Derivery, E. and Gautreau, A. 2010. Evolutionary conservation of the WASH complex, an actin polymerization machine involved in endosomal fission. *Commun. Integr. Biol.* 3: 227-230.
5. Derivery, E. and Gautreau, A. 2010. Assaying WAVE and WASH complex constitutive activities toward the Arp2/3 complex. *Meth. Enzymol.* 484: 677-695.
6. Veltman, D.M. and Insall, R.H. 2010. WASP family proteins: their evolution and its physiological implications. *Mol. Biol. Cell* 21: 2880-2893.
7. Hernandez-Valladares, M., Kim, T., Kannan, B., Tung, A., Aguda, A.H., Larsson, M., Cooper, J.A. and Robinson, R.C. 2010. Structural characterization of a capping protein interaction motif defines a family of actin filament regulators. *Nat. Struct. Mol. Biol.* 17: 497-503.
8. Jia, D., Gomez, T.S., Metlagel, Z., Umetani, J., Otwinowski, Z., Rosen, M.K. and Billadeau, D.D. 2010. WASH and WAVE actin regulators of the Wiskott-Aldrich syndrome protein (WASP) family are controlled by analogous structurally related complexes. *Proc. Natl. Acad. Sci. USA* 107: 10442-10447.

CHROMOSOMAL LOCATION

Genetic locus: FAM21A (human) mapping to 10q11.23, FAM21C (human) mapping to 10q11.22.

SOURCE

FAM21A/C (N-13) is an affinity purified rabbit polyclonal antibody raised against a peptide mapping near the N-terminus of FAM21C of human origin.

STORAGE

Store at 4° C, ****DO NOT FREEZE****. Stable for one year from the date of shipment. Non-hazardous. No MSDS required.

PRODUCT

Each vial contains 100 µg IgG in 1.0 ml of PBS with < 0.1% sodium azide and 0.1% gelatin.

Blocking peptide available for competition studies, sc-137993 P, (100 µg peptide in 0.5 ml PBS containing < 0.1% sodium azide and 0.2% BSA).

APPLICATIONS

FAM21A/C (N-13) is recommended for detection of FAM21A or FAM21C of human origin by Western Blotting (starting dilution 1:100, dilution range 1:50-1:500), immunoprecipitation [1-2 µg per 100-500 µg of total protein (1 ml of cell lysate)], immunofluorescence (starting dilution 1:25, dilution range 1:25-1:250) and solid phase ELISA (starting dilution 1:30, dilution range 1:30-1:3000).

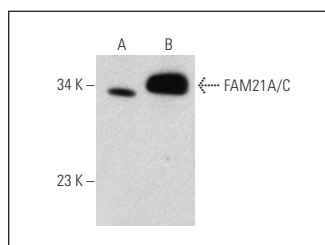
Molecular Weight of FAM21A/C: 147 kDa.

Positive Controls: HEK293 whole cell lysate: sc-45136 or human PBL whole cell lysate.

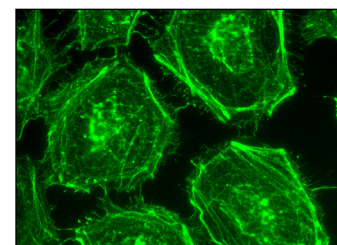
RECOMMENDED SECONDARY REAGENTS

To ensure optimal results, the following support (secondary) reagents are recommended: 1) Western Blotting: use goat anti-rabbit IgG-HRP: sc-2004 (dilution range: 1:2000-1:100,000) or Cruz Marker™ compatible goat anti-rabbit IgG-HRP: sc-2030 (dilution range: 1:2000-1:5000), Cruz Marker™ Molecular Weight Standards: sc-2035, TBS Blotto A Blocking Reagent: sc-2333 and Western Blotting Luminol Reagent: sc-2048. 2) Immunoprecipitation: use Protein A/G PLUS-Agarose: sc-2003 (0.5 ml agarose/2.0 ml). 3) Immunofluorescence: use goat anti-rabbit IgG-FITC: sc-2012 (dilution range: 1:100-1:400) or goat anti-rabbit IgG-TR: sc-2780 (dilution range: 1:100-1:400) with UltraCruz™ Mounting Medium: sc-24941.

DATA



FAM21A/C (N-13): sc-137993. Western blot analysis of FAM21A/C expression in HEK293 (A) and human PBL (B) whole cell lysates.



FAM21A/C (N-13): sc-137993. Immunofluorescence staining of methanol-fixed HeLa cells showing membrane and cytoskeletal localization.

RESEARCH USE

For research use only, not for use in diagnostic procedures.

PROTOCOLS

See our web site at www.scbt.com or our catalog for detailed protocols and support products.