

# ISOC1 (K-14): sc-138029

## BACKGROUND

With 181 million base pairs encoding around 1,000 genes, chromosome 5 is about 6% of human genomic DNA. It is associated with Cockayne syndrome through the ERCC8 gene and familial adenomatous polyposis through the adenomatous polyposis coli (APC) tumor suppressor gene. Treacher Collins syndrome is also chromosome 5 associated and is caused by insertions or deletions within the TCOF1 gene. Deletion of the p arm of chromosome 5 leads to Cri du chat syndrome. Deletion of 5q or chromosome 5 altogether is common in therapy-related acute myelogenous leukemias and myelodysplastic syndrome.

## REFERENCES

- Dixon, M.J., Read, A.P., Donnai, D., Colley, A., Dixon, J. and Williamson, R. 1991. The gene for Treacher Collins syndrome maps to the long arm of chromosome 5. *Am. J. Hum. Genet.* 49: 17-22.
- Saltman, D.L., Dolganov, G.M., Warrington, J.A., Wasmuth, J.J. and Lovett, M. 1993. A physical map of 15 loci on human chromosome 5q23-q33 by two-color fluorescence *in situ* hybridization. *Genomics* 16: 726-732.
- Kadmon, M., Tandara, A. and Herfarth, C. 2001. Duodenal adenomatosis in familial adenomatous polyposis coli. A review of the literature and results from the Heidelberg Polyposis Register. *Int. J. Colorectal Dis.* 16: 63-75.
- South, S.T., Swensen, J.J., Maxwell, T., Rope, A., Brothman, A.R. and Chen, Z. 2006. A new genomic mechanism leading to cri-du-chat syndrome. *Am. J. Med. Genet. A* 140: 2714-2720.
- Aretz, S., Stienen, D., Friedrichs, N., Stemmler, S., Uhlhaas, S., Rahner, N., Propping, P. and Friedl, W. 2007. Somatic APC mosaicism: a frequent cause of familial adenomatous polyposis (FAP). *Hum. Mutat.* 28: 985-992.
- Cleaver, J.E., Hefner, E., Laposa, R.R., Karentz, D. and Marti, T. 2007. Cockayne syndrome exhibits dysregulation of p21 and other gene products that may be independent of transcription-coupled repair. *Neuroscience* 145: 1300-1308.

## CHROMOSOMAL LOCATION

Genetic locus: ISOC1 (human) mapping to 5q23.3; Isoc1 (mouse) mapping to 18 D3.

## SOURCE

ISOC1 (K-14) is an affinity purified goat polyclonal antibody raised against a peptide mapping within an internal region of ISOC1 of human origin.

## PRODUCT

Each vial contains 200 µg IgG in 1.0 ml of PBS with < 0.1% sodium azide and 0.1% gelatin.

Blocking peptide available for competition studies, sc-138029 P, (100 µg peptide in 0.5 ml PBS containing < 0.1% sodium azide and 0.2% BSA).

## STORAGE

Store at 4° C, **\*\*DO NOT FREEZE\*\***. Stable for one year from the date of shipment. Non-hazardous. No MSDS required.

## APPLICATIONS

ISOC1 (K-14) is recommended for detection of ISOC1 of mouse, rat and human origin by Western Blotting (starting dilution 1:200, dilution range 1:100-1:1000), immunoprecipitation [1-2 µg per 100-500 µg of total protein (1 ml of cell lysate)], immunofluorescence (starting dilution 1:50, dilution range 1:50-1:500) and solid phase ELISA (starting dilution 1:30, dilution range 1:30-1:3000); non cross-reactive with ISOC2.

ISOC1 (K-14) is also recommended for detection of ISOC1 in additional species, including equine, bovine, porcine and avian.

Suitable for use as control antibody for ISOC1 siRNA (h): sc-91600, ISOC1 siRNA (m): sc-146300, ISOC1 shRNA Plasmid (h): sc-91600-SH, ISOC1 shRNA Plasmid (m): sc-146300-SH, ISOC1 shRNA (h) Lentiviral Particles: sc-91600-V and ISOC1 shRNA (m) Lentiviral Particles: sc-146300-V.

Molecular Weight (predicted) of ISOC1: 32 kDa.

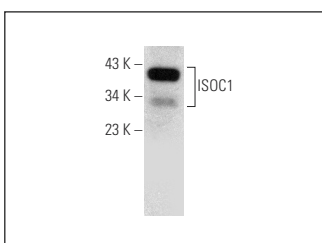
Molecular Weight (observed) of ISOC1: 36-40 kDa.

Positive Controls: ISOC1 (m): 293T Lysate: sc-121122 or mouse liver extract: sc-2256.

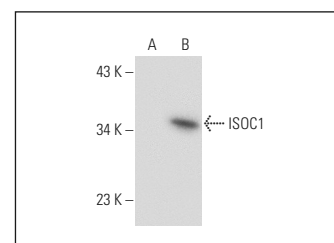
## RECOMMENDED SECONDARY REAGENTS

To ensure optimal results, the following support (secondary) reagents are recommended: 1) Western Blotting: use donkey anti-goat IgG-HRP: sc-2020 (dilution range: 1:2000-1:100,000) or Cruz Marker™ compatible donkey anti-goat IgG-HRP: sc-2033 (dilution range: 1:2000-1:5000), Cruz Marker™ Molecular Weight Standards: sc-2035, TBS Blotto A Blocking Reagent: sc-2333 and Western Blotting Luminol Reagent: sc-2048. 2) Immunoprecipitation: use Protein A/G PLUS-Agarose: sc-2003 (0.5 ml agarose/2.0 ml). 3) Immunofluorescence: use donkey anti-goat IgG-FITC: sc-2024 (dilution range: 1:100-1:400) or donkey anti-goat IgG-TR: sc-2783 (dilution range: 1:100-1:400) with UltraCruz™ Mounting Medium: sc-24941.

## DATA



ISOC1 (K-14): sc-138029. Western blot analysis of ISOC1 expression in mouse liver tissue extract.



ISOC1 (K-14): sc-138029. Western blot analysis of ISOC1 expression in non-transfected: sc-117752 (A) and mouse ISOC1 transfected: sc-121122 (B) 293T whole cell lysates.

## RESEARCH USE

For research use only, not for use in diagnostic procedures.

## PROTOCOLS

See our web site at [www.scbt.com](http://www.scbt.com) or our catalog for detailed protocols and support products.