

RRP15 (K-14): sc-138059

BACKGROUND

RRP15 (ribosomal RNA processing 15), also known as KIAA0507, is a 282 amino acid protein that localizes to the nucleus and may be involved in the modification and processing of precursor rRNA, possibly playing a role in maturation of the 60S ribosomal subunit. The gene encoding RRP15 maps to human chromosome 1, which spans 260 million base pairs, contains over 3,000 genes and comprises nearly 8% of the human genome. Chromosome 1 houses a large number of disease-associated genes, including those that are involved in familial adenomatous polyposis, Stickler syndrome, Parkinson's disease, Gaucher disease, schizophrenia and Usher syndrome. Aberrations in chromosome 1 are found in a variety of cancers, including head and neck cancer, malignant melanoma and multiple myeloma.

REFERENCES

- Lai, C.H., Chou, C.Y., Ch'ang, L.Y., Liu, C.S. and Lin, W. 2000. Identification of novel human genes evolutionarily conserved in *Caenorhabditis elegans* by comparative proteomics. *Genome Res.* 10: 703-713.
- Andersen, J.S., Lyon, C.E., Fox, A.H., Leung, A.K., Lam, Y.W., Steen, H., Mann, M. and Lamond, A.I. 2002. Directed proteomic analysis of the human nucleolus. *Curr. Biol.* 12: 1-11.
- De Marchis, M.L., Giorgi, A., Schininà, M.E., Bozzoni, I. and Fatica, A. 2005. RRP15p, a novel component of pre-ribosomal particles required for 60S ribosome subunit maturation. *RNA* 11: 495-502.
- Zemp, I. and Kutay, U. 2007. Nuclear export and cytoplasmic maturation of ribosomal subunits. *FEBS Lett.* 581: 2783-2793.
- Online Mendelian Inheritance in Man, OMIM™. 2007. Johns Hopkins University, Baltimore, MD. MIM Number: 611193. World Wide Web URL: <http://www.ncbi.nlm.nih.gov/omim/>
- Henras, A.K., Soudet, J., Gerus, M., Lebaron, S., Caizergues-Ferrer, M., Mougou, A. and Henry, Y. 2008. The post-transcriptional steps of eukaryotic ribosome biogenesis. *Cell. Mol. Life Sci.* 65: 2334-2359.

CHROMOSOMAL LOCATION

Genetic locus: RRP15 (human) mapping to 1q41; Rrp15 (mouse) mapping to 1 H5.

SOURCE

RRP15 (K-14) is an affinity purified goat polyclonal antibody raised against a peptide mapping within an internal region of RRP15 of human origin.

PRODUCT

Each vial contains 200 µg IgG in 1.0 ml of PBS with < 0.1% sodium azide and 0.1% gelatin.

Blocking peptide available for competition studies, sc-138059 P, (100 µg peptide in 0.5 ml PBS containing < 0.1% sodium azide and 0.2% BSA).

STORAGE

Store at 4° C, ****DO NOT FREEZE****. Stable for one year from the date of shipment. Non-hazardous. No MSDS required.

APPLICATIONS

RRP15 (K-14) is recommended for detection of RRP15 of mouse, rat and human origin by Western Blotting (starting dilution 1:200, dilution range 1:100-1:1000), immunoprecipitation [1-2 µg per 100-500 µg of total protein (1 ml of cell lysate)], immunofluorescence (starting dilution 1:50, dilution range 1:50-1:500) and solid phase ELISA (starting dilution 1:30, dilution range 1:30-1:3000); non cross-reactive with other RRP family members.

RRP15 (K-14) is also recommended for detection of RRP15 in additional species, including equine, canine, bovine and porcine.

Suitable for use as control antibody for RRP15 siRNA (h): sc-88523, RRP15 siRNA (m): sc-153130, RRP15 shRNA Plasmid (h): sc-88523-SH, RRP15 shRNA Plasmid (m): sc-153130-SH, RRP15 shRNA (h) Lentiviral Particles: sc-88523-V and RRP15 shRNA (m) Lentiviral Particles: sc-153130-V.

Molecular Weight (predicted) of RRP15: 31 kDa.

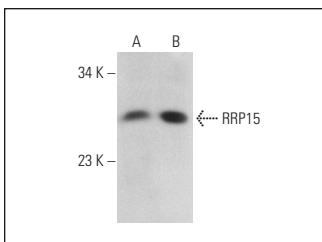
Molecular Weight (observed) of RRP15: 28 kDa.

Positive Controls: HeLa nuclear extract: sc-2120, NIH/3T3 nuclear extract: sc-2138 or mouse lung extract: sc-2390.

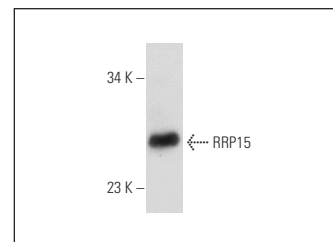
RECOMMENDED SECONDARY REAGENTS

To ensure optimal results, the following support (secondary) reagents are recommended: 1) Western Blotting: use donkey anti-goat IgG-HRP: sc-2020 (dilution range: 1:2000-1:100,000) or Cruz Marker™ compatible donkey anti-goat IgG-HRP: sc-2033 (dilution range: 1:2000-1:5000), Cruz Marker™ Molecular Weight Standards: sc-2035, TBS Blotto A Blocking Reagent: sc-2333 and Western Blotting Luminol Reagent: sc-2048. 2) Immunoprecipitation: use Protein A/G PLUS-Agarose: sc-2003 (0.5 ml agarose/2.0 ml). 3) Immunofluorescence: use donkey anti-goat IgG-FITC: sc-2024 (dilution range: 1:100-1:400) or donkey anti-goat IgG-TR: sc-2783 (dilution range: 1:100-1:400) with UltraCruz™ Mounting Medium: sc-24941.

DATA



RRP15 (K-14): sc-138059. Western blot analysis of RRP15 expression in HeLa (A) and NIH/3T3 (B) nuclear extracts.



RRP15 (K-14): sc-138059. Western blot analysis of RRP15 expression in mouse lung tissue extract.

RESEARCH USE

For research use only, not for use in diagnostic procedures.

PROTOCOLS

See our web site at www.scbt.com or our catalog for detailed protocols and support products.