

C1qL (C-16): sc-13811

BACKGROUND

C1q is part of the C1 enzyme complex, which activates the serum complement system. The residues of the globular domain in C1q share homology with several other secreted and membrane-bound collagen or collagen-like proteins, including pre-cerebellin and collagen types VIII and X, as well as the human and mouse genes encoding Apm1/BPB80 and AdipoQ/ACRP30, respectively. These various C1q-related proteins are found in adipose serum, corneal endothelium chondrocytes and cerebral Purkinje cells. C1q-related factor (C1qL1) is a polypeptide with a hydrophobic signal sequence, a collagenous region, and a globular domain at the carboxy-terminus, which shares homology to the C1q globular domain. C1qL1 transcripts are most abundant in areas of the nervous system that are associated with motor function, including cerebral Purkinje cells, the pons, the accessory olivary nucleus, and the red nucleus. The similarity of mouse C1qL1 to human C1qL1 suggests a conserved and important role for the protein. In humans, the gene encoding C1qL1 maps to chromosome 17q21.31.

REFERENCES

1. Yamaguchi, M., Benya, P.D., van der Rest, M. and Ninomiya, Y. 1989. the cloning and sequencing of α 1(VIII) collagen cDNAs demonstrate that type VIII collaen is a short chain collagen that contains triple-helical and carboxy-terminal non-triple-helical domains similar to those of type X collagen, *J. Biol. Chem.* 264: 16022-16029.
2. Seller, G.C., Blake, D.J. and Reid, K.B.M. 1991. Characterization and organization of the genes encoding the A-, B-, and C-chains of human complement subcomponent C1q. *Biochem. J.* 274: 481-490.
3. Brass, A., Kadler, K.E., Thomas, T., Grant, M.E. and Boot-Handford, R.P. 1992. The fibrillar collagen, collagen VIII, collagen X and the C1q complement proteins share a similar domain in their C-terminal non-collagenous regions. *FEBS Lett.* 303: 126-128.
4. Scherer, P.E., Williams, S., Fogliano, M., Baldini, G. and Lodish, H.F. 1995. A novel serum protein similar to C1q, produced exclusively in adipocytes. *J. Biol. Chem.* 270: 26746-26749.
5. Berube, N.G., Swanson, X.H., Bertram, M.J., Kittle, J.D., Didenko, V., Baskin, D.S., Smith, J.R. and Pereira-Smith, O.M. 1999. Cloning and characterization of CRG, a novel C1q-Related Factor, expressed in areas of the brain involved in motor function. *Mol. Brain Res.* 63: 233-240.

SOURCE

C1qL (C-16) is an affinity purified goat polyclonal antibody raised against a peptide mapping at the C-terminus of C1qL1 of human origin.

PRODUCT

Each vial contains 200 μ g IgG in 1.0 ml of PBS with < 0.1% sodium azide and 0.1% gelatin.

Blocking peptide available for competition studies, sc-13811 P, (100 μ g peptide in 0.5 ml PBS containing < 0.1% sodium azide and 0.2% BSA).

RESEARCH USE

For research use only, not for use in diagnostic procedures.

APPLICATIONS

C1qL (C-16) is recommended for detection of C1qL1, C1qL2, C1qL3 and C1qL4 of mouse, rat and human origin by Western Blotting (starting dilution 1:200, dilution range 1:100-1:1000), immunoprecipitation [1-2 μ g per 100-500 μ g of total protein (1 ml of cell lysate)], immunofluorescence (starting dilution 1:50, dilution range 1:50-1:500) and solid phase ELISA (starting dilution 1:30, dilution range 1:30-1:3000).

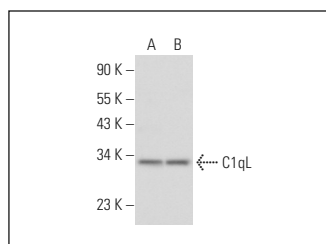
C1qL (C-16) is also recommended for detection of C1qL1, C1qL2, C1qL3 and C1qL4 in additional species, including equine, canine, bovine, porcine and avian.

Positive Controls: Jurkat whole cell lysate: sc-2204 or K-562 whole cell lysate: sc-2203.

RECOMMENDED SECONDARY REAGENTS

To ensure optimal results, the following support (secondary) reagents are recommended: 1) Western Blotting: use donkey anti-goat IgG-HRP: sc-2020 (dilution range: 1:2000-1:100,000) or Cruz Marker™ compatible donkey anti-goat IgG-HRP: sc-2033 (dilution range: 1:2000-1:5000), Cruz Marker™ Molecular Weight Standards: sc-2035, TBS Blotto A Blocking Reagent: sc-2333 and Western Blotting Luminol Reagent: sc-2048. 2) Immunoprecipitation: use Protein A/G PLUS-Agarose: sc-2003 (0.5 ml agarose/2.0 ml). 3) Immunofluorescence: use donkey anti-goat IgG-FITC: sc-2024 (dilution range: 1:100-1:400) or donkey anti-goat IgG-TR: sc-2783 (dilution range: 1:100-1:400) with UltraCruz™ Mounting Medium: sc-24941.

DATA



C1qL (C-16) : sc-13811. Western blot analysis of C1qL expression in Jurkat (A) and K-562 (B) whole cell lysates.

STORAGE

Store at 4° C, ****DO NOT FREEZE****. Stable for one year from the date of shipment. Non-hazardous. No MSDS required.

PROTOCOLS

See our web site at www.scbt.com or our catalog for detailed protocols and support products.