

apoLD1 (E-14): sc-138129

BACKGROUND

ApoLD1 (apolipoprotein L domain containing 1), also known as VERGE (vascular early response gene protein), is a 279 amino acid multi-pass membrane protein that belongs to the apolipoprotein L family and exists as 2 alternatively spliced isoforms. Encoded by a gene that maps to human chromosome 12p13.1, apoLD1 functions as an endothelial cell early responder and may assist in regulation of endothelial cell signaling and vascular function. ApoLD1 may also be linked to angiogenesis and activity-dependent brain vasculature changes, and may affect blood-brain permeability. Expressed in neonatal dermal microvascular endothelial cells, apoLD1 is induced by hypoxia, focal ischemia, TNF α and FGF-2, and is likely synthesized and degraded quickly. ApoLD1 exhibits sensitivity to PKC stimulation and phorbol myristate acetate (PMA) exposure, which results in rapid and transient actin cytoskeleton remodeling, suggesting apoLD1 assists in actin cytoskeleton reorganization and vascular permeability.

REFERENCES

1. Regard, J.B., Scheek, S., Borbiev, T., Lanahan, A.A., Schneider, A., Demetriades, A.M., Hiemisch, H., Barnes, C.A., Verin, A.D. and Worley, P.F. 2004. Verge: a novel vascular early response gene. *J. Neurosci.* 24: 4092-4103.
2. Tsai, M.S., Hwang, S.M., Chen, K.D., Lee, Y.S., Hsu, L.W., Chang, Y.J., Wang, C.N., Peng, H.H., Chang, Y.L., Chao, A.S., Chang, S.D., Lee, K.D., Wang, T.H., Wang, H.S. and Soong, Y.K. 2007. Functional network analysis of the transcriptomes of mesenchymal stem cells derived from amniotic fluid, amniotic membrane, cord blood, and bone marrow. *Stem Cells.* 25: 2511-2523.
3. Le Toriell, E., Despouy, G., Pierron, G., Gaye, N., Joiner, M., Bellanger, D., Vincent-Salomon, A. and Stern, M.H. 2008. Haploinsufficiency of CDKN1B contributes to leukemogenesis in T-cell prolymphocytic leukemia. *Blood* 111: 2321-2328.
4. Hoek, K.S., Schlegel, N.C., Eichhoff, O.M., Widmer, D.S., Praetorius, C., Einarsson, S.O., Valgeirsdottir, S., Bergsteinsdottir, K., Schepsky, A., Dummer, R. and Steingrimsdottir, E. 2008. Novel MITF targets identified using a two-step DNA microarray strategy. *Pigment Cell Melanoma Res.* 21: 665-676.
5. Cheung, H.H., Lee, T.L., Davis, A.J., Taft, D.H., Rennert, O.M. and Chan, W.Y. 2010. Genome-wide DNA methylation profiling reveals novel epigenetically regulated genes and non-coding RNAs in human testicular cancer. *Br. J. Cancer* 102: 419-427.
6. Wolterink, S., Moldenhauer, G., Fogel, M., Kiefel, H., Pfeifer, M., Lüttgau, S., Gouveia, R., Costa, J., Endell, J., Moebius, U. and Altevogt, P. 2010. Therapeutic antibodies to human L1CAM: functional characterization and application in a mouse model for ovarian carcinoma. *Cancer Res.* 70: 2504-2515.
7. Simonsen, M.L., Alessio, H.M., White, P., Newsom, D.L. and Hagerman, A.E. 2010. Acute physical activity effects on cardiac gene expression. *Exp. Physiol.* 95: 1071-1080.

CHROMOSOMAL LOCATION

Genetic locus: APOLD1 (human) mapping to 12p13.1; Apold1 (mouse) mapping to 6 G1.

SOURCE

apoLD1 (E-14) is an affinity purified goat polyclonal antibody raised against a peptide mapping near the N-terminus of apoLD1 of human origin.

PRODUCT

Each vial contains 200 μ g IgG in 1.0 ml of PBS with < 0.1% sodium azide and 0.1% gelatin.

Blocking peptide available for competition studies, sc-138129 P, (100 μ g peptide in 0.5 ml PBS containing < 0.1% sodium azide and 0.2% BSA).

APPLICATIONS

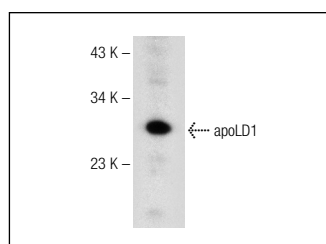
apoLD1 (E-14) is recommended for detection of apoLD1 of mouse, rat and human origin by Western Blotting (starting dilution 1:200, dilution range 1:100-1:1000), immunoprecipitation [1-2 μ g per 100-500 μ g of total protein (1 ml of cell lysate)], immunofluorescence (starting dilution 1:50, dilution range 1:50-1:500) and solid phase ELISA (starting dilution 1:30, dilution range 1:30-1:3000).

Suitable for use as control antibody for apoLD1 siRNA (h): sc-96047, apoLD1 siRNA (m): sc-141173, apoLD1 shRNA Plasmid (h): sc-96047-SH, apoLD1 shRNA Plasmid (m): sc-141173-SH, apoLD1 shRNA (h) Lentiviral Particles: sc-96047-V and apoLD1 shRNA (m) Lentiviral Particles: sc-141173-V.

Molecular Weight of apoLD1: 31 kDa.

Positive Controls: Jurkat whole cell lysate: sc-2204.

DATA



apoLD1 (E-14): sc-138129. Western blot analysis of apoLD1 expression in Jurkat whole cell lysate.

STORAGE

Store at 4° C, ****DO NOT FREEZE****. Stable for one year from the date of shipment. Non-hazardous. No MSDS required.

RESEARCH USE

For research use only, not for use in diagnostic procedures.