

C15orf39 (C-12): sc-138158

BACKGROUND

Encoding more than 700 genes, chromosome 15 is made up of approximately 106 million base pairs and is about 3% of the human genome. Angelman and Prader-Willi syndromes are associated with loss of function or deletion of genes in the 15q11-q13 region. In the case of Angelman syndrome, this loss is due to inactivity of the maternal 15q11-q13-encoded UBE3A gene in the brain by either chromosomal deletion or mutation. In cases of Prader-Willi syndrome, there is a partial or complete deletion of this region from the paternal copy of chromosome 15. Tay-Sachs disease is a lethal disorder associated with mutations of the HEXA gene, which is encoded by chromosome 15. Marfan syndrome is associated with chromosome 15 through the FBN1 gene. The C15orf39 gene product has been provisionally designated C15orf39 pending further characterization.

REFERENCES

- Cachón-González, M.B., et al. 2006. Effective gene therapy in an authentic model of Tay-Sachs-related diseases. *Proc. Natl. Acad. Sci. USA* 103: 10373-10378.
- Zody, M.C., et al. 2006. Analysis of the DNA sequence and duplication history of human chromosome 15. *Nature* 440: 671-675.
- Diene, G., et al. 2007. The Prader-Willi syndrome. *Ann. Endocrinol.* 68: 129-137.
- Lalande, M., et al. 2007. Molecular epigenetics of Angelman syndrome. *Cell. Mol. Life Sci.* 64: 947-960.
- Maegawa, G.H., et al. 2007. Pyrimethamine as a potential pharmacological chaperone for late-onset forms of GM2 gangliosidosis. *J. Biol. Chem.* 282: 9150-9161.
- Makoff, A.J., et al. 2007. Detailed analysis of 15q11-q14 sequence corrects errors and gaps in the public access sequence to fully reveal large segmental duplications at breakpoints for Prader-Willi, Angelman, and inv dup(15) syndromes. *Genome Biol.* 8: R114.
- Ramirez, F., et al. 2007. Fibrillin-rich microfibrils: Structural determinants of morphogenetic and homeostatic events. *J. Cell. Physiol.* 213: 326-330.
- ten Dijke, P., et al. 2007. Extracellular control of TGF β signalling in vascular development and disease. *Nat. Rev. Mol. Cell Biol.* 8: 857-869.

CHROMOSOMAL LOCATION

Genetic locus: C15orf39 (human) mapping to 15q24.2.

SOURCE

C15orf39 (C-12) is an affinity purified goat polyclonal antibody raised against a peptide mapping at the C-terminus of C15orf39 of human origin.

PRODUCT

Each vial contains 200 μ g IgG in 1.0 ml of PBS with < 0.1% sodium azide and 0.1% gelatin.

Blocking peptide available for competition studies, sc-138158 P, (100 μ g peptide in 0.5 ml PBS containing < 0.1% sodium azide and 0.2% BSA).

APPLICATIONS

C15orf39 (C-12) is recommended for detection of C15orf39 of human origin by Western Blotting (starting dilution 1:200, dilution range 1:100-1:1000), immunoprecipitation [1-2 μ g per 100-500 μ g of total protein (1 ml of cell lysate)], immunofluorescence (starting dilution 1:50, dilution range 1:50-1:500) and solid phase ELISA (starting dilution 1:30, dilution range 1:30-1:3000); non cross-reactive with other C15orf family members.

Suitable for use as control antibody for C15orf39 siRNA (h): sc-90303, C15orf39 shRNA Plasmid (h): sc-90303-SH and C15orf39 shRNA (h) Lentiviral Particles: sc-90303-V.

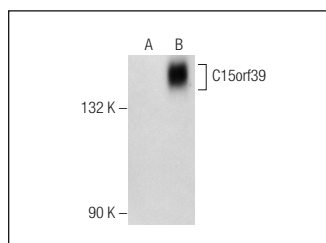
Molecular Weight of C15orf39 isoforms: 111/99/14 kDa.

Positive Controls: C15orf39 (h): 293T Lysate: sc-111104.

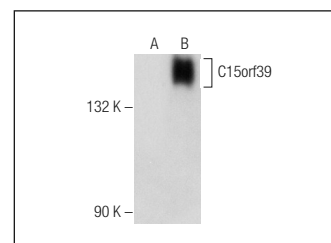
RECOMMENDED SECONDARY REAGENTS

To ensure optimal results, the following support (secondary) reagents are recommended: 1) Western Blotting: use donkey anti-goat IgG-HRP: sc-2020 (dilution range: 1:2000-1:100,000) or Cruz Marker™ compatible donkey anti-goat IgG-HRP: sc-2033 (dilution range: 1:2000-1:5000), Cruz Marker™ Molecular Weight Standards: sc-2035, TBS Blotto A Blocking Reagent: sc-2333 and Western Blotting Luminol Reagent: sc-2048. 2) Immunoprecipitation: use Protein A/G PLUS-Agarose: sc-2003 (0.5 ml agarose/2.0 ml). 3) Immunofluorescence: use donkey anti-goat IgG-FITC: sc-2024 (dilution range: 1:100-1:400) or donkey anti-goat IgG-TR: sc-2783 (dilution range: 1:100-1:400) with UltraCruz™ Mounting Medium: sc-24941.

DATA



C15orf39 (C-12): sc-138158. Western blot analysis of C15orf39 expression in non-transfected: sc-117752 (A) and human C15orf39 transfected: sc-111104 (B) 293T whole cell lysates.



C15orf39 (C-12): sc-138158. Western blot analysis of C15orf39 expression in non-transfected: sc-117752 (A) and human C15orf39 transfected: sc-111977 (B) 293T whole cell lysates.

STORAGE

Store at 4° C, **DO NOT FREEZE**. Stable for one year from the date of shipment. Non-hazardous. No MSDS required.

RESEARCH USE

For research use only, not for use in diagnostic procedures.

PROTOCOLS

See our web site at www.scbt.com or our catalog for detailed protocols and support products.