

Dcun1D4 (N-12): sc-138240

BACKGROUND

The DCN1-like protein family is comprised of Dcun1D1, Dcun1D2, Dcun1D3, Dcun1D4 and Dcun1D5. The founding member, Dcun1D1, is involved in the malignant transformation of squamous cell lineage. Dcun1D4, (defective in cullin neddylation protein 1-like protein 4 or DCN1-like protein 4), also designated KIAA0276, exists as two isoforms as a result of alternative splicing and contains one DCUN1 domain. The gene encoding Dcun1D4 maps to chromosome 4, which houses nearly 6% of the human genome and has the largest gene deserts (regions of the genome with no protein encoding genes) of all of the human chromosomes. Defects in some of the genes located on chromosome 4 are associated with Huntington's disease, Ellis-van Creveld syndrome, methylmalonic acidemia and polycystic kidney disease.

REFERENCES

- Chen, C.S., et al. 1995. A mapping study of 13 genes on human chromosome bands 4q11→q25. *Cytogenet. Cell Genet.* 69: 260-265.
- Hillier, L.W., et al. 2003. The DNA sequence of human chromosome 7. *Nature* 424: 157-164.
- Cowan, C.M., et al. 2006. Selective neuronal degeneration in Huntington's disease. *Curr. Top. Dev. Biol.* 75: 25-71.
- Liu, S., et al. 2007. Molecular cloning and expression analysis of a new gene for short-chain dehydrogenase/reductase 9. *Acta Biochim. Pol.* 54: 213-218.
- Versteegh, F.G., et al. 2007. Growth hormone analysis and treatment in Ellis-van Creveld syndrome. *Am. J. Med. Genet. A* 143A: 2113-2121.
- Doherty, E.S., et al. 2007. Muenke syndrome (FGFR3-related craniosynostosis): expansion of the phenotype and review of the literature. *Am. J. Med. Genet. A* 143A: 3204-3215.
- Moe, M., et al. 2008. Gene expression profiles in liver of pigs with extreme high and low levels of androstenone. *BMC Vet. Res.* 4: 29.

CHROMOSOMAL LOCATION

Genetic locus: DCUN1D4 (human) mapping to 4q12; Dcun1d4 (mouse) mapping to 5 C3.3.

SOURCE

Dcun1D4 (N-12) is an affinity purified goat polyclonal antibody raised against a peptide mapping near the N-terminus of Dcun1D4 of human origin.

PRODUCT

Each vial contains 200 µg IgG in 1.0 ml of PBS with < 0.1% sodium azide and 0.1% gelatin.

Blocking peptide available for competition studies, sc-138240 P, (100 µg peptide in 0.5 ml PBS containing < 0.1% sodium azide and 0.2% BSA).

STORAGE

Store at 4° C, **DO NOT FREEZE**. Stable for one year from the date of shipment. Non-hazardous. No MSDS required.

APPLICATIONS

Dcun1D4 (N-12) is recommended for detection of Dcun1D4 of mouse, rat and human origin by Western Blotting (starting dilution 1:200, dilution range 1:100-1:1000), immunoprecipitation [1-2 µg per 100-500 µg of total protein (1 ml of cell lysate)], immunofluorescence (starting dilution 1:50, dilution range 1:50-1:500) and solid phase ELISA (starting dilution 1:30, dilution range 1:30-1:3000); non cross-reactive with other Dcun1D family members.

Dcun1D4 (N-12) is also recommended for detection of Dcun1D4 in additional species, including canine, bovine, porcine and avian.

Suitable for use as control antibody for Dcun1D4 siRNA (h): sc-89241, Dcun1D4 siRNA (m): sc-142910, Dcun1D4 shRNA Plasmid (h): sc-89241-SH, Dcun1D4 shRNA Plasmid (m): sc-142910-SH, Dcun1D4 shRNA (h) Lentiviral Particles: sc-89241-V and Dcun1D4 shRNA (m) Lentiviral Particles: sc-142910-V.

Molecular Weight (predicted) of Dcun1D4 isoforms 1/2: 34/30 kDa

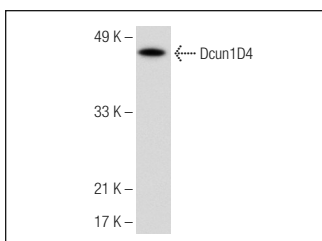
Molecular Weight (observed) of Dcun1D4: 44 kDa.

Positive Controls: HeLa whole cell lysate: sc-2200 or TT whole cell lysate.

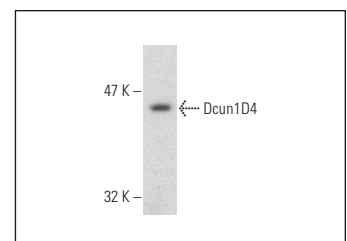
RECOMMENDED SECONDARY REAGENTS

To ensure optimal results, the following support (secondary) reagents are recommended: 1) Western Blotting: use donkey anti-goat IgG-HRP: sc-2020 (dilution range: 1:2000-1:100,000) or Cruz Marker™ compatible donkey anti-goat IgG-HRP: sc-2033 (dilution range: 1:2000-1:5000), Cruz Marker™ Molecular Weight Standards: sc-2035, TBS Blotto A Blocking Reagent: sc-2333 and Western Blotting Luminol Reagent: sc-2048. 2) Immunoprecipitation: use Protein A/G PLUS-Agarose: sc-2003 (0.5 ml agarose/2.0 ml). 3) Immunofluorescence: use donkey anti-goat IgG-FITC: sc-2024 (dilution range: 1:100-1:400) or donkey anti-goat IgG-TR: sc-2783 (dilution range: 1:100-1:400) with UltraCruz™ Mounting Medium: sc-24941.

DATA



Dcun1D4 (N-12): sc-138240. Western blot analysis of Dcun1D4 expression in HeLa whole cell lysate.



Dcun1D4 (N-12): sc-138240. Western blot analysis of Dcun1D4 expression in TT whole cell lysate.

RESEARCH USE

For research use only, not for use in diagnostic procedures.

PROTOCOLS

See our web site at www.scbt.com or our catalog for detailed protocols and support products.