

ENDOD1 (C-13): sc-138257

BACKGROUND

ENDOD1 (endonuclease domain-containing 1 protein) is a 500 amino acid secreted protein that belongs to the DNA/RNA non-specific endonuclease family. ENDOD1 is thought to act as a DNase and an RNase. The gene that encodes ENDOD1 maps to human chromosome 11, which comprises approximately 4% of human genomic DNA and is considered a gene and disease association dense chromosome. The chromosome 11 encoded Atm gene is important for regulation of cell cycle arrest and apoptosis following double strand DNA breaks. Atm mutation leads to the disorder known as ataxia-telangiectasia. The blood disorders Sickle cell anemia and thalassemia are caused by HBB gene mutations, while Wilms' tumors, WAGR syndrome and Denys-Drash syndrome are associated with mutations of the WT1 gene. Jervell and Lange-Nielsen syndrome, Jacobsen syndrome, Niemann-Pick disease, hereditary angioedema and Smith-Lemli-Opitz syndrome are also associated with defects in chromosome 11-encoded genes.

REFERENCES

1. Fabiani, J.E., Avigliano, A., Dupont, J.C. and Fabiana, J.E. 2000. Hereditary angioedema. Long-term follow-up of 88 patients. Experience of the Argentine Allergy and Immunology Institute. *Allergol. Immunopathol.* 28: 267-271.
2. Jira, P.E., Waterham, H.R., Wanders, R.J., Smeitink, J.A., Sengers, R.C. and Wevers, R.A. 2003. Smith-Lemli-Opitz syndrome and the DHCR7 gene. *Ann. Hum. Genet.* 67: 269-280.
3. Schuchman, E.H. 2007. The pathogenesis and treatment of acid sphingomyelinase-deficient Niemann-Pick disease. *J. Inherit. Metab. Dis.* 30: 654-663.

CHROMOSOMAL LOCATION

Genetic locus: ENDOD1 (human) mapping to 11q21; Endod1 (mouse) mapping to 9 A1.

SOURCE

ENDOD1 (C-13) is an affinity purified rabbit polyclonal antibody raised against a peptide mapping at the C-terminus of ENDOD1 of human origin.

PRODUCT

Each vial contains 100 µg IgG in 1.0 ml of PBS with < 0.1% sodium azide and 0.1% gelatin.

Blocking peptide available for competition studies, sc-138257 P, (100 µg peptide in 0.5 ml PBS containing < 0.1% sodium azide and 0.2% BSA).

Available as TransCruz reagent for Gel Supershift and ChIP applications, sc-138257 X, 200 µg/0.1 ml.

STORAGE

Store at 4° C, **DO NOT FREEZE**. Stable for one year from the date of shipment. Non-hazardous. No MSDS required.

APPLICATIONS

ENDOD1 (C-13) is recommended for detection of ENDOD1 of mouse, rat and human origin by Western Blotting (starting dilution 1:100, dilution range 1:50-1:500), immunoprecipitation [1-2 µg per 100-500 µg of total protein (1 ml of cell lysate)], immunofluorescence (starting dilution 1:25, dilution range 1:25-1:250) and solid phase ELISA (starting dilution 1:30, dilution range 1:30-1:3000).

Suitable for use as control antibody for ENDOD1 siRNA (h): sc-96816, ENDOD1 siRNA (m): sc-144650, ENDOD1 shRNA Plasmid (h): sc-96816-SH, ENDOD1 shRNA Plasmid (m): sc-144650-SH, ENDOD1 shRNA (h) Lentiviral Particles: sc-96816-V and ENDOD1 shRNA (m) Lentiviral Particles: sc-144650-V.

ENDOD1 (C-13) X TransCruz antibody is recommended for Gel Supershift and ChIP applications.

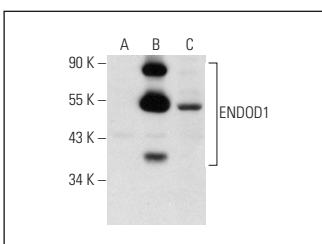
Molecular Weight of ENDOD1: 55 kDa.

Positive Controls: ENDOD1 (h): 293T Lysate: sc-117446 or LNCaP cell lysate: sc-2231.

RECOMMENDED SECONDARY REAGENTS

To ensure optimal results, the following support (secondary) reagents are recommended: 1) Western Blotting: use goat anti-rabbit IgG-HRP: sc-2004 (dilution range: 1:2000-1:100,000) or Cruz Marker™ compatible goat anti-rabbit IgG-HRP: sc-2030 (dilution range: 1:2000-1:5000), Cruz Marker™ Molecular Weight Standards: sc-2035, TBS Blotto A Blocking Reagent: sc-2333 and Western Blotting Luminol Reagent: sc-2048. 2) Immunoprecipitation: use Protein A/G PLUS-Agarose: sc-2003 (0.5 ml agarose/2.0 ml). 3) Immunofluorescence: use goat anti-rabbit IgG-FITC: sc-2012 (dilution range: 1:100-1:400) or goat anti-rabbit IgG-TR: sc-2780 (dilution range: 1:100-1:400) with UltraCruz™ Mounting Medium: sc-24941.

DATA



ENDOD1 (C-13): sc-138257. Western blot analysis of ENDOD1 expression in non-transfected 293T: sc-117752 (A), human ENDOD1 transfected 293T: sc-117446 (B) and LNCaP (C) whole cell lysates.

RESEARCH USE

For research use only, not for use in diagnostic procedures.

PROTOCOLS

See our web site at www.scbt.com or our catalog for detailed protocols and support products.