

FBL13 (G-12): sc-138266

BACKGROUND

FBL13 (F-box/LRR-repeat protein 13) is a 735 amino acid protein encoded by the human gene FBXL13. FBL13 contains one 40 amino acid F-box region, making it a member of the F-box family. FBL13 also contains eight LRR (leucine-rich) repeats. F-box proteins are critical components of the SCF (Skp1-CUL-1-F-box protein) type E3 ubiquitin ligase complex and are involved in substrate recognition and recruitment for ubiquitination. F-box proteins are members of a large family that regulates cell cycle, immune response, signaling cascades and developmental programs by targeting proteins, such as cyclins, cyclin-dependent kinase inhibitors, I κ B- α and β -catenin, for degradation by the proteasome after ubiquitination. FBL13 exists as four isoforms as a result of alternative splicing events.

REFERENCES

1. Winston, J.T., et al. 1999. The SCF β -TrCP-ubiquitin ligase complex associates specifically with phosphorylated destruction motifs in I κ B- α and β -catenin and stimulates I κ B- α ubiquitination *in vitro*. *Genes Dev.* 13: 270-283.
2. Cenciarelli, C., et al. 1999. Identification of a family of human F-box proteins. *Curr. Biol.* 9: 1177-1179.
3. Winston, J.T., et al. 1999. A family of mammalian F-box proteins. *Curr. Biol.* 9: 1180-1182.
4. Craig, K.L. and Tyers, M. 1999. The F-box: a new motif for ubiquitin dependent proteolysis in cell cycle regulation and signal transduction. *Prog. Biophys. Mol. Biol.* 72: 299-328.
5. Ilyin, G.P., et al. 2000. cDNA cloning and expression analysis of new members of the mammalian F-box protein family. *Genomics* 67: 40-47.
6. Schulman, B.A. et al. 2000. Insights into SCF ubiquitin ligases from the structure of the Skp1-Skp2 complex. *Nature* 408: 381-386.
7. Ilyin, G.P., et al. 2002. A new subfamily of structurally related human F-box proteins. *Gene* 296: 11-20.

CHROMOSOMAL LOCATION

Genetic locus: FBXL13 (human) mapping to 7q22.1.

SOURCE

FBL13 (G-12) is an affinity purified goat polyclonal antibody raised against a peptide mapping near the C-terminus of FBL13 of human origin.

PRODUCT

Each vial contains 200 μ g IgG in 1.0 ml of PBS with < 0.1% sodium azide and 0.1% gelatin.

Blocking peptide available for competition studies, sc-138266 P, (100 μ g peptide in 0.5 ml PBS containing < 0.1% sodium azide and 0.2% BSA).

STORAGE

Store at 4° C, **DO NOT FREEZE**. Stable for one year from the date of shipment. Non-hazardous. No MSDS required.

APPLICATIONS

FBL13 (G-12) is recommended for detection of FBL13 isoforms 1-4 of human origin by Western Blotting (starting dilution 1:200, dilution range 1:100-1:1000), immunoprecipitation [1-2 μ g per 100-500 μ g of total protein (1 ml of cell lysate)], immunofluorescence (starting dilution 1:50, dilution range 1:50-1:500) and solid phase ELISA (starting dilution 1:30, dilution range 1:30-1:3000); non cross-reactive with other FBL family members.

Suitable for use as control antibody for FBL13 siRNA (h): sc-89440, FBL13 shRNA Plasmid (h): sc-89440-SH and FBL13 shRNA (h) Lentiviral Particles: sc-89440-V.

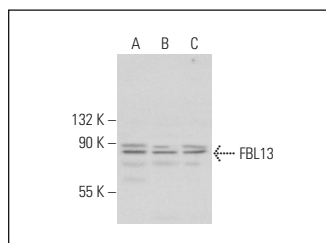
Molecular Weight of FBL13 isoforms 1/2/3/4: 84/81/79/53 kDa.

Positive Controls: HeLa whole cell lysate: sc-2200, Jurkat whole cell lysate: sc-2204 or K-562 whole cell lysate: sc-2203.

RECOMMENDED SECONDARY REAGENTS

To ensure optimal results, the following support (secondary) reagents are recommended: 1) Western Blotting: use donkey anti-goat IgG-HRP: sc-2020 (dilution range: 1:2000-1:100,000) or Cruz Marker™ compatible donkey anti-goat IgG-HRP: sc-2033 (dilution range: 1:2000-1:5000), Cruz Marker™ Molecular Weight Standards: sc-2035, TBS Blotto A Blocking Reagent: sc-2333 and Western Blotting Luminol Reagent: sc-2048. 2) Immunoprecipitation: use Protein A/G PLUS-Agarose: sc-2003 (0.5 ml agarose/2.0 ml). 3) Immunofluorescence: use donkey anti-goat IgG-FITC: sc-2024 (dilution range: 1:100-1:400) or donkey anti-goat IgG-TR: sc-2783 (dilution range: 1:100-1:400) with UltraCruz™ Mounting Medium: sc-24941.

DATA



FBL13 (G-12): sc-138266. Western blot analysis of FBL13 expression in HeLa (A), Jurkat (B) and K-562 (C) whole cell lysates.

RESEARCH USE

For research use only, not for use in diagnostic procedures.

PROTOCOLS

See our web site at www.scbt.com or our catalog for detailed protocols and support products.