

LRRC43 (G-14): sc-138405

BACKGROUND

The leucine-rich (LRR) repeat is a 20-30 amino acid motif that forms a hydrophobic α/β horseshoe fold, allowing it to accommodate several leucine residues within a tightly packed core. All LRR repeats contain a variable segment and a highly conserved segment, the latter of which accounts for 11 or 12 residues of the entire LRR motif. The primary function of these motifs is to provide a versatile structural framework to mediate the formation of protein-protein interactions. LRRs are present in a variety of proteins with diverse structure and function, including innate immunity and nervous system development. Several human diseases are associated with mutations in genes encoding LRR-containing proteins. LRRC43 (leucine rich repeat containing 43) is a 656 amino acid protein containing 4 LRR (leucine-rich) repeats and one LRRC43 domain. LRRC43 exists as three alternatively spliced isoforms and is encoded by a gene located on human chromosome 12q24.31.

REFERENCES

- Gomi, F., et al. 2000. Molecular cloning of a novel membrane glycoprotein, pal, specifically expressed in photoreceptor cells of the retina and containing leucine-rich repeat. *J. Neurosci.* 20: 3206-3213.
- Kobe, B. and Kajava, A.V. 2001. The leucine-rich repeat as a protein recognition motif. *Curr. Opin. Struct. Biol.* 11: 725-732.
- Hofman, P., et al. 2001. Lack of blood-brain barrier properties in microvessels of the prelaminar optic nerve head. *Invest. Ophthalmol. Vis. Sci.* 42: 895-901.
- Hughes, J.M., et al. 2004. Vascular leucocyte adhesion molecules unaltered in the human retina in diabetes. *Br. J. Ophthalmol.* 88: 566-572.
- Kuiper, E.J., et al. 2004. Differential expression of connective tissue growth factor in microglia and pericytes in the human diabetic retina. *Br. J. Ophthalmol.* 88: 1082-1087.
- Matsushima, N., et al. 2005. Structural analysis of leucine-rich-repeat variants in proteins associated with human diseases. *Cell. Mol. Life Sci.* 62: 2771-2791.

CHROMOSOMAL LOCATION

Genetic locus: LRRC43 (human) mapping to 12q24.31.

SOURCE

LRRC43 (G-14) is an affinity purified rabbit polyclonal antibody raised against a peptide mapping within an internal region of LRRC43 of human origin.

PRODUCT

Each vial contains 100 μ g IgG in 1.0 ml of PBS with < 0.1% sodium azide and 0.1% gelatin.

Blocking peptide available for competition studies, sc-138405 P, (100 μ g peptide in 0.5 ml PBS containing < 0.1% sodium azide and 0.2% BSA).

STORAGE

Store at 4° C, ****DO NOT FREEZE****. Stable for one year from the date of shipment. Non-hazardous. No MSDS required.

APPLICATIONS

LRRC43 (G-14) is recommended for detection of LRRC43 of human origin by Western Blotting (starting dilution 1:100, dilution range 1:50-1:500), immunoprecipitation [1-2 μ g per 100-500 μ g of total protein (1 ml of cell lysate)], immunofluorescence (starting dilution 1:25, dilution range 1:25-1:250) and solid phase ELISA (starting dilution 1:30, dilution range 1:30-1:3000); non cross-reactive with other LRRC family members.

Suitable for use as control antibody for LRRC43 siRNA (h): sc-95798, LRRC43 shRNA Plasmid (h): sc-95798-SH and LRRC43 shRNA (h) Lentiviral Particles: sc-95798-V.

Molecular Weight of LRRC43 isoforms: 73/52/58 kDa.

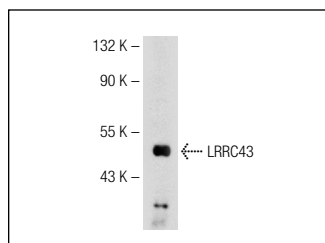
Molecular Weight (observed) of LRRC43: 50 kDa.

Positive Controls: NRK whole cell lysate: sc-364197, Caki-1 cell lysate: sc-2224 or A-431 whole cell lysate: sc-2201.

RECOMMENDED SECONDARY REAGENTS

To ensure optimal results, the following support (secondary) reagents are recommended: 1) Western Blotting: use goat anti-rabbit IgG-HRP: sc-2004 (dilution range: 1:2000-1:100,000) or Cruz Marker™ compatible goat anti-rabbit IgG-HRP: sc-2030 (dilution range: 1:2000-1:5000), Cruz Marker™ Molecular Weight Standards: sc-2035, TBS Blotto A Blocking Reagent: sc-2333 and Western Blotting Luminol Reagent: sc-2048. 2) Immunoprecipitation: use Protein A/G PLUS-Agarose: sc-2003 (0.5 ml agarose/2.0 ml). 3) Immunofluorescence: use goat anti-rabbit IgG-FITC: sc-2012 (dilution range: 1:100-1:400) or goat anti-rabbit IgG-TR: sc-2780 (dilution range: 1:100-1:400) with UltraCruz™ Mounting Medium: sc-24941.

DATA



LRRC43 (G-14): sc-138405. Western blot analysis of LRRC43 expression in NRK whole cell lysate.

RESEARCH USE

For research use only, not for use in diagnostic procedures.

PROTOCOLS

See our web site at www.scbt.com or our catalog for detailed protocols and support products.