

MOSPD1 (N-14): sc-138437

BACKGROUND

MOSPD1 (motile sperm domain-containing protein 1) is a 213 amino acid multi-pass membrane protein that contains one MSP domain and exists as three alternatively spliced isoforms. The gene encoding MOSPD1 maps to human chromosome Xq26.3. The X and Y chromosomes are the human sex chromosomes. Chromosome X consists of about 153 million base pairs and nearly 1,000 genes. The combination of an X and Y chromosome lead to normal male development while two copies of X lead to normal female development. There are a number of conditions related to an unusual number and combination of sex chromosomes being inherited, including Turner's syndrome, Klinefelter's syndrome and Triple X syndrome. Color blindness, hemophilia, and Duchenne muscular dystrophy are well known X chromosome-linked conditions which affect males more frequently as males carry a single X chromosome.

CHROMOSOMAL LOCATION

Genetic locus: MOSPD1 (human) mapping to Xq26.3; Mospd1 (mouse) mapping to X A5.

SOURCE

MOSPD1 (N-14) is an affinity purified goat polyclonal antibody raised against a peptide mapping at the N-terminus of MOSPD1 of human origin.

PRODUCT

Each vial contains 200 µg IgG in 1.0 ml of PBS with < 0.1% sodium azide and 0.1% gelatin.

Blocking peptide available for competition studies, sc-138437 P, (100 µg peptide in 0.5 ml PBS containing < 0.1% sodium azide and 0.2% BSA).

RESEARCH USE

For research use only, not for use in diagnostic procedures.

APPLICATIONS

MOSPD1 (N-14) is recommended for detection of MOSPD1 of mouse, rat and human origin by Western Blotting (starting dilution 1:200, dilution range 1:100-1:1000), immunoprecipitation [1-2 µg per 100-500 µg of total protein (1 ml of cell lysate)], immunofluorescence (starting dilution 1:50, dilution range 1:50-1:500) and solid phase ELISA (starting dilution 1:30, dilution range 1:30-1:3000); non cross-reactive with MOSPD2 or MOSPD3.

MOSPD1 (N-14) is also recommended for detection of MOSPD1 in additional species, including equine, canine, bovine, porcine and avian.

Suitable for use as control antibody for MOSPD1 siRNA (h): sc-91308, MOSPD1 siRNA (m): sc-149512, MOSPD1 shRNA Plasmid (h): sc-91308-SH, MOSPD1 shRNA Plasmid (m): sc-149512-SH, MOSPD1 shRNA (h) Lentiviral Particles: sc-91308-V and MOSPD1 shRNA (m) Lentiviral Particles: sc-149512-V.

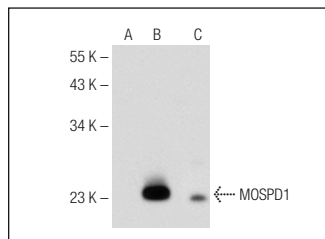
Molecular Weight of MOSPD1 isoforms: 24/18/24 kDa.

Positive Controls: MOSPD1 (h3): 293T Lysate: sc-110658, MOSPD1 (m): 293T Lysate: sc-121721 or SW480 cell lysate: sc-2219.

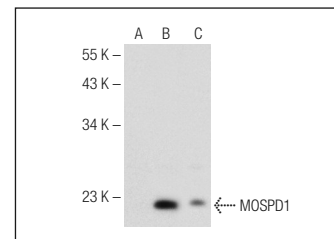
RECOMMENDED SECONDARY REAGENTS

To ensure optimal results, the following support (secondary) reagents are recommended: 1) Western Blotting: use donkey anti-goat IgG-HRP: sc-2020 (dilution range: 1:2000-1:100,000) or Cruz Marker™ compatible donkey anti-goat IgG-HRP: sc-2033 (dilution range: 1:2000-1:5000), Cruz Marker™ Molecular Weight Standards: sc-2035, TBS Blotto A Blocking Reagent: sc-2333 and Western Blotting Luminol Reagent: sc-2048. 2) Immunoprecipitation: use Protein A/G PLUS-Agarose: sc-2003 (0.5 ml agarose/2.0 ml). 3) Immunofluorescence: use donkey anti-goat IgG-FITC: sc-2024 (dilution range: 1:100-1:400) or donkey anti-goat IgG-TR: sc-2783 (dilution range: 1:100-1:400) with UltraCruz™ Mounting Medium: sc-24941.

DATA



MOSPD1 (N-14): sc-138437. Western blot analysis of MOSPD1 expression in non-transfected 293T: sc-117752 (A), mouse MOSPD1 transfected 293T: sc-121721 (B) and SW480 (C) whole cell lysates.



MOSPD1 (N-14): sc-138437. Western blot analysis of MOSPD1 expression in non-transfected 293T: sc-117752 (A), human MOSPD1 transfected 293T: sc-110658 (B) and SW480 (C) whole cell lysates.

STORAGE

Store at 4° C, **DO NOT FREEZE**. Stable for one year from the date of shipment. Non-hazardous. No MSDS required.

PROTOCOLS

See our web site at www.scbt.com or our catalog for detailed protocols and support products.



Try **MOSPD1 (G-7): sc-514079**, our highly recommended monoclonal alternative to MOSPD1 (N-14).