

MRGF (C-13): sc-138442

BACKGROUND

MRGF (MAS-related GPR, member F), also known as RTA, PSEC0142, GPR140 (G-protein coupled receptor 140) or GPR168 (G-protein coupled receptor 168), is a 343 amino acid multi-pass membrane protein that functions as an orphan receptor. MRGF belongs to the G-protein coupled receptor 1 family and Mas subfamily, and is thought to have a role in pain sensation and modulation by regulating nociceptor function. The gene encoding MRGF maps to human chromosome 11, which houses over 1,400 genes and comprises nearly 4% of the human genome. Jervell and Lange-Nielsen syndrome, Jacobsen syndrome, Niemann-Pick disease, hereditary angioedema and Smith-Lemli-Opitz syndrome are associated with defects in genes that maps to chromosome 11.

REFERENCES

- Ross, P.C., Figler, R.A., Corjay, M.H., Barber, C.M., Adam, N., Harcus, D.R. and Lynch, K.R. 1990. RTA, a candidate G protein-coupled receptor: cloning, sequencing, and tissue distribution. *Proc. Natl. Acad. Sci. USA* 87: 3052-3056.
- Fabiani, J.E., Avigliano, A., Dupont, J.C. and Fabiana, J.E. 2000. Hereditary angioedema. Long-term follow-up of 88 patients. Experience of the Argentine Allergy and Immunology Institute. *Allergol Immunopathol.* 28: 267-271.
- Dong, X., Han, S., Zylka, M.J., Simon, M.I. and Anderson, D.J. 2001. A diverse family of GPCRs expressed in specific subsets of nociceptive sensory neurons. *Cell* 106: 619-632.
- Jira, P.E., Waterham, H.R., Wanders, R.J., Smeitink, J.A., Sengers, R.C. and Wevers, R.A. 2003. Smith-Lemli-Opitz syndrome and the DHCR7 gene. *Ann. Hum. Genet.* 67: 269-280.
- Schuchman, E.H. 2007. The pathogenesis and treatment of acid sphingomyelinase-deficient Niemann-Pick disease. *J. Inherit. Metab. Dis.* 30: 654-663.
- Siem, G., Früh, A., Leren, T.P., Heimdal, K., Teig, E. and Harris, S. 2008. Jervell and Lange-Nielsen syndrome in Norwegian children: aspects around cochlear implantation, hearing, and balance. *Ear Hear.* 29: 261-269.

CHROMOSOMAL LOCATION

Genetic locus: MRGPRF (human) mapping to 11q13.2; Mrgprf (mouse) mapping to 7 F5.

SOURCE

MRGF (C-13) is an affinity purified rabbit polyclonal antibody raised against a peptide mapping within a C-terminal cytoplasmic domain of MRGF of human origin.

RESEARCH USE

For research use only, not for use in diagnostic procedures.

STORAGE

Store at 4° C, ****DO NOT FREEZE****. Stable for one year from the date of shipment. Non-hazardous. No MSDS required.

PRODUCT

Each vial contains 100 µg IgG in 1.0 ml of PBS with < 0.1% sodium azide and 0.1% gelatin.

Blocking peptide available for competition studies, sc-138442 P, (100 µg peptide in 0.5 ml PBS containing < 0.1% sodium azide and 0.2% BSA).

APPLICATIONS

MRGF (C-13) is recommended for detection of MRGF of mouse, rat and human origin by Western Blotting (starting dilution 1:100, dilution range 1:50-1:500), immunoprecipitation [1-2 µg per 100-500 µg of total protein (1 ml of cell lysate)], immunofluorescence (starting dilution 1:25, dilution range 1:25-1:250) and solid phase ELISA (starting dilution 1:30, dilution range 1:30-1:3000).

Suitable for use as control antibody for MRGF siRNA (h): sc-96694, MRGF siRNA (m): sc-149571, MRGF shRNA Plasmid (h): sc-96694-SH, MRGF shRNA Plasmid (m): sc-149571-SH, MRGF shRNA (h) Lentiviral Particles: sc-96694-V and MRGF shRNA (m) Lentiviral Particles: sc-149571-V.

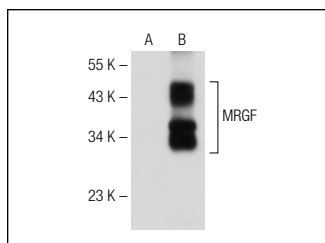
Molecular Weight of MRGF: 38 kDa.

Positive Controls: MRGF (h): 293T Lysate: sc-112769.

RECOMMENDED SECONDARY REAGENTS

To ensure optimal results, the following support (secondary) reagents are recommended: 1) Western Blotting: use goat anti-rabbit IgG-HRP: sc-2004 (dilution range: 1:2000-1:100,000) or Cruz Marker™ compatible goat anti-rabbit IgG-HRP: sc-2030 (dilution range: 1:2000-1:5000), Cruz Marker™ Molecular Weight Standards: sc-2035, TBS Blotto A Blocking Reagent: sc-2333 and Western Blotting Luminol Reagent: sc-2048. 2) Immunoprecipitation: use Protein A/G PLUS-Agarose: sc-2003 (0.5 ml agarose/2.0 ml). 3) Immunofluorescence: use goat anti-rabbit IgG-FITC: sc-2012 (dilution range: 1:100-1:400) or goat anti-rabbit IgG-TR: sc-2780 (dilution range: 1:100-1:400) with UltraCruz™ Mounting Medium: sc-24941.

DATA



MRGF (C-13): sc-138442. Western blot analysis of MRGF expression in non-transfected: sc-117752 (A) and human MRGF transfected: sc-112769 (B) 293T whole cell lysates.

PROTOCOLS

See our web site at www.scbt.com or our catalog for detailed protocols and support products.