

MS4A15 (V-12): sc-138447

BACKGROUND

MS4A (membrane-spanning 4-domain family, subfamily A) is a large family of proteins that includes at least 26 members in mouse and humans. Flanked by amino- and carboxyl-cytoplasmic regions, MS4A family members contain four highly conserved transmembrane domains. CD20, the most well-known MS4A family member, is a B-cell-specific molecule that functions as a calcium-permeable cation channel and is known to accelerate the G₀ to G₁ progression induced by IGF-1. MS4A15 (membrane-spanning 4-domains, subfamily A, member 15) is a 240 amino acid multi-pass membrane protein that exists as 2 alternatively spliced isoforms. The gene encoding MS4A15 maps to human chromosome 11, which houses over 1,400 genes and comprises nearly 4% of the human genome. Jervell and Lange-Nielsen syndrome, Jacobsen syndrome, Niemann-Pick disease, hereditary angioedema and Smith-Lemli-Opitz syndrome are associated with defects in genes that map to chromosome 11.

CHROMOSOMAL LOCATION

Genetic locus: MS4A15 (human) mapping to 11q12.2; Ms4a15 (mouse) mapping to 19 A.

SOURCE

MS4A15 (V-12) is an affinity purified rabbit polyclonal antibody raised against a peptide mapping within an internal region of MS4A15 of human origin.

PRODUCT

Each vial contains 100 µg IgG in 1.0 ml of PBS with < 0.1% sodium azide and 0.1% gelatin.

Blocking peptide available for competition studies, sc-138447 P, (100 µg peptide in 0.5 ml PBS containing < 0.1% sodium azide and 0.2% BSA).

STORAGE

Store at 4° C, ****DO NOT FREEZE****. Stable for one year from the date of shipment. Non-hazardous. No MSDS required.

APPLICATIONS

MS4A15 (V-12) is recommended for detection of MS4A15 of mouse, rat and human origin by Western Blotting (starting dilution 1:100, dilution range 1:50-1:500), immunoprecipitation [1-2 µg per 100-500 µg of total protein (1 ml of cell lysate)], immunofluorescence (starting dilution 1:25, dilution range 1:25-1:250) and solid phase ELISA (starting dilution 1:30, dilution range 1:30-1:3000); non cross-reactive with other MS4A family members.

MS4A15 (V-12) is also recommended for detection of MS4A15 in additional species, including equine, canine, bovine and porcine.

Suitable for use as control antibody for MS4A15 siRNA (h): sc-96984, MS4A15 siRNA (m): sc-149646, MS4A15 shRNA Plasmid (h): sc-96984-SH, MS4A15 shRNA Plasmid (m): sc-149646-SH, MS4A15 shRNA (h) Lentiviral Particles: sc-96984-V and MS4A15 shRNA (m) Lentiviral Particles: sc-149646-V.

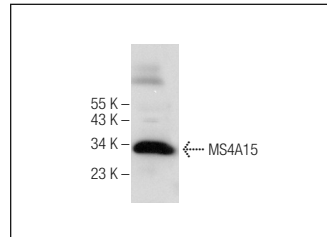
Molecular Weight of MS4A15 isoforms: 25/15 kDa.

Positive Controls: human lung extract: sc-363767 or human heart extract: sc-363763.

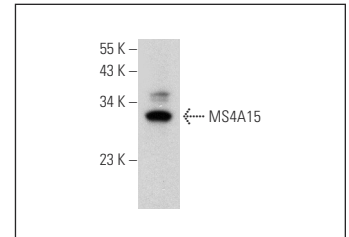
RECOMMENDED SECONDARY REAGENTS

To ensure optimal results, the following support (secondary) reagents are recommended: 1) Western Blotting: use goat anti-rabbit IgG-HRP: sc-2004 (dilution range: 1:2000-1:100,000) or Cruz Marker™ compatible goat anti-rabbit IgG-HRP: sc-2030 (dilution range: 1:2000-1:5000), Cruz Marker™ Molecular Weight Standards: sc-2035, TBS Blotto A Blocking Reagent: sc-2333 and Western Blotting Luminol Reagent: sc-2048. 2) Immunoprecipitation: use Protein A/G PLUS-Agarose: sc-2003 (0.5 ml agarose/2.0 ml). 3) Immunofluorescence: use goat anti-rabbit IgG-FITC: sc-2012 (dilution range: 1:100-1:400) or goat anti-rabbit IgG-TR: sc-2780 (dilution range: 1:100-1:400) with UltraCruz™ Mounting Medium: sc-24941.

DATA



MS4A15 (V-12): sc-138447. Western blot analysis of MS4A15 expression in human lung tissue extract.



MS4A15 (V-12): sc-138447. Western blot analysis of MS4A15 expression in human heart tissue extract.

RESEARCH USE

For research use only, not for use in diagnostic procedures.

PROTOCOLS

See our web site at www.scbt.com or our catalog for detailed protocols and support products.

MONOS
Satisfaction
Guaranteed

Try **MS4A15 (C-9): sc-515078**, our highly recommended monoclonal alternative to MS4A15 (V-12).