

PUS7L (K-13): sc-138566

BACKGROUND

PUS7L (pseudouridylate synthase 7 homolog (*S. cerevisiae*)-like) is a 701 amino acid protein that belongs to the pseudouridine synthase truD family and contains one TRUD domain. The PUS7L gene is conserved in chimpanzee, canine, bovine, mouse, chicken and zebrafish, and maps to human chromosome 12q12. Encoding over 1,100 genes within 132 million bases, chromosome 12 makes up about 4.5% of the human genome. A number of skeletal deformities are linked to chromosome 12 including hypochondrogenesis, achondrogenesis and Kniest dysplasia. Noonan syndrome, which includes heart and facial developmental defects among the primary symptoms, is caused by a mutant form of PTPN11 gene product, SH-PTP2. Chromosome 12 is also home to a homeobox gene cluster which encodes crucial transcription factors for morphogenesis, and the natural killer complex gene cluster encoding C-type lectin proteins which mediate the NK cell response to MHC I interaction.

REFERENCES

1. Jamieson, C.R., van der Burgt, I., Brady, A.F., van Reen, M., Elswawi, M.M., Hol, F., Jeffery, S., Patton, M.A. and Mariman, E. 1994. Mapping a gene for Noonan syndrome to the long arm of chromosome 12. *Nat. Genet.* 8: 357-360.
2. Yang, W. and Cole, W.G. 1998. Low basal transcripts of the COL2A1 collagen gene from lymphoblasts show alternative splicing of exon 12 in the Kniest form of spondyloepiphyseal dysplasia. *Hum. Mutat. Suppl1*: S1-S2.
3. Trowsdale, J., Barten, R., Haude, A., Stewart, C.A., Beck, S. and Wilson, M.J. 2001. The genomic context of natural killer receptor extended gene families. *Immunol. Rev.* 181: 20-38.
4. Kelley, J., Walter, L. and Trowsdale, J. 2005. Comparative genomics of natural killer cell receptor gene clusters. *PLoS Genet.* 1: 129-139.
5. van der Burgt, I. 2007. Noonan syndrome. *Orphanet. J. Rare Dis.* 2: 4.
6. Krejčí, J., Uhlířová, R., Galiová, G., Kozubek, S., Smigová, J. and Bártová, E. 2009. Genome-wide reduction in H3K9 acetylation during human embryonic stem cell differentiation. *J. Cell. Physiol.* 219: 677-687.
7. SWISS-PROT/TrEMBL (Q9H0K6). World Wide Web URL: <http://www.uniprot.org/uniprot/Q9H0K6>

CHROMOSOMAL LOCATION

Genetic locus: PUS7L (human) mapping to 12q12; Pus7l (mouse) mapping to 15 E3.

SOURCE

PUS7L (K-13) is an affinity purified rabbit polyclonal antibody raised against a peptide mapping within an internal region of PUS7L of human origin.

PRODUCT

Each vial contains 100 µg IgG in 1.0 ml of PBS with < 0.1% sodium azide and 0.1% gelatin.

Blocking peptide available for competition studies, sc-138566 P, (100 µg peptide in 0.5 ml PBS containing < 0.1% sodium azide and 0.2% BSA).

APPLICATIONS

PUS7L (K-13) is recommended for detection of PUS7L of mouse, rat and human origin by Western Blotting (starting dilution 1:100, dilution range 1:50-1:500), immunoprecipitation [1-2 µg per 100-500 µg of total protein (1 ml of cell lysate)], immunofluorescence (starting dilution 1:25, dilution range 1:25-1:250) and solid phase ELISA (starting dilution 1:30, dilution range 1:30-1:3000); non cross-reactive with PUS7.

Suitable for use as control antibody for PUS7L siRNA (h): sc-96083, PUS7L siRNA (m): sc-152595, PUS7L shRNA Plasmid (h): sc-96083-SH, PUS7L shRNA Plasmid (m): sc-152595-SH, PUS7L shRNA (h) Lentiviral Particles: sc-96083-V and PUS7L shRNA (m) Lentiviral Particles: sc-152595-V.

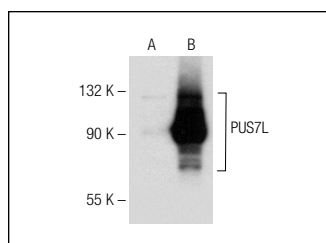
Molecular Weight of PUS7L: 81 kDa.

Positive Controls: PUS7L (h): 293T Lysate: sc-114870.

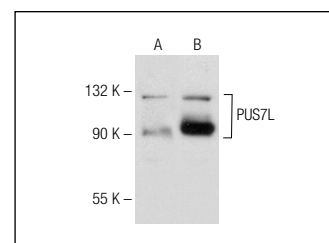
RECOMMENDED SECONDARY REAGENTS

To ensure optimal results, the following support (secondary) reagents are recommended: 1) Western Blotting: use goat anti-rabbit IgG-HRP: sc-2004 (dilution range: 1:2000-1:100,000) or Cruz Marker™ compatible goat anti-rabbit IgG-HRP: sc-2030 (dilution range: 1:2000-1:5000), Cruz Marker™ Molecular Weight Standards: sc-2035, TBS Blotto A Blocking Reagent: sc-2333 and Western Blotting Luminol Reagent: sc-2048. 2) Immunoprecipitation: use Protein A/G PLUS-Agarose: sc-2003 (0.5 ml agarose/2.0 ml). 3) Immunofluorescence: use goat anti-rabbit IgG-FITC: sc-2012 (dilution range: 1:100-1:400) or goat anti-rabbit IgG-TR: sc-2780 (dilution range: 1:100-1:400) with UltraCruz™ Mounting Medium: sc-24941.

DATA



PUS7L (K-13): sc-138566. Western blot analysis of PUS7L expression in non-transfected: sc-117752 (A) and human PUS7L transfected: sc-114870 (B) 293T whole cell lysates



PUS7L (K-13): sc-138566. Western blot analysis of PUS7L expression in non-transfected: sc-117752 (A) and human PUS7L transfected: sc-129566 (B) 293T whole cell lysates.

STORAGE

Store at 4° C, **DO NOT FREEZE**. Stable for one year from the date of shipment. Non-hazardous. No MSDS required.

RESEARCH USE

For research use only, not for use in diagnostic procedures.

PROTOCOLS

See our web site at www.scbt.com or our catalog for detailed protocols and support products.