

C15orf24 (F-12): sc-138754

BACKGROUND

Encoding more than 700 genes, chromosome 15 is made up of approximately 106 million base pairs and is about 3% of the human genome. Angelman and Prader-Willi syndromes are associated with loss of function or deletion of genes in the 15q14 region. In the case of Angelman syndrome, this loss is due to inactivity of the maternal 15q11-q13-encoded UBE3A gene in the brain by either chromosomal deletion or mutation. In cases of Prader-Willi syndrome, there is a partial or complete deletion of this region from the paternal copy of chromosome 15. Tay-Sachs disease is a lethal disorder associated with mutations of the HEXA gene, which is encoded by chromosome 15. Marfan syndrome is associated with chromosome 15 through the FBN1 gene. The C15orf24 gene product has been provisionally designated C15orf24 pending further characterization.

REFERENCES

1. Cachón-González, M.B., Wang, S.Z., Lynch, A., Ziegler, R., Cheng, S.H. and Cox, T.M. 2006. Effective gene therapy in an authentic model of Tay-Sachs-related diseases. *Proc. Natl. Acad. Sci. USA* 103: 10373-10378.
2. Zody, M.C., Garber, M., Sharpe, T., Young, S.K., Rowen, L., O'Neill, K., Whittaker, C.A., Kamal, M., Chang, J.L., Cuomo, C.A., Dewar, K., Fitzgerald, M.G., Kodira, C.D., Madan, A., Qin, S., Yang, X., Abbasi, N., et al. 2006. Analysis of the DNA sequence and duplication history of human chromosome 15. *Nature* 440: 671-675.
3. Diene, G., Postel-Vinay, A., Pinto, G., Polak, M. and Tauber, M. 2007. The Prader-Willi syndrome. *Ann. Endocrinol.* 68: 129-137.
4. Lalande, M. and Calciano, M.A. 2007. Molecular epigenetics of Angelman syndrome. *Cell. Mol. Life Sci.* 64: 947-960.
5. Maegawa, G.H., Tropak, M., Buttner, J., Stockley, T., Kok, F., Clarke, J.T. and Mahuran, D.J. 2007. Pyrimethamine as a potential pharmacological chaperone for late-onset forms of GM2 gangliosidosis. *J. Biol. Chem.* 282: 9150-9161.

CHROMOSOMAL LOCATION

Genetic locus: C15orf24 (human) mapping to 15q14; 2900064A13Rik (mouse) mapping to 2 E3.

SOURCE

C15orf24 (F-12) is an affinity purified rabbit polyclonal antibody raised against a peptide mapping within an extracellular domain of C15orf24 of human origin.

PRODUCT

Each vial contains 100 µg IgG in 1.0 ml of PBS with < 0.1% sodium azide and 0.1% gelatin.

Blocking peptide available for competition studies, sc-138754 P, (100 µg peptide in 0.5 ml PBS containing < 0.1% sodium azide and 0.2% BSA).

RESEARCH USE

For research use only, not for use in diagnostic procedures.

APPLICATIONS

C15orf24 (F-12) is recommended for detection of C15orf24 of mouse, rat and human origin by Western Blotting (starting dilution 1:100, dilution range 1:50-1:500), immunoprecipitation [1-2 µg per 100-500 µg of total protein (1 ml of cell lysate)], immunofluorescence (starting dilution 1:25, dilution range 1:25-1:250) and solid phase ELISA (starting dilution 1:30, dilution range 1:30-1:3000); non cross-reactive with other C15orf family members.

Suitable for use as control antibody for C15orf24 siRNA (h): sc-90194, C15orf24 siRNA (m): sc-141833, C15orf24 shRNA Plasmid (h): sc-90194-SH, C15orf24 shRNA Plasmid (m): sc-141833-SH, C15orf24 shRNA (h) Lentiviral Particles: sc-90194-V and C15orf24 shRNA (m) Lentiviral Particles: sc-141833-V.

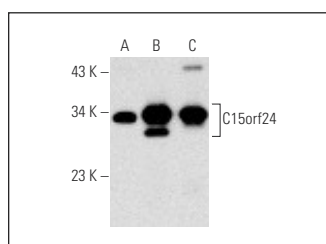
Molecular Weight of C15orf24: 26 kDa.

Positive Controls: mouse brain extract: sc-2253, human brain hippocampus extract: sc-364375 or mouse embryo extract: sc-364239.

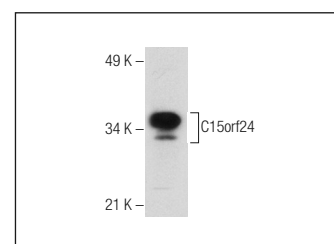
RECOMMENDED SECONDARY REAGENTS

To ensure optimal results, the following support (secondary) reagents are recommended: 1) Western Blotting: use goat anti-rabbit IgG-HRP: sc-2004 (dilution range: 1:2000-1:100,000) or Cruz Marker™ compatible goat anti-rabbit IgG-HRP: sc-2030 (dilution range: 1:2000-1:5000), Cruz Marker™ Molecular Weight Standards: sc-2035, TBS Blotto A Blocking Reagent: sc-2333 and Western Blotting Luminol Reagent: sc-2048. 2) Immunoprecipitation: use Protein A/G PLUS-Agarose: sc-2003 (0.5 ml agarose/2.0 ml). 3) Immunofluorescence: use goat anti-rabbit IgG-FITC: sc-2012 (dilution range: 1:100-1:400) or goat anti-rabbit IgG-TR: sc-2780 (dilution range: 1:100-1:400) with UltraCruz™ Mounting Medium: sc-24941.

DATA



C15orf24 (F-12): sc-138754. Western blot analysis of C15orf24 expression in C2C12 whole cell lysate (A) and mouse brain (B) and mouse embryo (C) tissue extracts.



C15orf24 (F-12): sc-138754. Western blot analysis of C15orf24 expression in human hippocampus tissue extract.

STORAGE

Store at 4° C, **DO NOT FREEZE**. Stable for one year from the date of shipment. Non-hazardous. No MSDS required.

PROTOCOLS

See our web site at www.scbt.com or our catalog for detailed protocols and support products.