

# RAP55 (N-13): sc-139036

## BACKGROUND

RAP55, also known as LSM14A (LSM14 homolog A), is a 463 amino acid member of the LSM14 family that contains a FFD-TFG box domain. The LSM14 domain and the RGG repeats of RAP55 are required for accumulation in P-bodies, and the region containing the FDF motif is responsible for cytoplasmic retention. RAP55, and all other Sm-like proteins, contain the Sm sequence motif, which consists of two regions separated by a linker of variable length that folds as a loop. The Sm-like proteins are thought to form a stable heteromer present in tri-snRNP particles, which are important for pre-mRNA splicing. RAP55 is phosphorylated upon DNA damage, probably by ATM or ATR. Existing as two alternatively spliced isoforms, the RAP55 gene is conserved in chimpanzee, canine, bovine, mouse, rat, chicken, zebrafish, *Drosophila*, mosquito, *C. elegans*, *S. pombe*, *S. cerevisiae*, *K. lactis*, *E. gossypii*, *M. grisea* and *N. crassa*, and maps to human chromosome 19q13.11.

## REFERENCES

- Lieb, B., Carl, M., Hock, R., Gebauer, D. and Scheer, U. 1998. Identification of a novel mRNA-associated protein in oocytes of *Pleurodeles waltl* and *Xenopus laevis*. *Exp. Cell Res.* 245: 272-281.
- Tanaka, K.J., Ogawa, K., Takagi, M., Imamoto, N., Matsumoto, K. and Tsujimoto, M. 2006. RAP55, a cytoplasmic mRNP component, represses translation in *Xenopus oocytes*. *J. Biol. Chem.* 281: 40096-40106.
- Yang, W.H., Yu, J.H., Gulick, T., Bloch, K.D. and Bloch, D.B. 2006. RNA-associated protein 55 (RAP55) localizes to mRNA processing bodies and stress granules. *RNA* 12: 547-554.
- Matsuoka, S., Ballif, B.A., Smogorzewska, A., McDonald, E.R., Hurov, K.E., Luo, J., Bakalarski, C.E., Zhao, Z., Solimini, N., Lerenthal, Y., Shiloh, Y., Gygi, S.P. and Elledge, S.J. 2007. ATM and ATR substrate analysis reveals extensive protein networks responsive to DNA damage. *Science* 316: 1160-1166.
- Online Mendelian Inheritance in Man, OMIM™. 2007. Johns Hopkins University, Baltimore, MD. MIM Number: 610677. World Wide Web URL: <http://www.ncbi.nlm.nih.gov/omim/>
- Dephoure, N., Zhou, C., Villén, J., Beausoleil, S.A., Bakalarski, C.E., Elledge, S.J. and Gygi, S.P. 2008. A quantitative atlas of mitotic phosphorylation. *Proc. Natl. Acad. Sci. USA* 105: 10762-10767.
- Marnef, A., Sommerville, J. and Ladomery, M.R. 2009. RAP55: insights into an evolutionarily conserved protein family. *Int. J. Biochem. Cell Biol.* 41: 977-981.

## CHROMOSOMAL LOCATION

Genetic locus: LSM14A (human) mapping to 19q13.11; Lsm14a (mouse) mapping to 7 B1.

## SOURCE

RAP55 (N-13) is an affinity purified goat polyclonal antibody raised against a peptide mapping near the N-terminus of RAP55 of human origin.

## PRODUCT

Each vial contains 200 µg IgG in 1.0 ml of PBS with < 0.1% sodium azide and 0.1% gelatin.

Blocking peptide available for competition studies, sc-139036 P, (100 µg peptide in 0.5 ml PBS containing < 0.1% sodium azide and 0.2% BSA).

## APPLICATIONS

RAP55 (N-13) is recommended for detection of RAP55 of mouse, rat and human origin by Western Blotting (starting dilution 1:200, dilution range 1:100-1:1000), immunoprecipitation [1-2 µg per 100-500 µg of total protein (1 ml of cell lysate)], immunofluorescence (starting dilution 1:50, dilution range 1:50-1:500) and solid phase ELISA (starting dilution 1:30, dilution range 1:30-1:3000); non cross-reactive with Lsm14B.

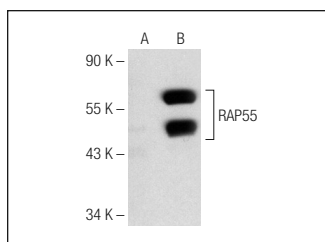
RAP55 (N-13) is also recommended for detection of RAP55 in additional species, including equine, canine, porcine and avian.

Suitable for use as control antibody for RAP55 siRNA (h): sc-97825, RAP55 siRNA (m): sc-152701, RAP55 shRNA Plasmid (h): sc-97825-SH, RAP55 shRNA Plasmid (m): sc-152701-SH, RAP55 shRNA (h) Lentiviral Particles: sc-97825-V and RAP55 shRNA (m) Lentiviral Particles: sc-152701-V.

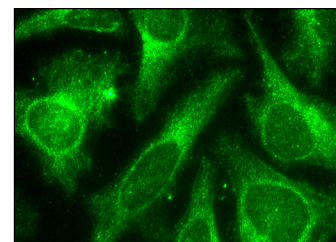
Molecular Weight of RAP55: 51 kDa.

Positive Controls: RAP55 (m): 293T Lysate: sc-127442.

## DATA



RAP55 (N-13): sc-139036. Western blot analysis of RAP55 expression in non-transfected: sc-117752 (A) and mouse RAP55 transfected: sc-127442 (B) 293T whole cell lysates.



RAP55 (N-13): sc-139036. Immunofluorescence staining of methanol-fixed HeLa cells showing cytoplasmic localization.

## STORAGE

Store at 4° C, \*\*DO NOT FREEZE\*\*. Stable for one year from the date of shipment. Non-hazardous. No MSDS required.

## RESEARCH USE

For research use only, not for use in diagnostic procedures.

**MONOS**  
Satisfaction  
Guaranteed

Try **RAP55 (G-5): sc-398633** or **RAP55 (C-5): sc-398552**, our highly recommended monoclonal alternatives to RAP55 (N-13).