

ZFP30 (T-13): sc-139199



The Power to Question

BACKGROUND

Zinc-finger proteins contain DNA-binding domains and have a wide variety of functions, most of which encompass some form of transcriptional activation or repression. The majority of zinc-finger proteins contain a Krüppel-type DNA binding domain and a KRAB domain, which is thought to interact with KAP1, thereby recruiting histone modifying proteins. ZFP30 (zinc finger protein 30 homolog) is a 519 amino acid protein that localizes to the nucleus and is composed of 13 C₂H₂-type zinc fingers and one KRAB domain. ZFP30 is encoded by a gene located on human chromosome 19, which consists of over 63 million bases, houses approximately 1,400 genes and is recognized for having the greatest gene density of the human chromosomes. It is the genetic home for a number of immunoglobulin (Ig) superfamily members, including the killer cell and leukocyte Ig-like receptors, a number of ICAMs, the CEACAM and PSG families, and Fc receptors (FcRs).

REFERENCES

1. Rousseau-Merck, M.F., et al. 1993. Chromosomal localization of 9 KOX zinc finger genes: physical linkages suggest clustering of KOX genes on chromosomes 12, 16, and 19. *Hum. Genet.* 92: 583-587.
2. Teglund, S., et al. 1994. The pregnancy-specific glycoprotein (PSG) gene cluster on human chromosome 19: fine structure of the 11 PSG genes and identification of 6 new genes forming a third subgroup within the carcino-embryonic antigen (CEA) family. *Genomics* 23: 669-684.
3. Wang, L., et al. 2000. C-CAM1, a candidate tumor suppressor gene, is abnormally expressed in primary lung cancers. *Clin. Cancer Res.* 6: 2988-2993.
4. Trowsdale, J., et al. 2001. The genomic context of natural killer receptor extended gene families. *Immunol. Rev.* 181: 20-38.
5. Sun, Y., et al. 2003. The KRAB domain of zinc finger gene ZNF268: a potential transcriptional repressor. *IUBMB Life* 55: 127-131.
6. Englbrecht, C.C., et al. 2004. Conservation, diversification and expansion of C₂H₂ zinc finger proteins in the *Arabidopsis thaliana* genome. *BMC Genomics* 5: 39.
7. Nakamura, M., et al. 2004. A novel subfamily of zinc finger genes involved in embryonic development. *J. Cell. Biochem.* 93: 887-895.
8. Grimwood, J., et al. 2004. The DNA sequence and biology of human chromosome 19. *Nature* 428: 529-535.
9. O'Geen, H., et al. 2007. Genome-wide analysis of KAP1 binding suggests autoregulation of KRAB-ZNFs. *PLoS Genet.* 3: e89.

CHROMOSOMAL LOCATION

Genetic locus: ZFP30 (human) mapping to 19q13.12.

SOURCE

ZFP30 (T-13) is an affinity purified goat polyclonal antibody raised against a peptide mapping within an internal region of ZFP30 of human origin.

PRODUCT

Each vial contains 200 µg IgG in 1.0 ml of PBS with < 0.1% sodium azide and 0.1% gelatin.

Blocking peptide available for competition studies, sc-139199 P, (100 µg peptide in 0.5 ml PBS containing < 0.1% sodium azide and 0.2% BSA).

APPLICATIONS

ZFP30 (T-13) is recommended for detection of ZFP30 of human origin by Western Blotting (starting dilution 1:200, dilution range 1:100-1:1000), immunoprecipitation [1-2 µg per 100-500 µg of total protein (1 ml of cell lysate)], immunofluorescence (starting dilution 1:50, dilution range 1:50-1:500) and solid phase ELISA (starting dilution 1:30, dilution range 1:30-1:3000); non cross-reactive with other ZFP family members.

Suitable for use as control antibody for ZFP30 siRNA (h): sc-97400, ZFP30 shRNA Plasmid (h): sc-97400-SH and ZFP30 shRNA (h) Lentiviral Particles: sc-97400-V.

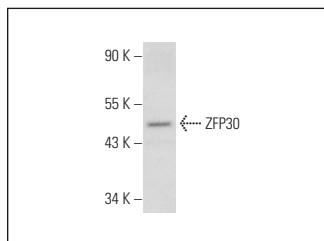
Molecular Weight of ZFP30: 62 kDa.

Positive Controls: HEK293 whole cell lysate: sc-45136.

RECOMMENDED SECONDARY REAGENTS

To ensure optimal results, the following support (secondary) reagents are recommended: 1) Western Blotting: use donkey anti-goat IgG-HRP: sc-2020 (dilution range: 1:2000-1:100,000) or Cruz Marker™ compatible donkey anti-goat IgG-HRP: sc-2033 (dilution range: 1:2000-1:5000), Cruz Marker™ Molecular Weight Standards: sc-2035, TBS Blotto A Blocking Reagent: sc-2333 and Western Blotting Luminol Reagent: sc-2048. 2) Immunoprecipitation: use Protein A/G PLUS-Agarose: sc-2003 (0.5 ml agarose/2.0 ml). 3) Immunofluorescence: use donkey anti-goat IgG-FITC: sc-2024 (dilution range: 1:100-1:400) or donkey anti-goat IgG-TR: sc-2783 (dilution range: 1:100-1:400) with UltraCruz™ Mounting Medium: sc-24941.

DATA



ZFP30 (T-13): sc-139199. Western blot analysis of ZFP30 expression in HEK293 whole cell lysate.

STORAGE

Store at 4° C, **DO NOT FREEZE**. Stable for one year from the date of shipment. Non-hazardous. No MSDS required.

RESEARCH USE

For research use only, not for use in diagnostic procedures.