

C10orf71 (S-17): sc-139460

BACKGROUND

C10orf71 (chromosome 10 open reading frame 71) is a 1,435 amino acid protein that exists as two alternatively spliced isoforms that are encoded by a gene located on human chromosome 10. Spanning nearly 135 million base pairs, chromosome 10 makes up approximately 4.5% of total DNA in cells and encodes nearly 1,200 genes. Several protein-coding genes, including those that encode for chemokines, cadherins, excision repair proteins, early growth response factors (Egrs) and fibroblast growth receptors (FGFRs), are located on chromosome 10. Defects in some of the genes that map to chromosome 10 are associated with Charcot-Marie Tooth disease, Jackson-Weiss syndrome, Usher syndrome, nonsyndromic deafness, Wolman's syndrome, Cowden syndrome, multiple endocrine neoplasia type 2 and porphyria.

REFERENCES

- Jabs, E.W., et al. 1994. Jackson-Weiss and Crouzon syndromes are allelic with mutations in fibroblast growth factor receptor 2. *Nat. Genet.* 8: 275-279.
- Deloukas, P., et al. 2000. Report of the third international workshop on human chromosome 10 mapping and sequencing 1999. *Cytogenet. Cell Genet.* 90: 1-12.
- Gilbert, F. 2001. *Chromosome 10. Genet. Test.* 5: 69-82.
- Berger, P., et al. 2002. Molecular cell biology of Charcot-Marie-Tooth disease. *Neurogenetics* 4: 1-15.
- Teresi, R.E., et al. 2007. Cowden syndrome-affected patients with PTEN promoter mutations demonstrate abnormal protein translation. *Am. J. Hum. Genet.* 81: 756-767.
- Cho, M.Y., et al. 2008. First report of ovarian dysgerminoma in Cowden syndrome with germline PTEN mutation and PTEN-related 10q loss of tumor heterozygosity. *Am. J. Surg. Pathol.* 32: 1258-1264.
- Yin, Y., et al. 2008. PTEN: a new guardian of the genome. *Oncogene* 27: 5443-5453.
- Laugel, V., et al. 2010. Mutation update for the CSB/ERCC6 and CSA/ERCC8 genes involved in Cockayne syndrome. *Hum. Mutat.* 31: 113-126.

CHROMOSOMAL LOCATION

Genetic locus: C10orf71 (human) mapping to 10q11.23; 3425401B19Rik (mouse) mapping to 14 B.

SOURCE

C10orf71 (S-17) is an affinity purified rabbit polyclonal antibody raised against a peptide mapping near the N-terminus of C10orf71 of human origin.

PRODUCT

Each vial contains 100 µg IgG in 1.0 ml of PBS with < 0.1% sodium azide and 0.1% gelatin.

Blocking peptide available for competition studies, sc-139460 P, (100 µg peptide in 0.5 ml PBS containing < 0.1% sodium azide and 0.2% BSA).

APPLICATIONS

C10orf71 (S-17) is recommended for detection of C10orf71 of human origin, 3425401B19Rik of mouse origin and the corresponding rat homolog by Western Blotting (starting dilution 1:100, dilution range 1:50-1:500), immunoprecipitation [1-2 µg per 100-500 µg of total protein (1 ml of cell lysate)], immunofluorescence (starting dilution 1:25, dilution range 1:25-1:250) and solid phase ELISA (starting dilution 1:30, dilution range 1:30-1:3000).

C10orf71 (S-17) is also recommended for detection of C10orf71 in additional species, including canine, bovine and porcine.

Suitable for use as control antibody for C10orf71 siRNA (h): sc-90418, 3425401B19Rik siRNA (m): sc-108922, C10orf71 shRNA Plasmid (h): sc-90418-SH, 3425401B19Rik shRNA Plasmid (m): sc-108922-SH, C10orf71 shRNA (h) Lentiviral Particles: sc-90418-V and 3425401B19Rik shRNA (m) Lentiviral Particles: sc-108922-V.

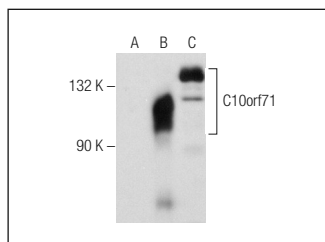
Molecular Weight of C10orf71: 156 kDa.

Positive Controls: MCF7 whole cell lysate: sc-2206, C10orf71 (h): 293T Lysate: sc-373311 or HuT 78 whole cell lysate: sc-2208.

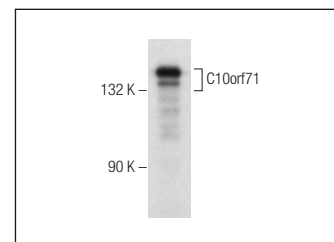
RECOMMENDED SECONDARY REAGENTS

To ensure optimal results, the following support (secondary) reagents are recommended: 1) Western Blotting: use goat anti-rabbit IgG-HRP: sc-2004 (dilution range: 1:2000-1:100,000) or Cruz Marker™ compatible goat anti-rabbit IgG-HRP: sc-2030 (dilution range: 1:2000-1:5000), Cruz Marker™ Molecular Weight Standards: sc-2035, TBS Blotto A Blocking Reagent: sc-2333 and Western Blotting Luminol Reagent: sc-2048. 2) Immunoprecipitation: use Protein A/G PLUS-Agarose: sc-2003 (0.5 ml agarose/2.0 ml). 3) Immunofluorescence: use goat anti-rabbit IgG-FITC: sc-2012 (dilution range: 1:100-1:400) or goat anti-rabbit IgG-TR: sc-2780 (dilution range: 1:100-1:400) with UltraCruz™ Mounting Medium: sc-24941.

DATA



C10orf71 (S-17): sc-139460. Western blot analysis of C10orf71 expression in non-transfected 293T: sc-117752 (A), human C10orf71 transfected 293T: sc-373311 (B) and HuT 78 (C) whole cell lysates.



C10orf71 (S-17): sc-139460. Western blot analysis of C10orf71 expression in MCF7 whole cell lysate.

STORAGE

Store at 4° C, **DO NOT FREEZE**. Stable for one year from the date of shipment. Non-hazardous. No MSDS required.

RESEARCH USE

For research use only, not for use in diagnostic procedures.