

Gephyrin (R-300): sc-14003

BACKGROUND

The sub-membraneous region at the postsynaptic membrane contains a number of proteins critical for receptor targeting. Gephyrin is a microtubule-associated protein highly expressed in brain and localized to neuronal postsynaptic membranes. Gephyrin is essential for the postsynaptic localization of the inhibitory Glycine receptor and is thought to anchor the receptor to subsynaptic microtubules. The protein is expressed in most mammalian tissues with predominant expression in brain. At least five additional splice variants of Gephyrin ranging in molecular weight have been identified in rat and human brain tissue.

REFERENCES

1. Prior, P., et al. 1992. Primary structure and alternative splice variants of Gephyrin, a putative Glycine receptor-Tubulin linker protein. *Neuron* 8: 1161-1170.
2. Takagi, T., et al. 1992. Co-expression of the receptor-associated protein Gephyrin changes the ligand binding affinities of $\alpha 2$ Glycine receptors. *FEBS Lett.* 303: 178-180.
3. Kirsch, J., et al. 1993. Distribution of Gephyrin transcripts in the adult and developing rat brain. *Eur. J. Neurosci.* 5: 1109-1117.
4. Meyer, G., et al. 1995. Identification of a Gephyrin binding motif on the Glycine receptor β subunit. *Neuron* 15: 563-572.
5. Vannier, C., et al. 1997. Biology of the postsynaptic Glycine receptor. *Int. Rev. Cytol.* 176: 201-244.
6. Ramming, M., et al. 1997. Analysis of the promoter region of the murine Gephyrin gene. *FEBS Lett.* 405: 137-140.
7. Kawasaki, B.T., et al. 1997. Variants of the receptor/channel clustering molecule Gephyrin in brain: distinct distribution patterns, developmental profiles, and proteolytic cleavage by Calpain. *J. Neurosci. Res.* 49: 381-388.

CHROMOSOMAL LOCATION

Genetic locus: GPHN (human) mapping to 14q23.3; Gphn (mouse) mapping to 12 C3.

SOURCE

Gephyrin (R-300) is a rabbit polyclonal antibody raised against amino acids 437-736 mapping near the C-terminus of Gephyrin of rat origin.

PRODUCT

Each vial contains 200 μ g IgG in 1.0 ml of PBS with < 0.1% sodium azide and 0.1% gelatin.

STORAGE

Store at 4° C, ****DO NOT FREEZE****. Stable for one year from the date of shipment. Non-hazardous. No MSDS required.

RESEARCH USE

For research use only, not for use in diagnostic procedures.

APPLICATIONS

Gephyrin (R-300) is recommended for detection of Gephyrin of mouse, rat and human origin by Western Blotting (starting dilution 1:200, dilution range 1:100-1:1000), immunoprecipitation [1-2 μ g per 100-500 μ g of total protein (1 ml of cell lysate)], immunofluorescence (starting dilution 1:50, dilution range 1:50-1:500), immunohistochemistry (including paraffin-embedded sections) (starting dilution 1:50, dilution range 1:50-1:500) and solid phase ELISA (starting dilution 1:30, dilution range 1:30-1:3000).

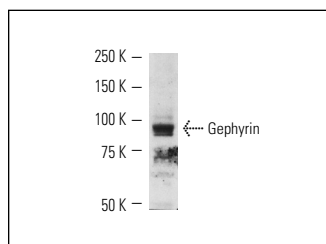
Gephyrin (R-300) is also recommended for detection of Gephyrin in additional species, including equine, canine and avian.

Suitable for use as control antibody for Gephyrin siRNA (h): sc-35464, Gephyrin siRNA (m): sc-35465, Gephyrin shRNA Plasmid (h): sc-35464-SH, Gephyrin shRNA Plasmid (m): sc-35465-SH, Gephyrin shRNA (h) Lentiviral Particles: sc-35464-V and Gephyrin shRNA (m) Lentiviral Particles: sc-35465-V.

Molecular Weight of Gephyrin: 93 kDa.

Positive Controls: 3611-RF whole cell lysate: sc-2215, H4 cell lysate: sc-2408 or rat brain extract: sc-2392.

DATA



Gephyrin (R-300): sc-14003. Western blot analysis of Gephyrin expression in rat brain tissue extract.



Gephyrin (R-300): sc-14003. Immunoperoxidase staining of formalin fixed, paraffin-embedded human gall bladder tissue showing cytoplasmic and membrane staining of glandular cells.

SELECT PRODUCT CITATIONS

1. Jacob, T.C., et al. 2005. Gephyrin regulates the cell surface dynamics of synaptic GABA_A receptors. *J. Neurosci.* 25: 10469-10478.
2. Fang, M., et al. 2011. Downregulation of gephyrin in temporal lobe epilepsy neurons in humans and a rat model. *Synapse* 65: 1006-1014.

PROTOCOLS

See our web site at www.scbt.com or our catalog for detailed protocols and support product

MONOS
Satisfaction
Guaranteed

Try **Gephyrin (G-6): sc-25311** or **Gephyrin (B-4): sc-55469**, our highly recommended monoclonal alternatives to Gephyrin (R-300).