

MAGE-B1 (E-19): sc-14294

BACKGROUND

The melanoma-associated antigen (MAGE) family consists of a number of antigens recognized by cytotoxic T lymphocytes. The MAGE genes were initially isolated from different kinds of tumors, and based on their virtually exclusive tumor-specific expression in adult tissues, they have been used as targets for cancer immunotherapy. MAGE genes encode for tumor-rejection antigens and are expressed in tumors of different histologic types, but not in normal tissues, with the exception of testis and placenta. Although a large number of MAGE genes have now been identified and extensively studied in tumors of various origin, their function in normal cells remains unknown.

REFERENCES

- Okami, J., et al. 2000. Genetic detection for micrometastasis in lymph node of biliary tract carcinoma. *Clin. Cancer Res.* 6: 2326-2332.
- Granelli, P., et al. 2000. Melanoma antigen genes 1 and 2 are differentially expressed in human gastric and cardiac carcinomas. *Scand. J. Gastroenterol.* 35: 528-533.
- Klein, C., et al. 2000. Comparative analysis of genetically modified dendritic cells and tumor cells as therapeutic cancer vaccines. *J. Exp. Med.* 191: 1699-1708.
- Busam, K.J., et al. 2000. Immunoreactivity with the anti-MAGE antibody 57B in malignant melanoma: frequency of expression and correlation with prognostic parameters. *Mod. Pathol.* 13: 459-465.
- Kobayashi, Y., et al. 2000. Expression of MAGE, GAGE and BAGE genes in human liver diseases: utility as molecular markers for hepatocellular carcinoma. *J. Hepatol.* 32: 612-617.
- Luiten, R., et al. 2000. A MAGE-A1 peptide is recognized on HLA-B7 human tumors by cytolytic T lymphocytes. *Tissue Antigens* 55: 149-152.
- Osterlund, C., et al. 2000. MAGE-B4, a novel melanoma antigen (MAGE) gene specifically expressed during germ cell differentiation. *Cancer Res.* 60: 1054-1061.

CHROMOSOMAL LOCATION

Genetic locus: MAGEB1 (human) mapping to Xp21.3.

SOURCE

MAGE-B1 (E-19) is an affinity purified goat polyclonal antibody raised against a peptide mapping near the N-terminus of MAGE-B1 of human origin.

PRODUCT

Each vial contains 200 µg IgG in 1.0 ml of PBS with < 0.1% sodium azide and 0.1% gelatin.

Blocking peptide available for competition studies, sc-14294 P, (100 µg peptide in 0.5 ml PBS containing < 0.1% sodium azide and 0.2% BSA).

STORAGE

Store at 4° C, ****DO NOT FREEZE****. Stable for one year from the date of shipment. Non-hazardous. No MSDS required.

APPLICATIONS

MAGE-B1 (E-19) is recommended for detection of MAGE-B1 of human origin by Western Blotting (starting dilution 1:200, dilution range 1:100-1:1000), immunoprecipitation [1-2 µg per 100-500 µg of total protein (1 ml of cell lysate)], immunofluorescence (starting dilution 1:50, dilution range 1:50-1:500) and solid phase ELISA (starting dilution 1:30, dilution range 1:30-1:3000).

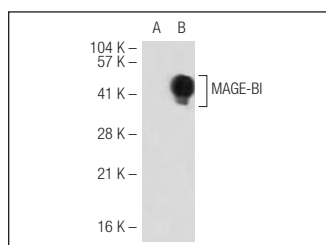
Suitable for use as control antibody for MAGE-B1 siRNA (h): sc-37314, MAGE-B1 shRNA Plasmid (h): sc-37314-SH and MAGE-B1 shRNA (h) Lentiviral Particles: sc-37314-V.

Positive Controls: MAGE-B1 (h): 293T Lysate: sc-113270 or MAGE-B1 (h2): 293T Lysate : sc-176733.

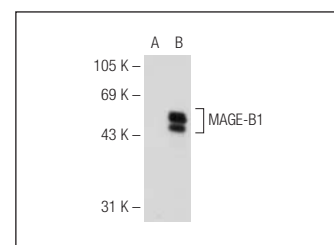
RECOMMENDED SECONDARY REAGENTS

To ensure optimal results, the following support (secondary) reagents are recommended: 1) Western Blotting: use donkey anti-goat IgG-HRP: sc-2020 (dilution range: 1:2000-1:100,000) or Cruz Marker™ compatible donkey anti-goat IgG-HRP: sc-2033 (dilution range: 1:2000-1:5000), Cruz Marker™ Molecular Weight Standards: sc-2035, TBS Blotto A Blocking Reagent: sc-2333 and Western Blotting Luminol Reagent: sc-2048. 2) Immunoprecipitation: use Protein A/G PLUS-Agarose: sc-2003 (0.5 ml agarose/2.0 ml). 3) Immunofluorescence: use donkey anti-goat IgG-FITC: sc-2024 (dilution range: 1:100-1:400) or donkey anti-goat IgG-TR: sc-2783 (dilution range: 1:100-1:400) with UltraCruz™ Mounting Medium: sc-24941.

DATA



MAGE-B1 (E-19): sc-14294. Western blot analysis of MAGE-B1 expression in non-transfected: sc-117752 (A) and human MAGE-B1 transfected: sc-113270 (B) 293T whole cell lysates.



MAGE-B1 (E-19): sc-14294. Western blot analysis of MAGE-B1 expression in non-transfected: sc-117752 (A) and human MAGE-B1 transfected: sc-176733 (B) 293T whole cell lysates.

RESEARCH USE

For research use only, not for use in diagnostic procedures.

PROTOCOLS

See our web site at www.scbt.com or our catalog for detailed protocols and support products.