

ST (I-21): sc-14516

BACKGROUND

The members of the G protein-coupled receptor family are distinguished by their slow transmitting response to ligand binding. These seven transmembrane proteins include the adrenergic, serotonin and dopamine receptors. The effect of the signaling molecule can be excitatory or inhibitory depending on the type of receptor to which it binds. Members of the β -Arrestin family regulate receptor binding to G proteins. β -Arrestins have been found to be located at postsynaptic sites, where they are thought to act in concert with β ARK (β ARK1, also designated GRK 2; or β ARK2, also designated GRK 3) to regulate G protein-coupled neurotransmitter receptors. Expression of β -Arrestin-1 and β -Arrestin-2 is seen predominantly in spleen and neuronal tissues. It has been shown that β -Arrestin-1 expression is modulated by intracellular cAMP, which may be a novel mechanism for the regulation of receptor-mediated responses. The Na/Cl-dependent ST (SLC6A4) functions to clear serotonin from the synaptic cleft. Many tricyclic antidepressants and serotonin selective reuptake inhibitors appear to act on this transporter. SSRIs function by increasing the amount of time serotonin remains in the synaptic cleft. The presence of active ST is vital for proper emotional development within the brain.

REFERENCES

1. Cotecchia, S., et al. 1990. Multiple second messenger pathways of α -adrenergic receptor subtypes expressed in eukaryotic cells. *J. Biol. Chem.* 265: 63-69.
2. Levy, F.O., et al. 1992. Molecular cloning of a human gene (S31) encoding a novel serotonin receptor mediating inhibition of adenylyl cyclase. *FEBS Lett.* 296: 201-206.
3. Ramamoorthy, S., et al. 1993. Antidepressant- and cocaine-sensitive human serotonin transporter: molecular cloning, expression, and chromosomal localization. *Proc. Natl. Acad. Sci. USA* 90: 2542-2546.
4. Hediger, M.A., et al. 1995. Mammalian ion-coupled solute transporters. *J. Phys.* 482: 7S-17S.

CHROMOSOMAL LOCATION

Genetic locus: SLC6A4 (human) mapping to 17q11.2; Slc6a4 (mouse) mapping to 11 B5.

SOURCE

ST (I-21) is an affinity purified goat polyclonal antibody raised against a peptide mapping near the C-terminus of ST of human origin.

PRODUCT

Each vial contains 200 μ g IgG in 1.0 ml of PBS with < 0.1% sodium azide and 0.1% gelatin.

Blocking peptide available for competition studies, sc-14516 P, (100 μ g peptide in 0.5 ml PBS containing < 0.1% sodium azide and 0.2% BSA).

STORAGE

Store at 4°C, ****DO NOT FREEZE****. Stable for one year from the date of shipment. Non-hazardous. No MSDS required.

APPLICATIONS

ST (I-21) is recommended for detection of serotonin transporter of mouse, rat and human origin by Western Blotting (starting dilution 1:200, dilution range 1:100-1:1000), immunofluorescence (starting dilution 1:50, dilution range 1:50-1:500), immunohistochemistry (including paraffin-embedded sections) (starting dilution 1:50, dilution range 1:50-1:500) and solid phase ELISA (starting dilution 1:30, dilution range 1:30-1:3000).

ST (I-21) is also recommended for detection of serotonin transporter in additional species, including equine, canine, bovine, porcine and avian.

Suitable for use as control antibody for ST siRNA (h): sc-36565, ST siRNA (m): sc-36566, ST shRNA Plasmid (h): sc-36565-SH, ST shRNA Plasmid (m): sc-36566-SH, ST shRNA (h) Lentiviral Particles: sc-36565-V and ST shRNA (m) Lentiviral Particles: sc-36566-V.

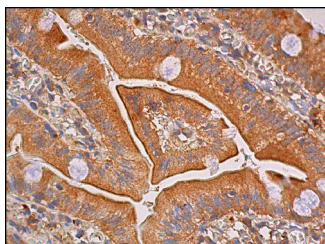
Molecular Weight of ST: 70 kDa.

Positive Controls: rat brain extract: sc-2392.

RECOMMENDED SECONDARY REAGENTS

To ensure optimal results, the following support (secondary) reagents are recommended: 1) Western Blotting: use donkey anti-goat IgG-HRP: sc-2020 (dilution range: 1:2000-1:100,000) or Cruz Marker™ compatible donkey anti-goat IgG-HRP: sc-2033 (dilution range: 1:2000-1:5000), Cruz Marker™ Molecular Weight Standards: sc-2035, TBS Blotto A Blocking Reagent: sc-2333 and Western Blotting Luminol Reagent: sc-2048. 2) Immunofluorescence: use donkey anti-goat IgG-FITC: sc-2024 (dilution range: 1:100-1:400) or donkey anti-goat IgG-TR: sc-2783 (dilution range: 1:100-1:400) with UltraCruz™ Mounting Medium: sc-24941. 3) Immunohistochemistry: use ImmunoCruz™: sc-2053 or ABC: sc-2023 goat IgG Staining Systems.

DATA



ST (I-21): sc-14516. Immunoperoxidase staining of formalin fixed, paraffin-embedded human small intestine tissue showing apical membrane and cytoplasmic staining of glandular cells.

RESEARCH USE

For research use only, not for use in diagnostic procedures.



Try **ST (24A5): sc-33724**, our highly recommended monoclonal alternative to ST (I-21).