

HLA-DO β (V-16): sc-14543

BACKGROUND

Peptide (antigen) binding to major histocompatibility complex (MHC) class II molecules destined for presentation to CD4⁺ helper T cells is determined by two key events. These include the dissociation of class II-associated invariant chain peptides (CLIP) from an antigen binding groove in MHC II-ly dimers and by the activity of MHC molecules HLA-DM and -DO. Accumulating in endosomal/lysosomal compartments and on the surface of B cells, HLA-DM, -DO molecules regulate the dissociation of CLIP and the subsequent binding of exogenous peptides to HLA class II molecules (HLA-DR) by sustaining a conformation that favors peptide exchange. RFLP analysis of HLA-DM genes from rheumatoid arthritis (RA) patients suggests that certain polymorphisms are genetic factors for RA susceptibility.

REFERENCES

1. Kropshofer, H., et al. 1998. A role for HLA-DO as a co-chaperone of HLA-DM in peptide loading of MHC class II molecules. *EMBO J.* 17: 2971-2981.
2. Siegmund, T., et al. 1999. HLA-DMA and HLA-DMB alleles in German patients with type 1 diabetes mellitus. *Tissue Antigens* 54: 291-294.
3. Arndt, S.O., et al. 2000. Functional HLA-DM on the surface of B cells and immature dendritic cells. *EMBO J.* 19: 1241-1251.
4. Brunet, A., et al. 2000. Functional characterization of a lysosomal sorting motif in the cytoplasmic tail of HLA-DO β . *J. Biol. Chem.* 275: 37062-37071.
5. Doebele, C.R., et al. 2000. Determination of the HLA-DM interaction site on HLA-DR molecules. *Immunity* 13: 517-527.
6. Louis-Pence, P., et al. 2000. The down-regulation of HLA-DM gene expression in rheumatoid arthritis is not related to their promoter polymorphism. *J. Immunol.* 165: 4861-4869.
7. Toussiot, E., et al. 2000. The association of HLA-DM genes with rheumatoid arthritis in eastern France. *Hum. Immunol.* 61: 303-308.

CHROMOSOMAL LOCATION

Genetic locus: DOB (human) mapping to 6p21.32; H2-Ob (mouse) mapping to 17 B1.

SOURCE

HLA-DO β (V-16) is an affinity purified goat polyclonal antibody raised against a peptide mapping within an internal region of HLA-DO β of human origin.

PRODUCT

Each vial contains 200 μ g IgG in 1.0 ml of PBS with < 0.1% sodium azide and 0.1% gelatin.

Blocking peptide available for competition studies, sc-14543 P, (100 μ g peptide in 0.5 ml PBS containing < 0.1% sodium azide and 0.2% BSA).

STORAGE

Store at 4 $^{\circ}$ C, ****DO NOT FREEZE****. Stable for one year from the date of shipment. Non-hazardous. No MSDS required.

APPLICATIONS

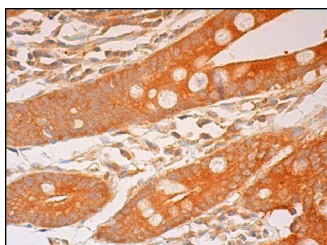
HLA-DO β (V-16) is recommended for detection of HLA-DO β of mouse, rat and human origin by Western Blotting (starting dilution 1:200, dilution range 1:100-1:1000), immunofluorescence (starting dilution 1:50, dilution range 1:50-1:500), immunohistochemistry (including paraffin-embedded sections) (starting dilution 1:50, dilution range 1:50-1:500) and solid phase ELISA (starting dilution 1:30, dilution range 1:30-1:3000).

Suitable for use as control antibody for HLA-DO β siRNA (h): sc-42913, HLA-DO β siRNA (m): sc-42914, HLA-DO β shRNA Plasmid (h): sc-42913-SH, HLA-DO β shRNA Plasmid (m): sc-42914-SH, HLA-DO β shRNA (h) Lentiviral Particles: sc-42913-V and HLA-DO β shRNA (m) Lentiviral Particles: sc-42914-V.

RECOMMENDED SECONDARY REAGENTS

To ensure optimal results, the following support (secondary) reagents are recommended: 1) Western Blotting: use donkey anti-goat IgG-HRP: sc-2020 (dilution range: 1:2000-1:100,000) or Cruz Marker[™] compatible donkey anti-goat IgG-HRP: sc-2033 (dilution range: 1:2000-1:5000), Cruz Marker[™] Molecular Weight Standards: sc-2035, TBS Blotto A Blocking Reagent: sc-2333 and Western Blotting Luminol Reagent: sc-2048. 2) Immunofluorescence: use donkey anti-goat IgG-FITC: sc-2024 (dilution range: 1:100-1:400) or donkey anti-goat IgG-TR: sc-2783 (dilution range: 1:100-1:400) with UltraCruz[™] Mounting Medium: sc-24941. 3) Immunohistochemistry: use ImmunoCruz[™]: sc-2053 or ABC: sc-2023 goat IgG Staining Systems.

DATA



HLA-DO β (V-16): sc-14543. Immunoperoxidase staining of formalin fixed, paraffin-embedded human duodenum tissue showing cytoplasmic staining of glandular cells.

RESEARCH USE

For research use only, not for use in diagnostic procedures.

PROTOCOLS

See our web site at www.scbt.com or our catalog for detailed protocols and support products.

MONOS
Satisfaction
Guaranteed

Try **HLA-DO β (DOB.L1): sc-69739**, our highly recommended monoclonal alternative to HLA-DO β (V-16).