

SR-2C (C-20): sc-1464

BACKGROUND

Serotonin (also designated 5-hydroxytryptamine or 5-HT) is a molecule that functions as a neurotransmitter, a hormone and a mitogen, and it is predominantly expressed in the gut, platelets and central nervous system (CNS). In the CNS, serotonin modulates several processes, including anxiety, sleep, appetite, behavior and drug abuse. In platelets and gut, serotonin plays a major role in cardiovascular function and motility of the gastrointestinal tract, respectively. Serotonin mediates its effects through several of G protein-coupled receptors, designated 5-HT receptors or alternatively SR receptors. The SR-2 receptors are comprised of three subtypes, SR-2A, SR-2B and SR-2C, which activate phospholipase C and release intracellular stores of calcium in response to serotonin. SR-2A has a specific role in tracheal smooth muscle contraction, bronchoconstriction and mediating aldosterone production, and it is also thought to play a role in several psychiatric disorders, including depression and schizophrenia. SR-2B is expressed in embryonic and adult cardiovascular tissues, gut and brain and plays an important role in the pathology of cardiac disorders. SR-2C is thought to mediate the effects of atypical antipsychotic drugs.

REFERENCES

1. Watts, S.W., et al. 1994. Contractile serotonin-2A receptor signal transduction in guinea pig trachea: importance of protein kinase C and extracellular and intracellular calcium but not phosphoinositide hydrolysis. *J. Pharmacol. Exp. Ther.* 271: 832-844.
2. Goppelt-Strube, M., et al. 1998. Signaling pathways mediating induction of the early response genes prostaglandin G/H synthase-2 and egr-1 by serotonin via 5-HT_{2A} receptors. *J. Cell. Physiol.* 175: 341-347.

CHROMOSOMAL LOCATION

Genetic locus: HTR2C (human) mapping to Xq23; Htr2c (mouse) mapping to X F2.

SOURCE

SR-2C (C-20) is an affinity purified goat polyclonal antibody raised against a peptide mapping at the C-terminus of SR-2C of human origin.

PRODUCT

Each vial contains 200 µg IgG in 1.0 ml of PBS with < 0.1% sodium azide and 0.1% gelatin.

Blocking peptide available for competition studies, sc-1464 P, (100 µg peptide in 0.5 ml PBS containing < 0.1% sodium azide and 0.2% BSA).

STORAGE

Store at 4° C, ****DO NOT FREEZE****. Stable for one year from the date of shipment. Non-hazardous. No MSDS required.

PROTOCOLS

See our web site at www.scbt.com or our catalog for detailed protocols and support products.

APPLICATIONS

SR-2C (C-20) is recommended for detection of serotonin 2C receptor (5-HT_{2C}) of mouse, rat and human origin by Western Blotting (starting dilution 1:200, dilution range 1:100-1:1000) and immunohistochemistry (including paraffin-embedded sections) (starting dilution 1:50, dilution range 1:50-1:500)

SR-2C (C-20) is also recommended for detection of serotonin 2C receptor (5-HT_{2C}) in additional species, including equine, canine, bovine and porcine.

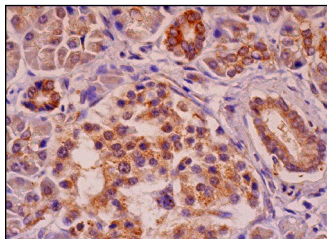
Suitable for use as control antibody for SR-2C siRNA (h): sc-42235, SR-2C siRNA (m): sc-42236, SR-2C shRNA Plasmid (h): sc-42235-SH, SR-2C shRNA Plasmid (m): sc-42236-SH, SR-2C shRNA (h) Lentiviral Particles: sc-42235-V and SR-2C shRNA (m) Lentiviral Particles: sc-42236-V.

Molecular Weight of endogenous SR-2C: 48 kDa.

Molecular Weight of glycosylated SR-2C: 63 kDa.

Positive Controls: mouse brain extract: sc-2253 or rat brain extract: sc-2392 or SK-N-MC cell lysate: sc-2237.

DATA



SR-2C (C-20): sc-1464. Immunoperoxidase staining of formalin fixed, paraffin-embedded human pancreas tissue showing cytoplasmic staining of exocrine glandular cells, Islets of Langerhans and pancreatic duct cells.

SELECT PRODUCT CITATIONS

1. Anastasio, N.C., et al. 2010. Serotonin 5-HT_{2C} receptor protein expression is enriched in synaptosomal and post-synaptic compartments of rat cortex. *J. Neurochem.* 113: 1504-1515.

RESEARCH USE

For research use only, not for use in diagnostic procedures.

MONOS
Satisfaction
Guaranteed

Try **SR-2C (D-12): sc-17797**, our highly recommended monoclonal alternative to SR-2C (C-20). Also, for AC, HRP, FITC, PE, Alexa Fluor[®] 488 and Alexa Fluor[®] 647 conjugates, see **SR-2C (D-12): sc-17797**.