

Smurf2 (P-18): sc-14911

BACKGROUND

Smurf1 and Smurf2 (Smad ubiquitination regulatory factor 1 and 2) are members of the Hect family of proteins, which also includes the ubiquitin (Ub) E3-type ligases NEDD3 and E6-AP. E3 ligases are involved in the enzymatic reactions of the Ub conjugating pathway, which targets proteins for degradation by the 26S proteasome. Within the Ub pathway, the E3 ligases specifically catalyze the transfer of Ub from the Ub-conjugating enzymes to the individual protein substrate. As an E3 ligase, Smurf1 selectively interacts with receptor-regulated Smads specific to the BMP pathway in order to trigger their ubiquitination and degradation. Smurf2 interacts with receptor-activated Smads (R-Smads), including Smad1, Smad2 and Smad3, but not Smad4. Although Smurf2 localizes to the nucleus, binding to Smad7 induces its export and its recruitment to the activated TGF β receptor, where it causes degradation of Smad7.

CHROMOSOMAL LOCATION

Genetic locus: SMURF2 (human) mapping to 17q23.3; Smurf2 (mouse) mapping to 11 E1.

SOURCE

Smurf2 (P-18) is an affinity purified goat polyclonal antibody raised against a peptide mapping within an internal region of Smurf2 of human origin.

PRODUCT

Each vial contains 200 μ g IgG in 1.0 ml of PBS with < 0.1% sodium azide and 0.1% gelatin.

Blocking peptide available for competition studies, sc-14911 P, (100 μ g peptide in 0.5 ml PBS containing < 0.1% sodium azide and 0.2% BSA).

RESEARCH USE

For research use only, not for use in diagnostic procedures.

APPLICATIONS

Smurf2 (P-18) is recommended for detection of Smurf2 of mouse and human origin by Western Blotting (starting dilution 1:200, dilution range 1:100-1:1000), immunoprecipitation [1-2 μ g per 100-500 μ g of total protein (1 ml of cell lysate)], immunofluorescence (starting dilution 1:50, dilution range 1:50-1:500), immunohistochemistry (including paraffin-embedded sections) (starting dilution 1:50, dilution range 1:50-1:500) and solid phase ELISA (starting dilution 1:30, dilution range 1:30-1:3000).

Smurf2 (P-18) is also recommended for detection of Smurf2 in additional species, including canine, bovine, porcine and avian.

Suitable for use as control antibody for Smurf2 siRNA (h): sc-41675, Smurf2 siRNA (m): sc-41676, Smurf2 shRNA Plasmid (h): sc-41675-SH, Smurf2 shRNA Plasmid (m): sc-41676-SH, Smurf2 shRNA (h) Lentiviral Particles: sc-41675-V and Smurf2 shRNA (m) Lentiviral Particles: sc-41676-V.

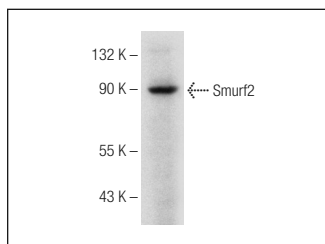
Molecular Weight of Smurf2: 86 kDa.

Positive Controls: WI-38 whole cell lysate: sc-364260, mouse brain extract: sc-2253 or mouse kidney tissue extract: sc-2255.

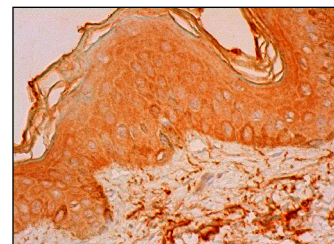
RECOMMENDED SECONDARY REAGENTS

To ensure optimal results, the following support (secondary) reagents are recommended: 1) Western Blotting: use donkey anti-goat IgG-HRP: sc-2020 (dilution range: 1:2000-1:100,000) or Cruz Marker™ compatible donkey anti-goat IgG-HRP: sc-2033 (dilution range: 1:2000-1:5000), Cruz Marker™ Molecular Weight Standards: sc-2035, TBS Blotto A Blocking Reagent: sc-2333 and Western Blotting Luminol Reagent: sc-2048. 2) Immunoprecipitation: use Protein A/G PLUS-Agarose: sc-2003 (0.5 ml agarose/2.0 ml). 3) Immunofluorescence: use donkey anti-goat IgG-FITC: sc-2024 (dilution range: 1:100-1:400) or donkey anti-goat IgG-TR: sc-2783 (dilution range: 1:100-1:400) with UltraCruz™ Mounting Medium: sc-24941. 4) Immunohistochemistry: use ImmunoCruz™: sc-2053 or ABC: sc-2023 goat IgG Staining Systems.

DATA



Smurf2 (P-18): sc-14911. Western blot analysis of Smurf2 expression in mouse brain tissue extract.



Smurf2 (P-18): sc-14911. Immunoperoxidase staining of formalin fixed, paraffin-embedded human skin tissue showing cytoplasmic staining of keratinocytes, fibroblasts, Langerhans cells and melanocytes.

SELECT PRODUCT CITATIONS

1. Fukasawa, H., et al. 2004. Down-regulation of Smad7 expression by ubiquitin-dependent degradation contributes to renal fibrosis in obstructive nephropathy in mice. *Proc. Natl. Acad. Sci. USA* 101: 8687-8692.

STORAGE

Store at 4° C, ****DO NOT FREEZE****. Stable for one year from the date of shipment. Non-hazardous. No MSDS required.

PROTOCOLS

See our web site at www.scbt.com or our catalog for detailed protocols and support products.



Try **Smurf2 (D-5): sc-393848**, our highly recommended monoclonal alternative to Smurf2 (P-18).