

sMtCK (N-20): sc-15167



The Power to Question

BACKGROUND

Creatine kinases (CK) are a large family of isoenzymes that regulate levels of ATP in subcellular compartments, where they provide ATP at sites of fluctuating energy demand by the transfer of phosphates between creatine and adenine nucleotides. CKs provide the energy of phosphate hydrolysis necessary to drive the normal function of many cellular systems including muscle, electrocytes, retina photoreceptor cells, brain cells, kidney, salt glands, myometrium, placenta, pancreas, thymus, thyroid, intestinal epithelial cells, endothelial cells, cartilage and bone cells, macrophages, blood platelets, tumor and cancer cells. Human cytoplasmic CK-Brain (CK-B, BCK) is a 381 amino acid, brain tissue specific isoform of CK. Human cytoplasmic CK-Muscle (CK-M, MCK) is a muscle tissue specific isoform of CK. Human cytoplasmic CK-Mitochondrial (MtCK, Mi-CK) is a 416 amino acid mitochondrial specific isoform of CK. Cytosolic CKs are important in the energetic regulation of Ca²⁺-pumps and in the maintenance of Ca²⁺-homeostasis.

REFERENCES

1. Mariman, E.C., et al. 1987. Structure and expression of the human creatine kinase B gene. *Genomics* 1: 126-137.
2. Nigro, J.M., et al. 1987. cDNA cloning and mapping of the human creatine kinase M gene to 19q13. *Am. J. Hum. Genet.* 40: 115-125.
3. Mariman, E.C., et al. 1989. Complete nucleotide sequence of the human creatine kinase B gene. *Nucleic Acids Res.* 17: 6385.
4. Haas, R. C., et al. 1989. Isolation and characterization of the gene and cDNA encoding human mitochondrial creatine kinase. *J. Biol. Chem.* 264: 2890-2897.
5. Wallimann, T., et al. 1994. Creatine kinase in non-muscle tissues and cells. *Mol. Cell. Biochem.* 133-134: 193-220.
6. Wallimann, T., et al. 1998. Some new aspects of creatine kinase (CK): compartmentation, structure, function and regulation for cellular and mitochondrial bioenergetics and physiology. *Biofactors* 8: 229-234.

CHROMOSOMAL LOCATION

Genetic locus: CKMT2 (human) mapping to 5q14.1; Ckmt2 (mouse) mapping to 13 C3.

SOURCE

sMtCK (N-20) is an affinity purified goat polyclonal antibody raised against a peptide mapping within an internal region of sMtCK of human origin.

PRODUCT

Each vial contains 200 µg IgG in 1.0 ml of PBS with < 0.1% sodium azide and 0.1% gelatin.

Blocking peptide available for competition studies, sc-15167 P, (100 µg peptide in 0.5 ml PBS containing < 0.1% sodium azide and 0.2% BSA).

STORAGE

Store at 4° C, ****DO NOT FREEZE****. Stable for one year from the date of shipment. Non-hazardous. No MSDS required.

APPLICATIONS

sMtCK (N-20) is recommended for detection of sMtCK of human and, to a lesser extent, mouse and rat origin by Western Blotting (starting dilution 1:200, dilution range 1:100-1:1000), immunoprecipitation [1-2 µg per 100-500 µg of total protein (1 ml of cell lysate)], immunofluorescence (starting dilution 1:50, dilution range 1:50-1:500) and solid phase ELISA (starting dilution 1:30, dilution range 1:30-1:3000).

sMtCK (N-20) is also recommended for detection of sMtCK in additional species, including equine, canine, bovine and porcine.

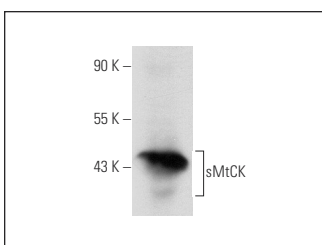
Suitable for use as control antibody for sMtCK siRNA (h): sc-38969, sMtCK siRNA (m): sc-38970, sMtCK shRNA Plasmid (h): sc-38969-SH, sMtCK shRNA Plasmid (m): sc-38970-SH, sMtCK shRNA (h) Lentiviral Particles: sc-38969-V and sMtCK shRNA (m) Lentiviral Particles: sc-38970-V.

Molecular Weight of sMtCK: 52 kDa.

RECOMMENDED SECONDARY REAGENTS

To ensure optimal results, the following support (secondary) reagents are recommended: 1) Western Blotting: use donkey anti-goat IgG-HRP: sc-2020 (dilution range: 1:2000-1:100,000) or Cruz Marker™ compatible donkey anti-goat IgG-HRP: sc-2033 (dilution range: 1:2000-1:5000), Cruz Marker™ Molecular Weight Standards: sc-2035, TBS Blotto A Blocking Reagent: sc-2333 and Western Blotting Luminol Reagent: sc-2048. 2) Immunoprecipitation: use Protein A/G PLUS-Agarose: sc-2003 (0.5 ml agarose/2.0 ml). 3) Immunofluorescence: use donkey anti-goat IgG-FITC: sc-2024 (dilution range: 1:100-1:400) or donkey anti-goat IgG-TR: sc-2783 (dilution range: 1:100-1:400) with UltraCruz™ Mounting Medium: sc-24941.

DATA



sMtCK (N-20): sc-15167. Western blot analysis of sMtCK expression in rat skeletal muscle tissue extract.

RESEARCH USE

For research use only, not for use in diagnostic procedures.

PROTOCOLS

See our web site at www.scbt.com or our catalog for detailed protocols and support products.