

# L-Selectin (H-149): sc-15331

## BACKGROUND

Selectins, also designated CD62 antigens, comprise a family of carbohydrate-binding proteins involved in mediating cellular interactions with leukocytes. L-Selectin (also designated LECAM-1 or CD62L) is expressed on the majority of B and naive T cells and on most monocytes, neutrophils and eosinophils. L-Selectin interacts with specific carbohydrates expressed by activated endothelial cells. P-Selectin (also designated GMP-140 or CD62P), expressed on activated platelets and endothelial cells, and E-Selectin (also designated ELMA-1 or CD62E), expressed on endothelial cells, exhibit overlapping ligand specificities. Both recognize sialyl-Le<sup>x</sup> as a ligand and bind to specific carbohydrates on neutrophils and monocytes.

## REFERENCES

1. Varki, A. 1994. Selectin ligands. *Proc. Natl. Acad. Sci. USA* 91: 7390-7397.
2. Tedder, T.F., et al. 1995. The Selectins: vascular adhesion molecules. *FASEB J.* 10: 866-873.
3. Lasky, L.A. 1995. Selectin-carbohydrate interactions and the initiation of the inflammatory response. *Annu. Rev. Biochem.* 64: 113-139.
4. Pavalko, R.M., et al. 1995. The cytoplasmic domain of L-Selectin interacts with cytoskeletal proteins via  $\alpha$ -actinin: receptor positioning in microvilli does not require interaction with  $\alpha$ -actinin. *J. Cell Biol.* 129: 1155-1164.

## CHROMOSOMAL LOCATION

Genetic locus: SELL (human) mapping to 1q24.2; Sell (mouse) mapping to 1 H2.2.

## SOURCE

L-Selectin (H-149) is a rabbit polyclonal antibody raised against amino acids 224-372 mapping at the C-terminus of L-Selectin of human origin.

## PRODUCT

Each vial contains 200  $\mu$ g IgG in 1.0 ml of PBS with < 0.1% sodium azide and 0.1% gelatin.

## APPLICATIONS

L-Selectin (H-149) is recommended for detection of L-Selectin of mouse, rat and human origin by Western Blotting (starting dilution 1:200, dilution range 1:100-1:1000), immunoprecipitation [1-2  $\mu$ g per 100-500  $\mu$ g of total protein (1 ml of cell lysate)], immunofluorescence (starting dilution 1:50, dilution range 1:50-1:500) and solid phase ELISA (starting dilution 1:30, dilution range 1:30-1:3000).

Suitable for use as control antibody for L-Selectin siRNA (h): sc-35770, L-Selectin siRNA (m): sc-35771, L-Selectin shRNA Plasmid (h): sc-35770-SH, L-Selectin shRNA Plasmid (m): sc-35771-SH, L-Selectin shRNA (h) Lentiviral Particles: sc-35770-V and L-Selectin shRNA (m) Lentiviral Particles: sc-35771-V.

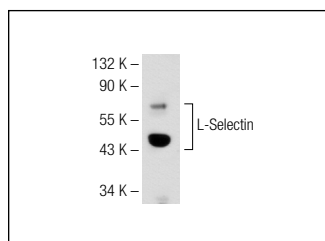
Molecular Weight of L-Selectin: 81 kDa.

Positive Controls: Jurkat whole cell lysate: sc-2204 or mouse heart extract: sc-2254.

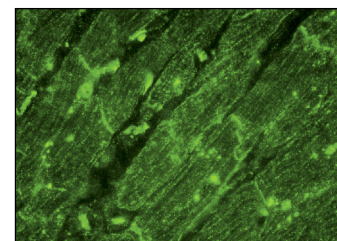
## RECOMMENDED SECONDARY REAGENTS

To ensure optimal results, the following support (secondary) reagents are recommended: 1) Western Blotting: use goat anti-rabbit IgG-HRP: sc-2004 (dilution range: 1:2000-1:100,000) or Cruz Marker<sup>™</sup> compatible goat anti-rabbit IgG-HRP: sc-2030 (dilution range: 1:2000-1:5000), Cruz Marker<sup>™</sup> Molecular Weight Standards: sc-2035, TBS Blotto A Blocking Reagent: sc-2333 and Western Blotting Luminol Reagent: sc-2048. 2) Immunoprecipitation: use Protein A/G PLUS-Agarose: sc-2003 (0.5 ml agarose/2.0 ml). 3) Immunofluorescence: use goat anti-rabbit IgG-FITC: sc-2012 (dilution range: 1:100-1:400) or goat anti-rabbit IgG-TR: sc-2780 (dilution range: 1:100-1:400) with UltraCruz<sup>™</sup> Mounting Medium: sc-24941.

## DATA



L-Selectin (H-149): sc-15331. Western blot analysis of L-Selectin expression in Jurkat whole cell lysate.



L-Selectin (H-149): sc-15331. Immunofluorescence staining of normal mouse heart frozen section showing membrane and cytoplasmic staining.

## SELECT PRODUCT CITATIONS

1. Kao, T.J., et al. 2007. L-type voltage-operated Ca<sup>2+</sup> channels modulate transient Ca<sup>2+</sup> influx triggered by activation of Sertoli cell surface L-Selectin. *J. Cell. Biochem.* 101: 1023-1037.
2. Ahrens, I., et al. 2008. Selenium supplementation induces metalloproteinase-dependent L-Selectin shedding from monocytes. *J. Leukoc. Biol.* 83: 1388-1395.

## STORAGE

Store at 4° C, \*\*DO NOT FREEZE\*\*. Stable for one year from the date of shipment. Non-hazardous. No MSDS required.

## RESEARCH USE

For research use only, not for use in diagnostic procedures.

## PROTOCOLS

See our web site at [www.scbt.com](http://www.scbt.com) or our catalog for detailed protocols and support products.



Try **L-Selectin (B-8): sc-390756** or **L-Selectin (Iam1-116): sc-13505**, our highly recommended monoclonal alternatives to L-Selectin (H-149).