

# δ Tubulin (H-300): sc-15372

## BACKGROUND

Tubulin is a major cytoskeleton component that has five distinct forms, designated  $\alpha$ ,  $\beta$ ,  $\gamma$ ,  $\delta$  and  $\epsilon$  Tubulin.  $\alpha$  and  $\beta$  Tubulins form heterodimers which multimerize to form a microtubule filament. Multiple  $\beta$  Tubulin isoforms ( $\beta 1$ ,  $\beta 2$ ,  $\beta 3$ ,  $\beta 4$ ,  $\beta 5$ ,  $\beta 6$  and  $\beta 8$ ) have been characterized and are expressed in mammalian tissues.  $\beta 1$  and  $\beta 4$  are present throughout the cytosol,  $\beta 2$  is present in the nuclei and nucleoplasm, and  $\beta 3$  is a neuron-specific cytoskeletal protein.  $\gamma$  Tubulin forms the gammasome, which is required for nucleating microtubule filaments at the centrosome. Both  $\delta$  Tubulin and  $\epsilon$  Tubulin are associated with the centrosome.  $\delta$  Tubulin is a homolog of the *Chlamydomonas*  $\delta$  Tubulin Uni3 and is found in association with the centrioles, whereas  $\epsilon$  Tubulin localizes to the pericentriolar material.  $\epsilon$  Tubulin exhibits a cell-cycle-specific pattern of localization, first associating with only the older of the centrosomes in a newly duplicated pair and later associating with both centrosomes.

## REFERENCES

- Weisenberg, R. 1981. Invited review: the role of nucleotide triphosphate in actin and tubulin assembly and function. *Cell Motil.* 1: 485-497.
- Zheng, Y., Jung, M.K. and Oakley, B.R. 1991.  $\gamma$ -Tubulin is present in *Drosophila melanogaster* and *Homo sapiens* and is associated with the centrosome. *Cell* 65: 817-823.
- Burns, R.G. 1991.  $\alpha$ -,  $\beta$ -, and  $\gamma$ -tubulins: sequence comparisons and structural constraints. *Cell Motil. Cytoskeleton* 20: 181-189.
- Leask, A. and Stearns, T. 1998. Expression of amino- and carboxyl-terminal  $\gamma$ - and  $\alpha$ -tubulin mutants in cultured epithelial cells. *J. Biol. Chem.* 273: 2661-2668.
- Ludueno, R.F. 1998. Multiple forms of tubulin: different gene products and covalent modifications. *Int. Rev. Cytol.* 178: 207-275.
- Walss, C., Kreisberg, J.I. and Ludueno, R.F. 1999. Presence of the  $\beta$ II isotype of Tubulin in the nuclei of cultured mesangial cells from rat kidney. *Cell Motil. Cytoskeleton* 42: 274-284.
- Modig, C., Olsson, P.E., Barasoain, I., de Ines, C., Andreu, J.M., Roach, M.C., Ludueno, R.F. and Wallin, M. 1999. Identification of  $\beta 3$ - and  $\beta 4$ -tubulin isotypes in cold-adapted microtubules from Atlantic cod (*Gadus morhua*): antibody mapping and cDNA sequencing. *Cell Motil. Cytoskeleton* 42: 315-330.
- Woulfe, J. and Munoz, D. 2000. Tubulin immunoreactive neuronal intranuclear inclusions in the human brain. *Neuropathol. Appl. Neurobiol.* 26: 161-171.
- Chang, P. and Stearns, T. 2000.  $\delta$ -tubulin and  $\epsilon$ -tubulin: two new human centrosomal tubulins reveal new aspects of centrosome structure and function. *Nat. Cell Biol.* 2: 30-35.

## CHROMOSOMAL LOCATION

Genetic locus: TUBD1 (human) mapping to 17q23.1; Tubd1 (mouse) mapping to 11 C.

## SOURCE

$\delta$  Tubulin (H-300) is a rabbit polyclonal antibody raised against amino acids 154-450 of  $\delta$  Tubulin of human origin.

## PRODUCT

Each vial contains 200  $\mu$ g IgG in 1.0 ml of PBS with < 0.1% sodium azide and 0.1% gelatin.

## APPLICATIONS

$\delta$  Tubulin (H-300) is recommended for detection of  $\delta$  Tubulin of mouse, rat and human origin by Western Blotting (starting dilution 1:200, dilution range 1:100-1:1000), immunoprecipitation [1-2  $\mu$ g per 100-500  $\mu$ g of total protein (1 ml of cell lysate)], immunofluorescence (starting dilution 1:50, dilution range 1:50-1:500) and solid phase ELISA (starting dilution 1:30, dilution range 1:30-1:3000).

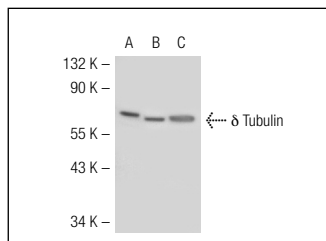
$\delta$  Tubulin (H-300) is also recommended for detection of  $\delta$  Tubulin in additional species, including equine, canine, bovine and porcine.

Suitable for use as control antibody for  $\delta$  Tubulin siRNA (h): sc-35157,  $\delta$  Tubulin siRNA (m): sc-35158,  $\delta$  Tubulin shRNA Plasmid (h): sc-35157-SH,  $\delta$  Tubulin shRNA Plasmid (m): sc-35158-SH,  $\delta$  Tubulin shRNA (h) Lentiviral Particles: sc-35157-V and  $\delta$  Tubulin shRNA (m) Lentiviral Particles: sc-35158-V.

Molecular Weight of  $\delta$  Tubulin: 51 kDa.

Positive Controls:  $\delta$  Tubulin (m): 293T Lysate: sc-126164, K-562 whole cell lysate: sc-2203 or NIH/3T3 whole cell lysate: sc-2210.

## DATA



$\delta$  Tubulin (H-300): sc-15372. Western blot analysis of  $\delta$  Tubulin expression in non-transfected 293T: sc-117752 (A), mouse  $\delta$  Tubulin transfected 293T: sc-126164 (B) and NIH/3T3 (C) whole cell lysates.

## STORAGE

Store at 4° C, \*\*DO NOT FREEZE\*\*. Stable for one year from the date of shipment. Non-hazardous. No MSDS required.

## RESEARCH USE

For research use only, not for use in diagnostic procedures.

## PROTOCOLS

See our web site at [www.scbt.com](http://www.scbt.com) or our catalog for detailed protocols and support products.