

# HtrA2 (V-17): sc-15467

## BACKGROUND

The human homolog of the *E. Coli* htrA gene product HtrA is identified in osteoarthritic cartilage and is repressed in SV40-transformed fibroblast. The gene encoding HtrA protein is highly conserved among mammalian species and belongs to the serine protease family. The HtrA protein contains an IGF-binding domain and exhibits endoproteolytic activity, including autocatalytic cleavage. HtrA is a secreted protein that is expressed in heterologous systems. HtrA plays a role in the degradation of denatured proteins and cell growth regulation. Human HtrA2 (also designated Omi) is a novel member of the HtrA serine protease family and is highly homologous to HtrA (also known as L56 and HtrA1). HtrA2 is ubiquitously expressed nuclear protease that is capable of autoproteolysis. The HtrA2 protein exists as two polypeptides and as an alternatively spliced form called D-Omi, which is predominately expressed in the kidney, colon and thyroid. Due to a modified PDZ domain, D-Omi does not interact with the known partner of HtrA2, the Mxi2 protein. Like HtrA, HtrA2 is involved in the degradation aberrantly folded proteins during conditions of cellular stress, suggesting that it may possess a chaperone-like role under normal conditions.

## CHROMOSOMAL LOCATION

Genetic locus: HTRA2 (human) mapping to 2p13.1; Htra2 (mouse) mapping to 6 C3.

## SOURCE

HtrA2 (V-17) is an affinity purified goat polyclonal antibody raised against a peptide mapping near the C-terminus of HtrA2 of human origin.

## PRODUCT

Each vial contains 200 µg IgG in 1.0 ml of PBS with < 0.1% sodium azide and 0.1% gelatin.

Blocking peptide available for competition studies, sc-15467 P, (100 µg peptide in 0.5 ml PBS containing < 0.1% sodium azide and 0.2% BSA).

## APPLICATIONS

HtrA2 (V-17) is recommended for detection of HtrA2 of mouse, rat and human origin by Western Blotting (starting dilution 1:200, dilution range 1:100-1:1000), immunoprecipitation [1-2 µg per 100-500 µg of total protein (1 ml of cell lysate)], immunofluorescence (starting dilution 1:50, dilution range 1:50-1:500), immunohistochemistry (including paraffin-embedded sections) (starting dilution 1:50, dilution range 1:50-1:500) and solid phase ELISA (starting dilution 1:30, dilution range 1:30-1:3000).

HtrA2 (V-17) is also recommended for detection of HtrA2 in additional species, including equine, canine, bovine and porcine.

Suitable for use as control antibody for HtrA2 siRNA (h): sc-35615, HtrA2 siRNA (m): sc-35616, HtrA2 shRNA Plasmid (h): sc-35615-SH, HtrA2 shRNA Plasmid (m): sc-35616-SH, HtrA2 shRNA (h) Lentiviral Particles: sc-35615-V and HtrA2 shRNA (m) Lentiviral Particles: sc-35616-V.

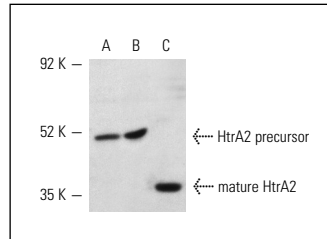
Molecular Weight of HtrA2 precursor: 50 kDa.

Molecular Weight of HtrA2 processed forms: 38/40 kDa.

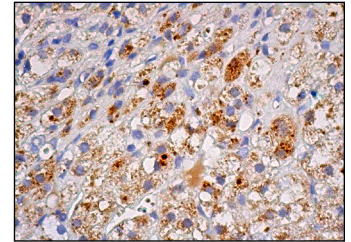
## STORAGE

Store at 4° C, **\*\*DO NOT FREEZE\*\***. Stable for one year from the date of shipment. Non-hazardous. No MSDS required.

## DATA



HtrA2 (V-17): sc-15467. Western blot analysis of HtrA2 precursor expression in mouse placenta (A) and rat placenta (B) extracts and mature HtrA2 in mouse LacZ whole cell lysate (C).



HtrA2 (V-17): sc-15467. Immunoperoxidase staining of formalin fixed, paraffin-embedded human adrenal gland tissue showing cytoplasmic staining of glandular cells.

## SELECT PRODUCT CITATIONS

- Inagaki, R., et al. 2008. Omi/HtrA2 is relevant to the selective vulnerability of striatal neurons in Huntington's disease. *Eur. J. Neurosci.* 28: 30-40.
- Hartkamp, J., et al. 2010. The Wilms' tumor suppressor protein WT1 is processed by the serine protease HtrA2/Omi. *Mol. Cell* 37: 159-171.
- Beleford, D., et al. 2010. Methylation induced gene silencing of HtrA3 in smoking-related lung cancer. *Clin. Cancer Res.* 16: 398-409.
- Dynon, K., et al. 2012. HtrA3 as an early marker for preeclampsia: specific monoclonal antibodies and sensitive high-throughput assays for serum screening. *PLoS ONE* 7: e45956.
- Greene, A.W., et al. 2012. Mitochondrial processing peptidase regulates PINK1 processing, import and Parkin recruitment. *EMBO Rep.* 13: 378-385.

## RESEARCH USE

For research use only, not for use in diagnostic procedures.

## PROTOCOLS

See our web site at [www.scbt.com](http://www.scbt.com) or our catalog for detailed protocols and support products.


 MONOS  
Satisfaction  
Guaranteed

Try **HtrA2 (E-3): sc-365594** or **HtrA2 (C-10): sc-271528**, our highly recommended monoclonal alternatives to HtrA2 (V-17).